

Supplementary Information

A Biomimetic Collagen-Apatite Scaffold with a Multi-Level Lamellar Structure for Bone Tissue Engineering

Z. Xia, M. M. Villa and M. Wei

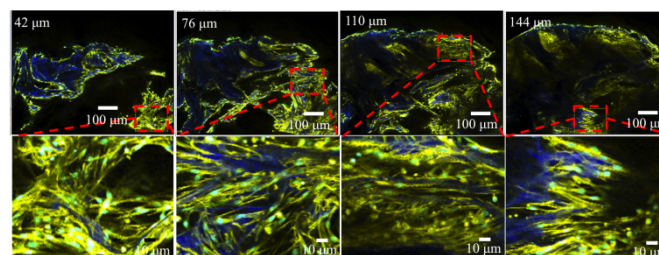


Figure S1: Two-photon z-stack through the Lamellar Scaffold after 4 days *in vitro*. As the scan moves toward central area of the scaffold from $z = 42\mu\text{m}$ to $z = 144\mu\text{m}$, cells were observed inside the scaffolds and spreading throughout the scaffolds.

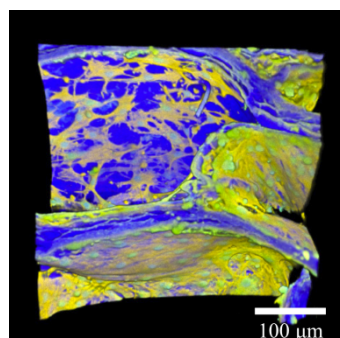


Figure S2: 3-D reconstruction of MC3T3-E1 cells on the Lamellar Scaffold after one day *in vitro*.