

Supporting information

Table S1 ^{13}C resonance assignments of ERY in chloroform and comparison with those observed for ERY mixed with different functional monomers.

Position	ERY			ERY-AA		ERY-HEMA		ERY-MAA		ERY-MMA	
	$\delta^{13}\text{C}$	$\delta^{13}\text{C}$	$\Delta\delta^{13}\text{C}$	$\delta^{13}\text{C}$	$\Delta\delta^{13}\text{C}$	$\delta^{13}\text{C}$	$\Delta\delta^{13}\text{C}$	$\delta^{13}\text{C}$	$\Delta\delta^{13}\text{C}$	$\delta^{13}\text{C}$	$\Delta\delta^{13}\text{C}$
1	176.03	176.21	0.18	176.02	-0.01	176.24	0.21	175.89	-0.14		
2	45.00	44.93	-0.07	44.89	-0.11	44.96	-0.04	44.92	-0.08		
3	80.07	80.02	-0.05	80.04	-0.03	80.38	0.31	79.98	-0.09		
4	39.54	39.38	-0.16	39.39	-0.15	39.45	-0.09	39.45	-0.09		
5	83.67	83.65	-0.02	83.69	0.02	84.81	1.14	83.57	-0.10		
6	74.77	74.76	-0.01	74.60	-0.17	74.82	0.05	74.69	-0.08		
7	38.58	38.58	0	38.45	-0.13	38.62	0.04	38.53	-0.05		
8	45.23	45.13	-0.10	45.00	-0.23	45.04	-0.19	45.15	-0.08		
9	222.09	222.07	-0.02	221.99	-0.10	222.10	0.01	221.90	-0.19		
10	37.96	37.90	-0.06	37.90	-0.06	38.07	0.11	37.91	-0.05		
11	69.05	68.94	-0.11	68.82	-0.23	69.01	-0.04	68.95	-0.10		
12	74.95	74.76	-0.19	74.73	-0.22	74.95	0	74.88	-0.07		
13	77.01	77.04	0.03	76.90	-0.11	77.16	0.15	76.91	-0.10		
14	21.19	21.08	-0.11	21.07	-0.12	21.13	-0.06	21.13	-0.06		
15	10.77	10.70	-0.07	10.64	-0.13	10.71	-0.06	10.68	-0.09		
16	16.06	16.03	-0.03	15.94	-0.12	16.10	0.04	15.98	-0.08		
17	9.24	9.20	-0.04	9.16	-0.08	9.44	0.20	9.16	-0.08		
18	26.93	26.68	-0.25	26.60	-0.33	26.72	-0.21	26.85	-0.08		
19	18.41	18.39	-0.02	18.32	-0.09	18.41	0	18.35	-0.06		
20	12.16	12.10	-0.06	12.05	-0.11	12.15	-0.01	12.06	-0.10		
21	16.29	16.28	-0.01	16.17	-0.12	16.32	0.03	16.22	-0.07		
1'	103.33	103.22	-0.11	103.21	-0.12	102.81	-0.52	103.23	-0.10		
2'	71.03	71.00	-0.03	71.02	-0.01	70.47	-0.56	70.97	-0.06		
3'	65.71	65.65	-0.06	65.58	-0.13	64.70	-1.01	65.61	-0.10		
4'	28.74	28.63	-0.11	28.82	0.08	30.74	2.00	28.66	-0.08		
5'	68.96	68.94	-0.02	68.86	-0.10	67.47	-1.49	68.89	-0.07		
6'	21.51	21.43	-0.08	21.37	-0.14	21.18	-0.33	21.43	-0.08		
7'	40.43	40.34	-0.09	40.26	-0.17	39.27	-1.16	40.28	-0.15		
8'	40.38	40.27	-0.11	40.26	-0.12	39.27	-1.11	40.28	-0.10		
1''	96.41	96.35	-0.06	96.35	-0.06	96.55	0.14	96.33	-0.08		
2''	35.04	34.98	-0.06	34.91	-0.13	35.05	0.01	34.99	-0.05		
3''	72.71	72.70	-0.01	72.60	-0.11	72.65	-0.06	72.66	-0.05		
4''	78.07	78.00	-0.07	77.94	-0.13	78.05	-0.02	78.03	-0.04		
5''	65.58	65.42	-0.16	65.29	-0.29	65.65	0.07	65.51	-0.07		
6''	18.70	18.59	-0.11	18.49	-0.21	18.55	-0.15	18.64	-0.06		
7''	21.59	21.50	-0.09	21.44	-0.15	21.39	-0.20	21.49	-0.10		
8''	49.61	49.52	-0.09	49.49	-0.12	49.44	-0.17	49.52	-0.09		

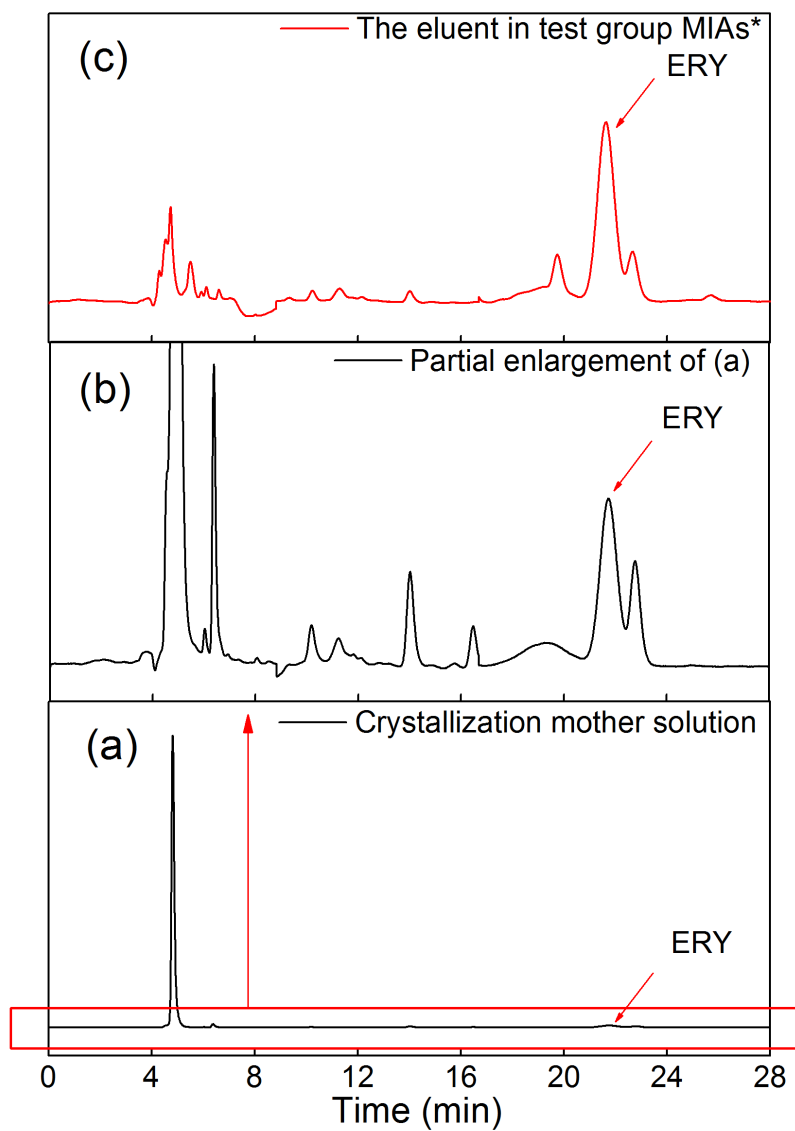


Fig. S1 HPLC chromatograms of different ERY samples.