

Supporting information

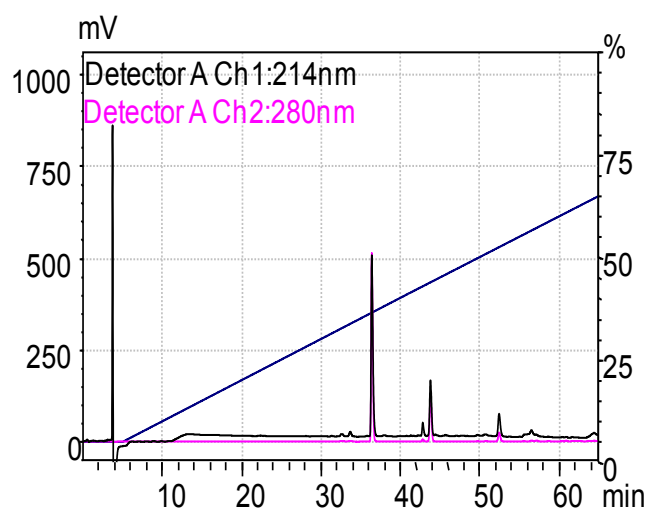
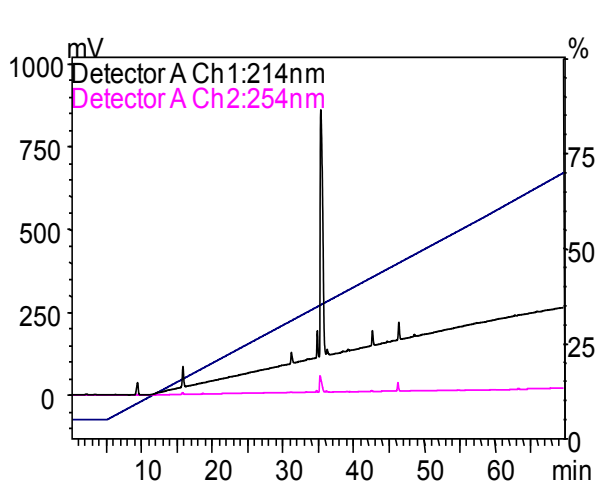
Self-assembled dipeptide nanotubes constituted by flexible β -phenylalanine and conformationally constrained α,β -dehydrophenylalanine residues as drug delivery system

Shaheena Parween^{a, 1}, Anurag Misra^{b, 1}, Suryanarayananarao Ramakumar^b, Virander Singh Chauhan^{a,*}

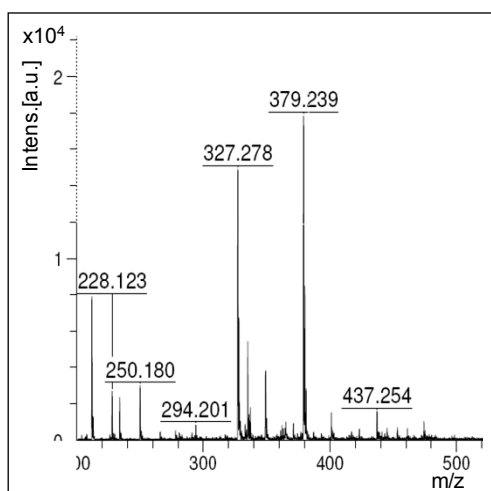
^aInternational Centre for Genetic Engineering and Biotechnology, New Delhi 110067, India

^bDepartment of Physics, Indian Institute of Science, Bangalore 560012, India

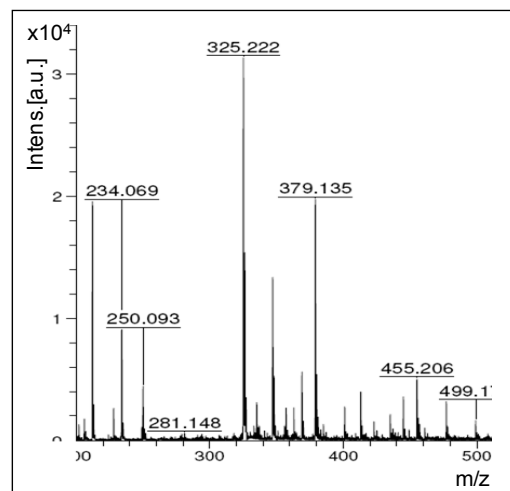
E-mail: virander@icgeb.res.in



(b)



(c)



(d)

ESI Fig. S1 RP-HPLC chromatograms of (a) β Phe-Phe (b) β Phe- Δ Phe and Mass spectra of (c) β Phe-Phe (d) β Phe- Δ Phe.