

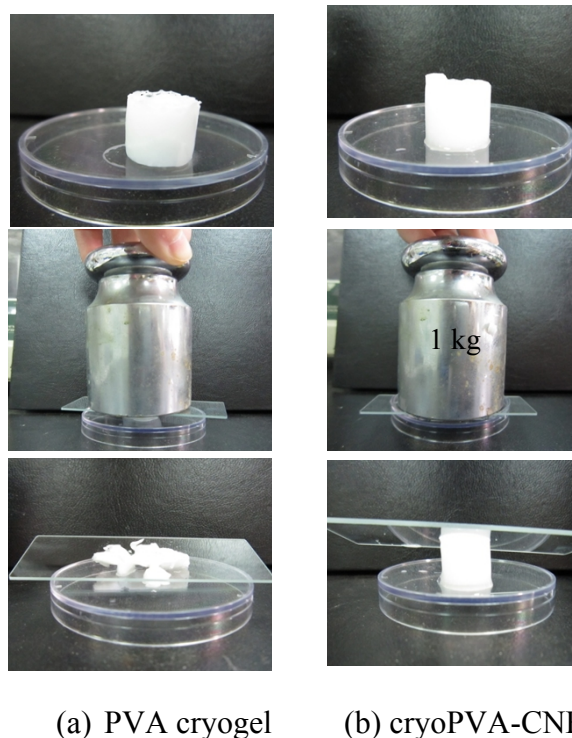
## Electronic Supplementary Information (ESI)

# Chitin nanofibrils reinforced multifunctional monolith poly(vinylalcohol) cryogel

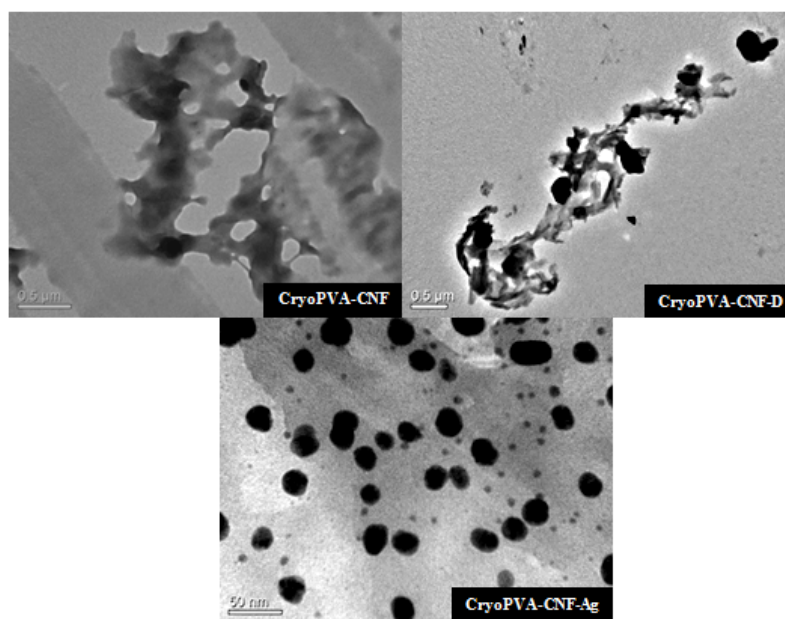
Iryanti Fatyasari Nata,<sup>a\*,b</sup> Tsai-Mao Wu<sup>b</sup>, Jung-Kung Chen<sup>b</sup> and Cheng-Kang Lee<sup>b\*</sup>

<sup>a</sup> Chemical Engineering Study Program, LambungMangkurat University,  
Jl. A. Yani Km. 36, Banjarbaru, Indonesia 70714. Fax: +62 511 4772626; Tel: :+62 511  
6807214; E-mail: [yanti\\_tkunlam@yahoo.com](mailto:yanti_tkunlam@yahoo.com)

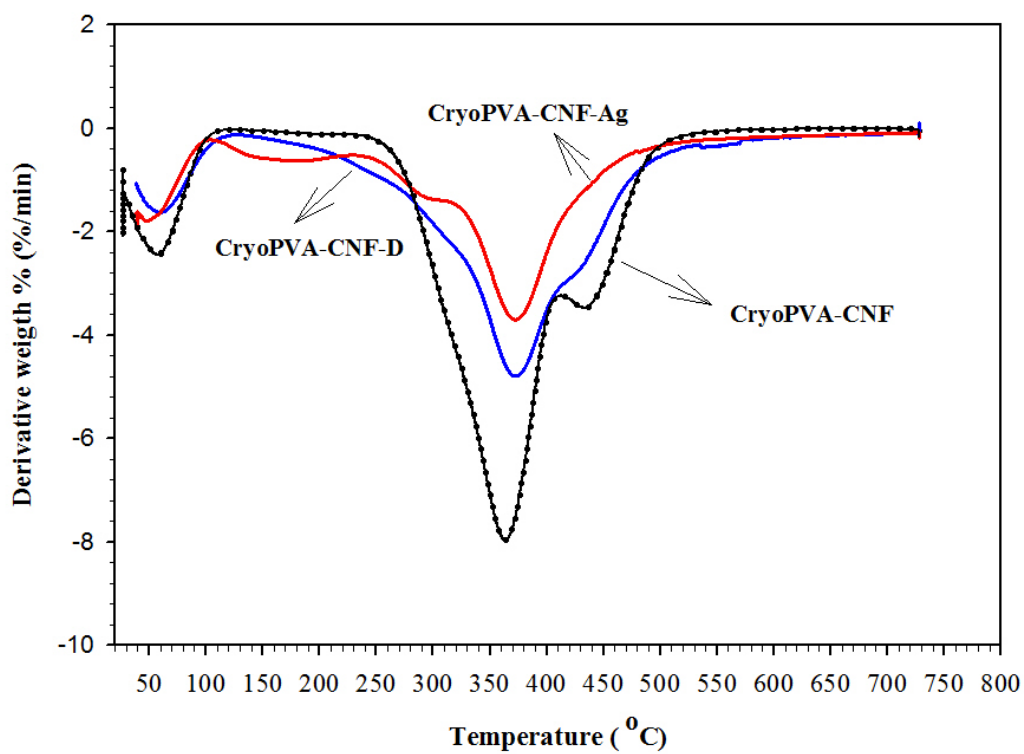
<sup>b</sup> Department of Chemical Engineering, National Taiwan University of Science and  
Technology. 43 Keelung Rd. Sec.4, Taipei, Taiwan 106. Fax: +886 2 27376644; Tel: +886 2  
27376629;  
E-mail: [cklee@mail.ntust.edu.tw](mailto:cklee@mail.ntust.edu.tw)



**Fig. S1** The compression test of the reinforcement effect of CNF in cryogel of PVA; (a) cryogel prepared by 2% PVA only; (b) cryogel prepared from 2%PVA and 2% CNF.



**Fig. S2** TEM images of cryoPVA-CNF (scale bar 0.5  $\mu\text{m}$ ), polydopamine modified cryoPVA-CNF-D (scale bar 0.5  $\mu\text{m}$ ), and Ag nanoparticles embedded cryoPVA-CNF-Ag (scale bar 50 nm).



**Fig. S3** TGA derivative curve of CryoPVA-CNF, CryoPVA-CNF-D and CryoPVA-CNF-Ag