

Supporting Information

Multifunctional star-shaped polylactic acid implant for potential use in angioplasty

Selvaraj Nagarajan,^{a,b} M S Kiran,^c John Tsibouklis^d and Boreddy Siva Rami Reddy^{*b}

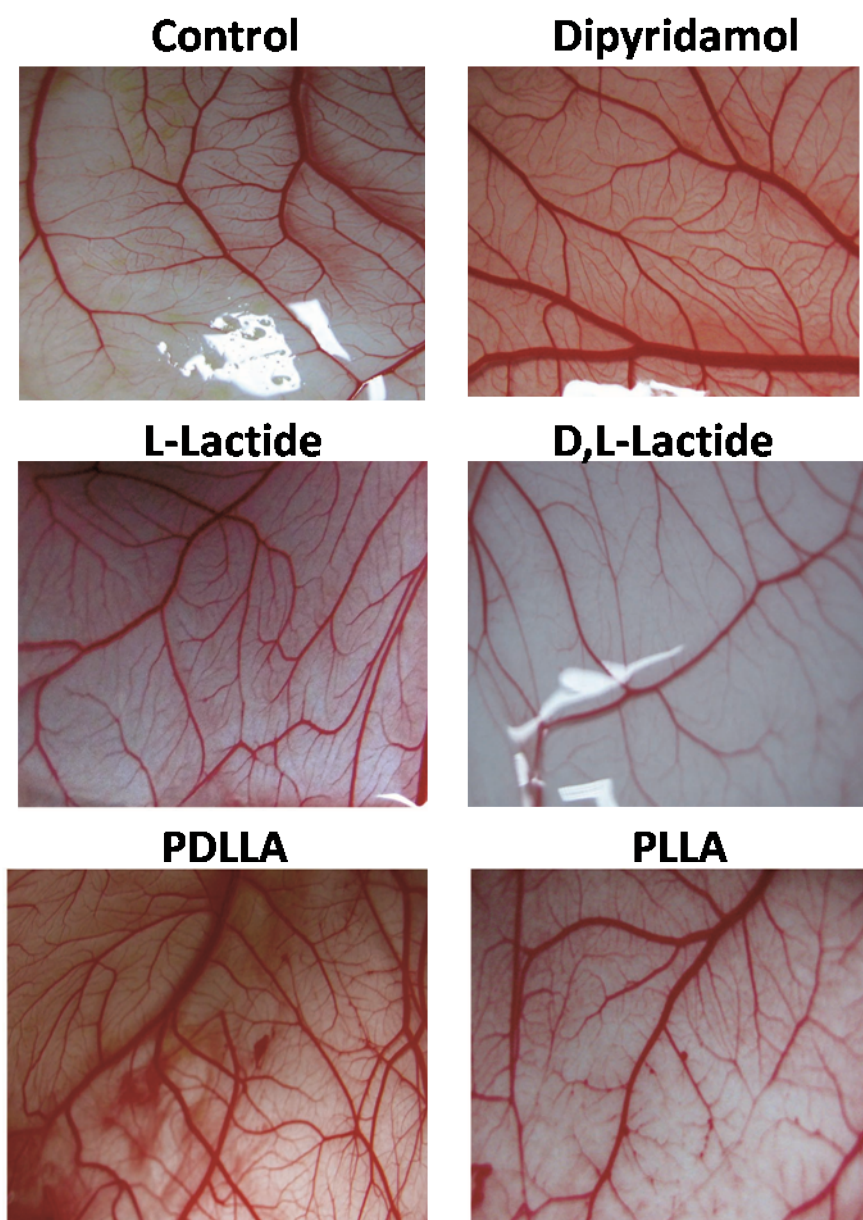


Fig.S1: Effect of PBS (Control), dipyridamole, L-lactide, D,L-lactide, PDLLA and PLLA with the branching points of 175, 240, 200, 90, 325 and 210 on CAM Assay.

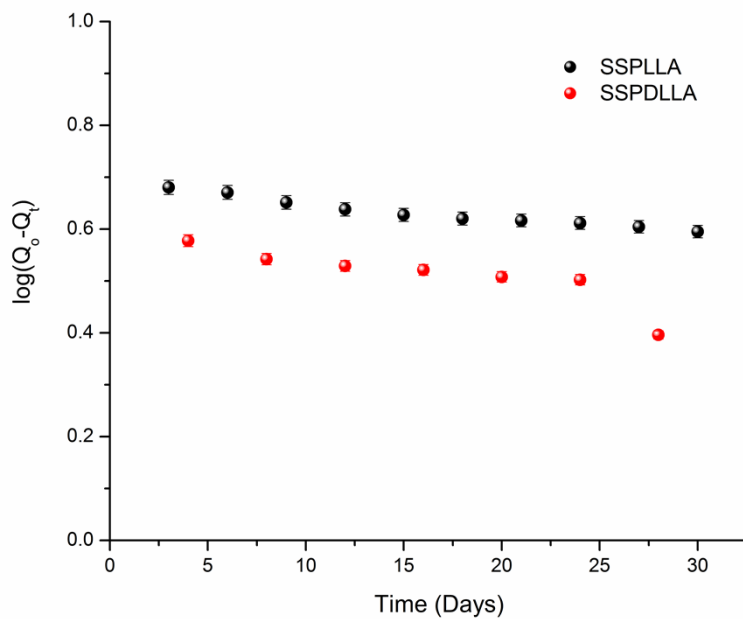


Fig.S2: First order hydrolysis plot of star shaped polylactic acids as function of time.

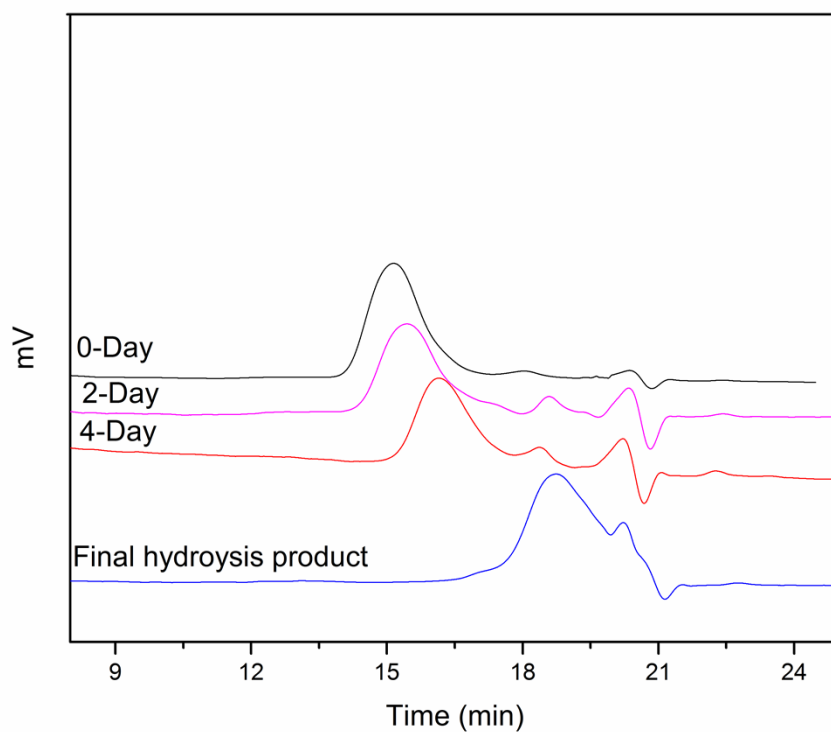


Fig.S3: Molecular weight difference of SSPDLLA on 0 day ($\bar{M}_n=32,000$; PDI=1.35), 2 day ($\bar{M}_n=24,572$; PDI=1.77), 4 day ($\bar{M}_n=17,664$; PDI=1.55), and final hydrolysis product ($\bar{M}_n = 762$).