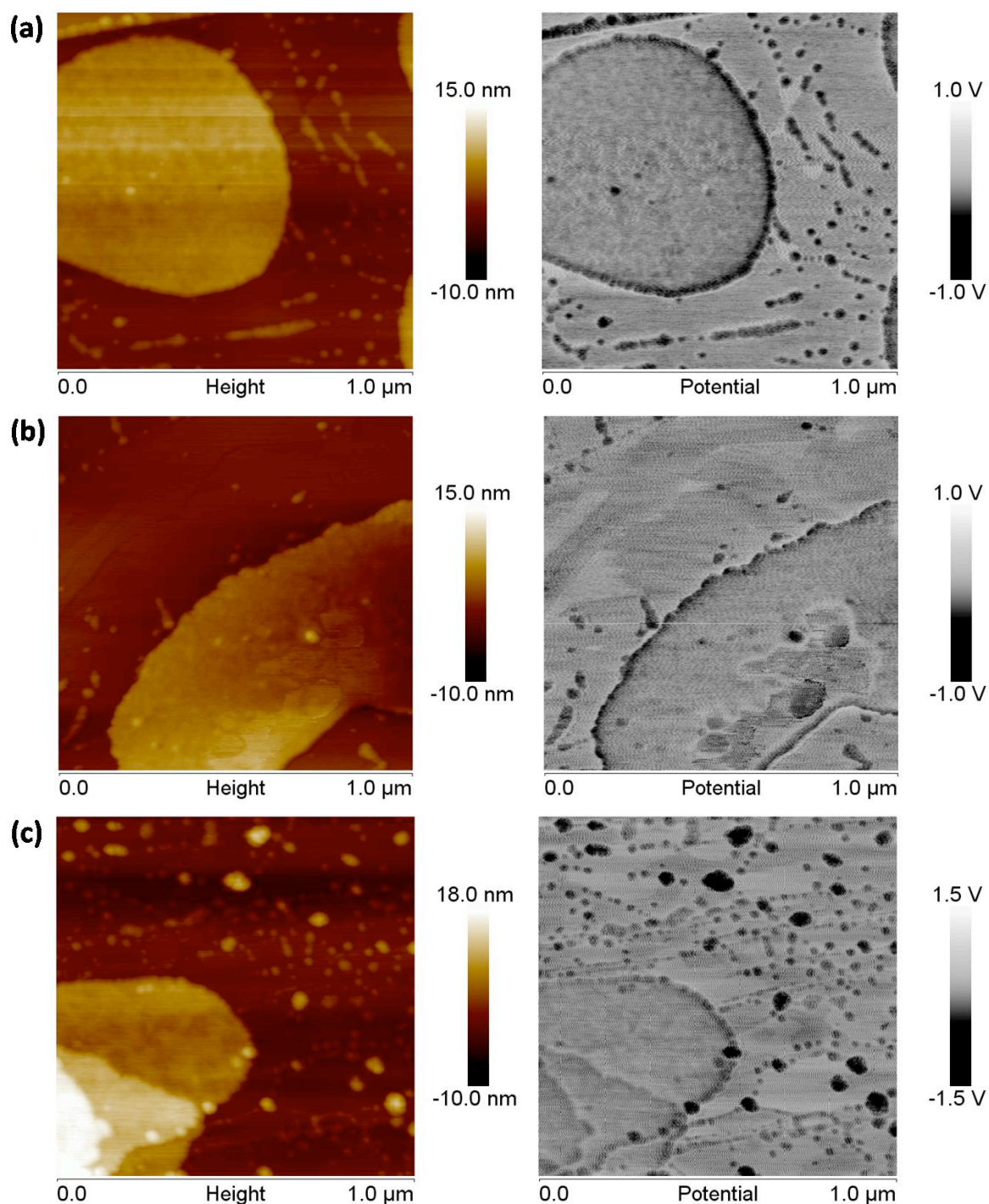


## Supplementary information

Silification experiments with PM-wildtype (0.2 eq, 0.4 eq, 0.8 eq TEOS)



**Supporting Figure S1:** a) AFM (left) and EFM (right) image of PM-WT with 0.2 eq TEOS on highly oriented pyrolytic graphite (HOPG). b) PM-WT with 0.4 eq TEOS and c) PM-WT with 0.8 eq TEOS. Negatively charged silica nanoparticles are found in the vicinity of but not on the PM-WT.