

SUPPORTING INFORMATION

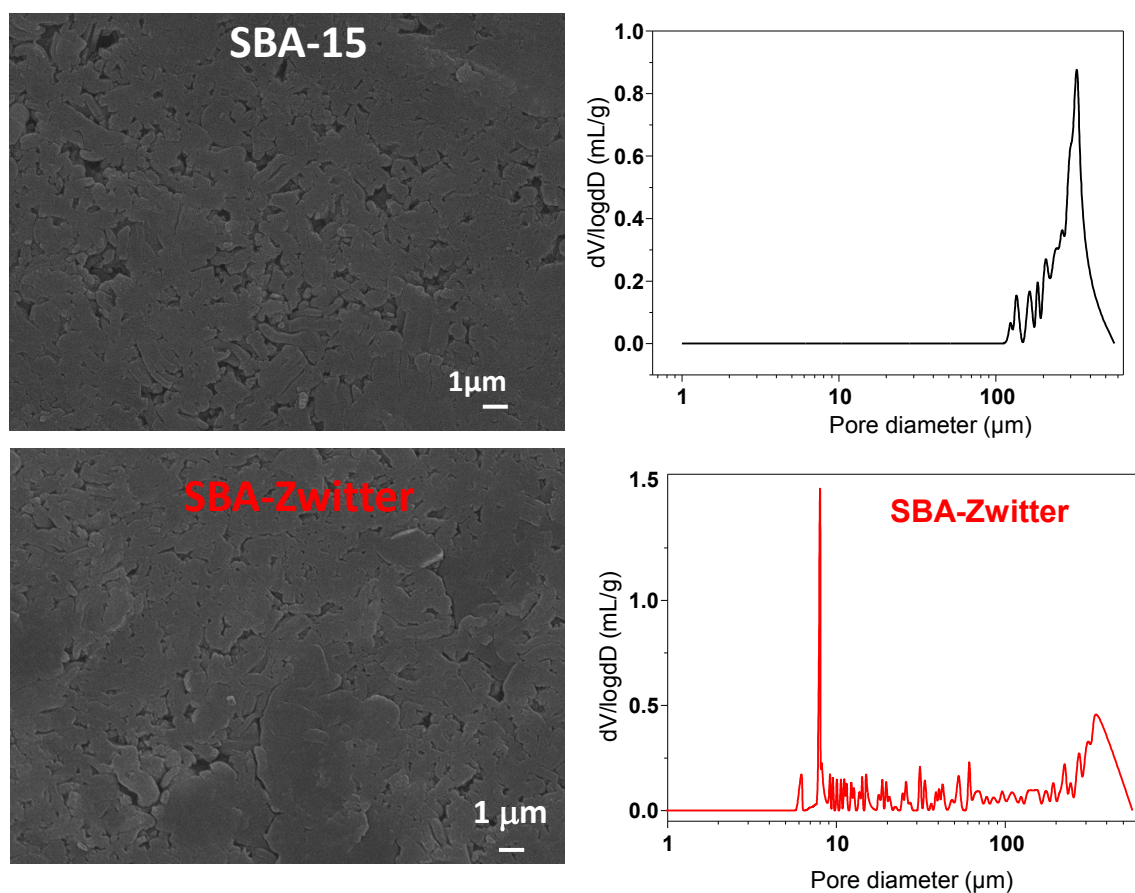


Figure S1. (A) SEM micrographs and (B) pore size distributions, determined by Hg intrusion porosimetry in the 1-600 μm range, for disk-shaped SBA-15 and SBA-Zwitter samples.

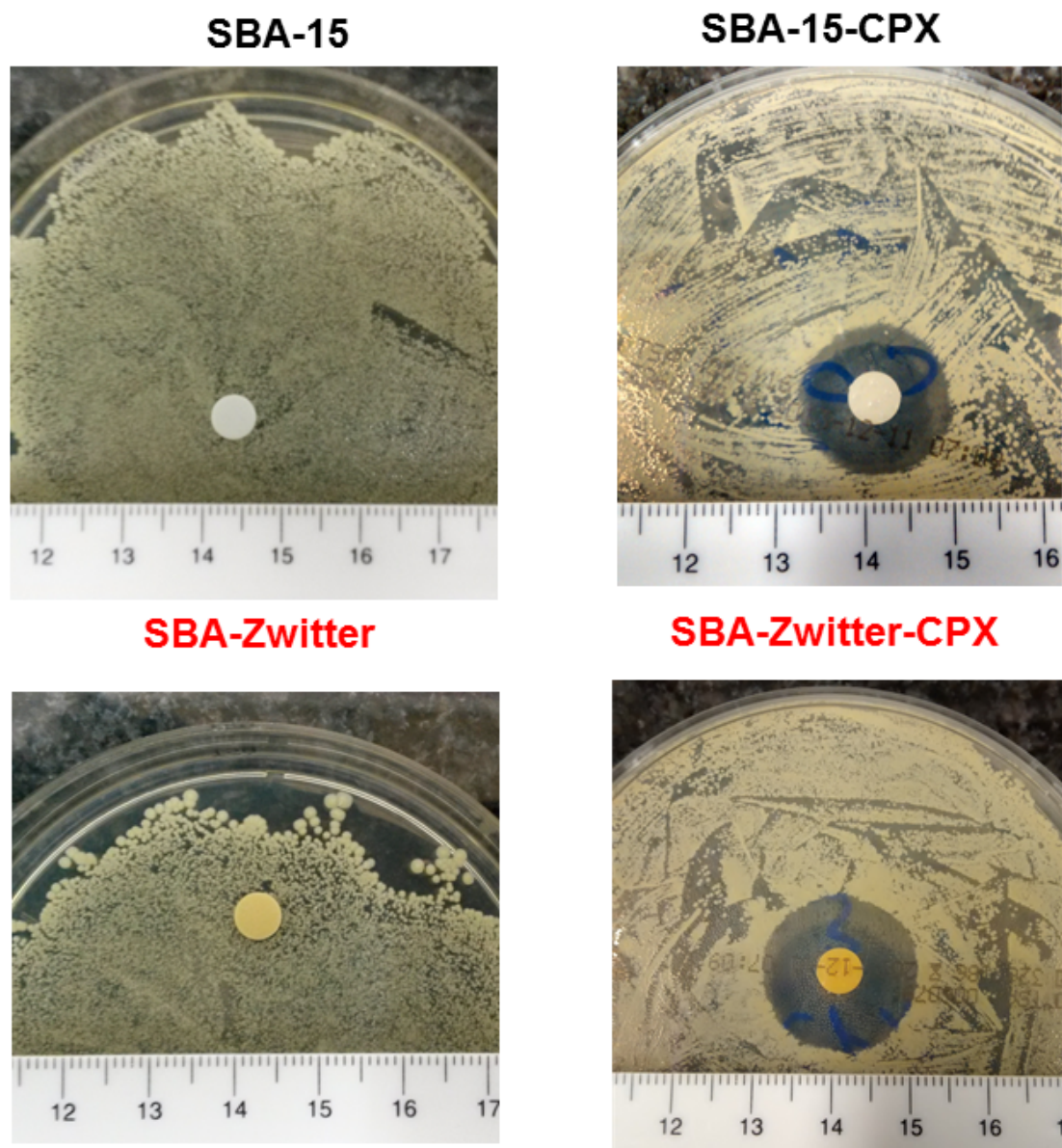


Figure S2. Digital images of agar plates after carrying out agar disk diffusion tests (ADT). Left: Cephalexin (CPX)-free SBA-15 and SBA-Zwitter disk-shaped pieces. Right: Cephalexin (CPX)-loaded SBA-15 and SBA-Zwitter materials. Inhibition zones are observed for both antibiotic loaded samples.