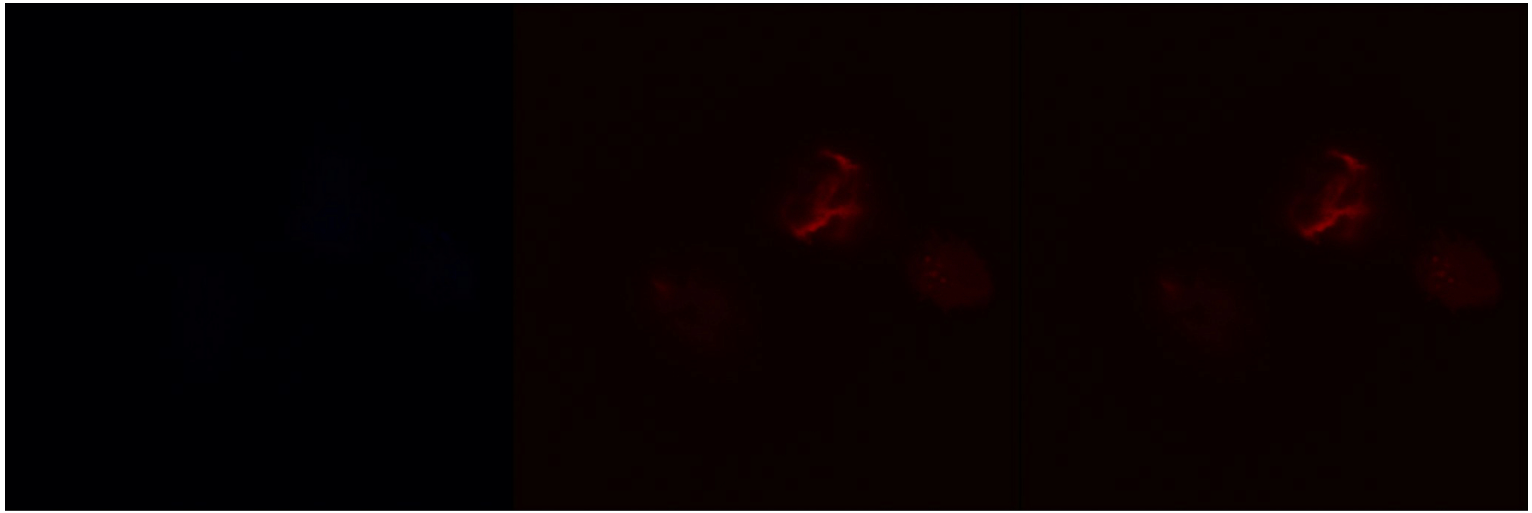
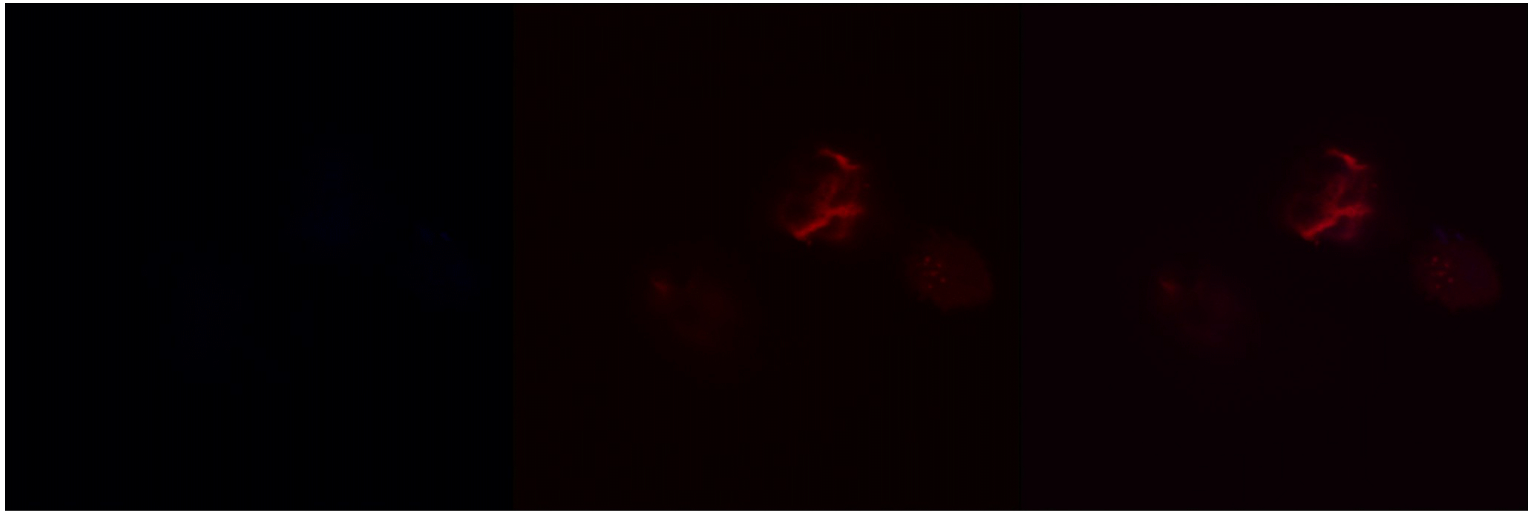


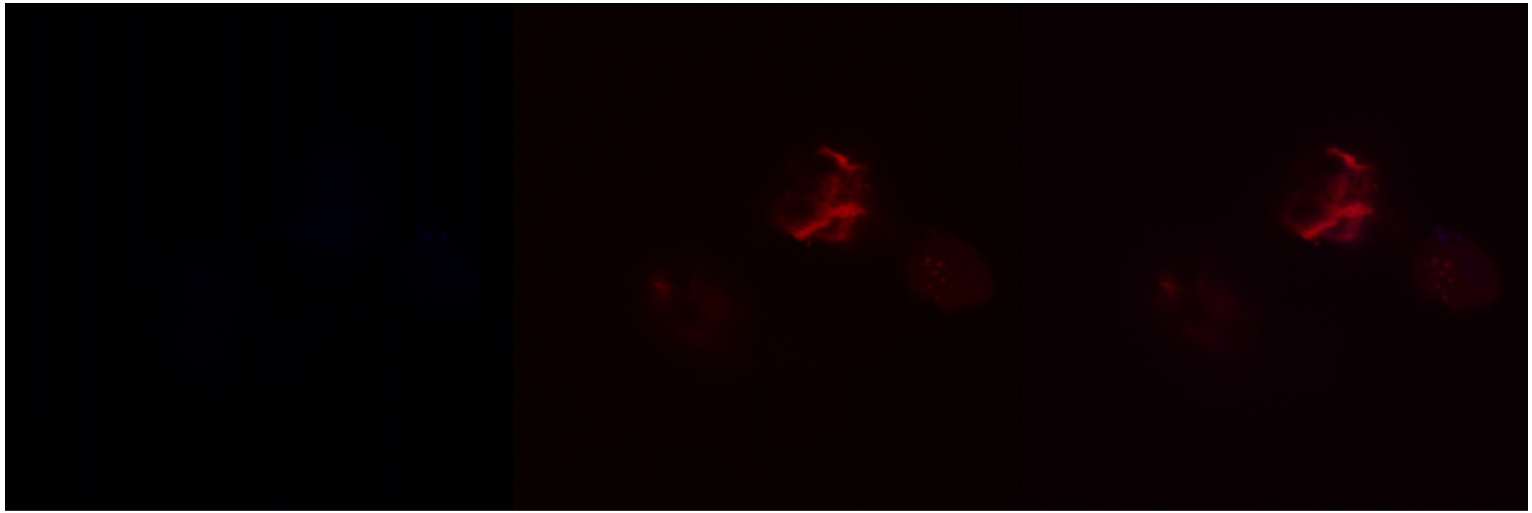
Z-stacking of laser confocal images of RhoB-PEI(1800)-cut-SWNTs in BxPC3 pancreatic cancer cells. The images were taken for DAPI for the nuclei (left) and rhodamine B for the nanotubes (center) stainings after 1 h incubation. The two images are superimposed to show that PEI(1800)-cut-SWNTs can enter the nuclei of BxPC3 pancreatic cancer cells (right).



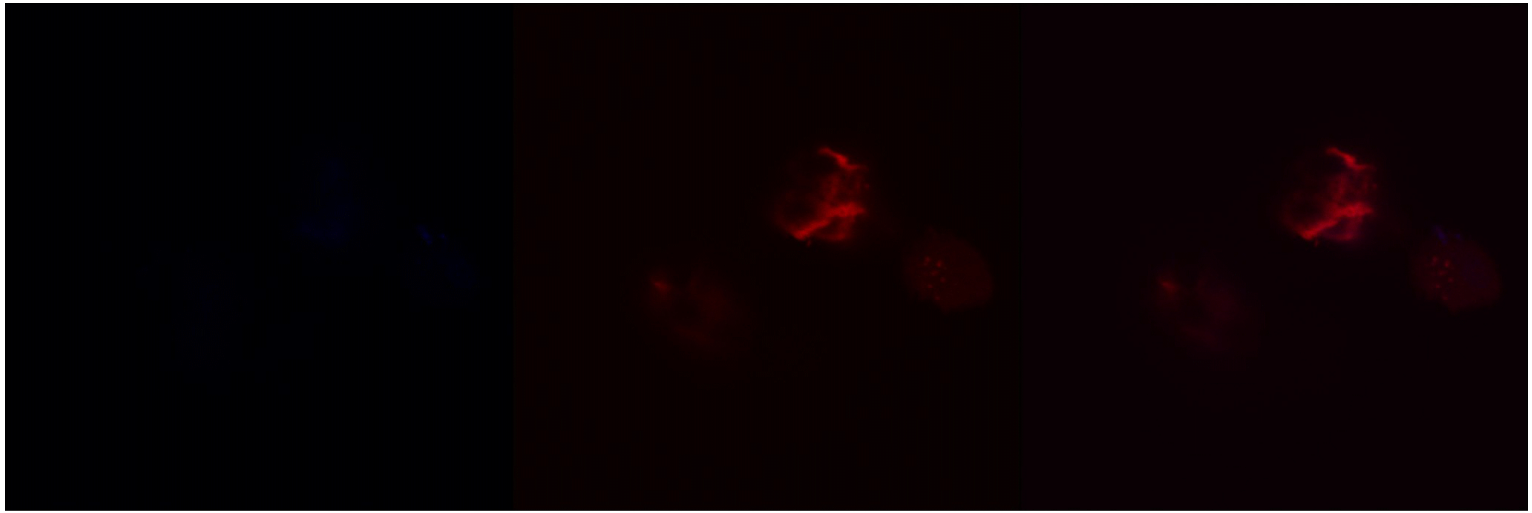
Z-stacking of laser confocal images of RhoB-PEI(1800)-cut-SWNTs in BxPC3 pancreatic cancer cells. The images were taken for DAPI for the nuclei (left) and rhodamine B for the nanotubes (center) stainings after 1 h incubation. The two images are superimposed to show that PEI(1800)-cut-SWNTs can enter the nuclei of BxPC3 pancreatic cancer cells (right).



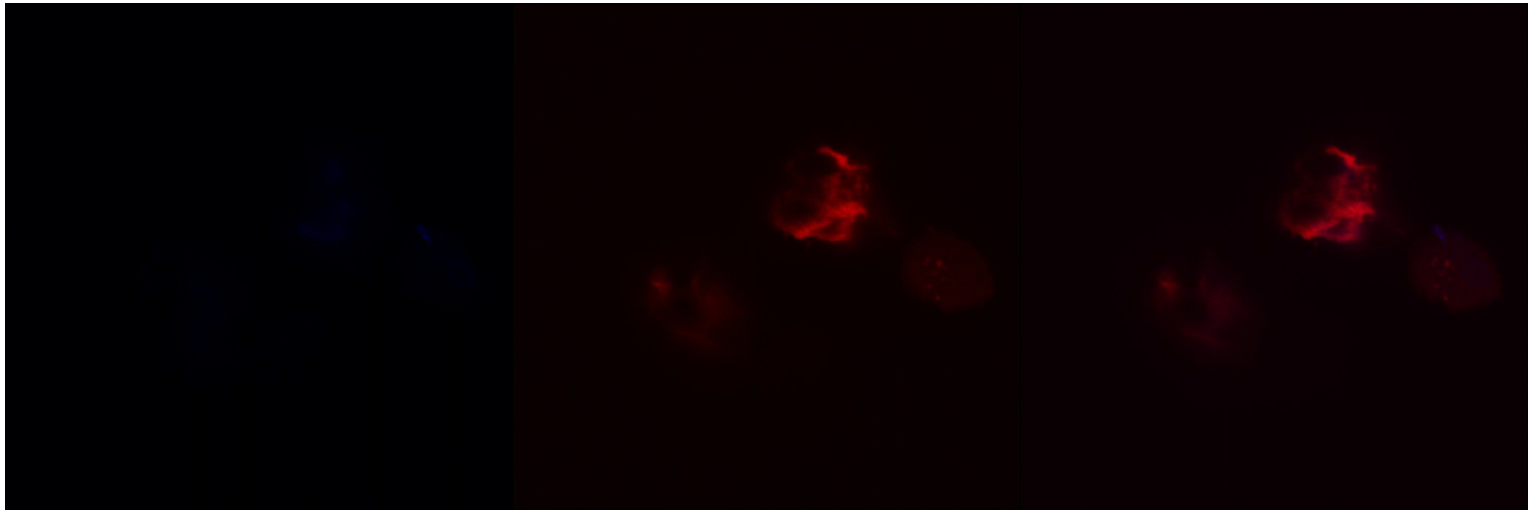
Z-stacking of laser confocal images of RhoB-PEI(1800)-cut-SWNTs in BxPC3 pancreatic cancer cells. The images were taken for DAPI for the nuclei (left) and rhodamine B for the nanotubes (center) stainings after 1 h incubation. The two images are superimposed to show that PEI(1800)-cut-SWNTs can enter the nuclei of BxPC3 pancreatic cancer cells (right).



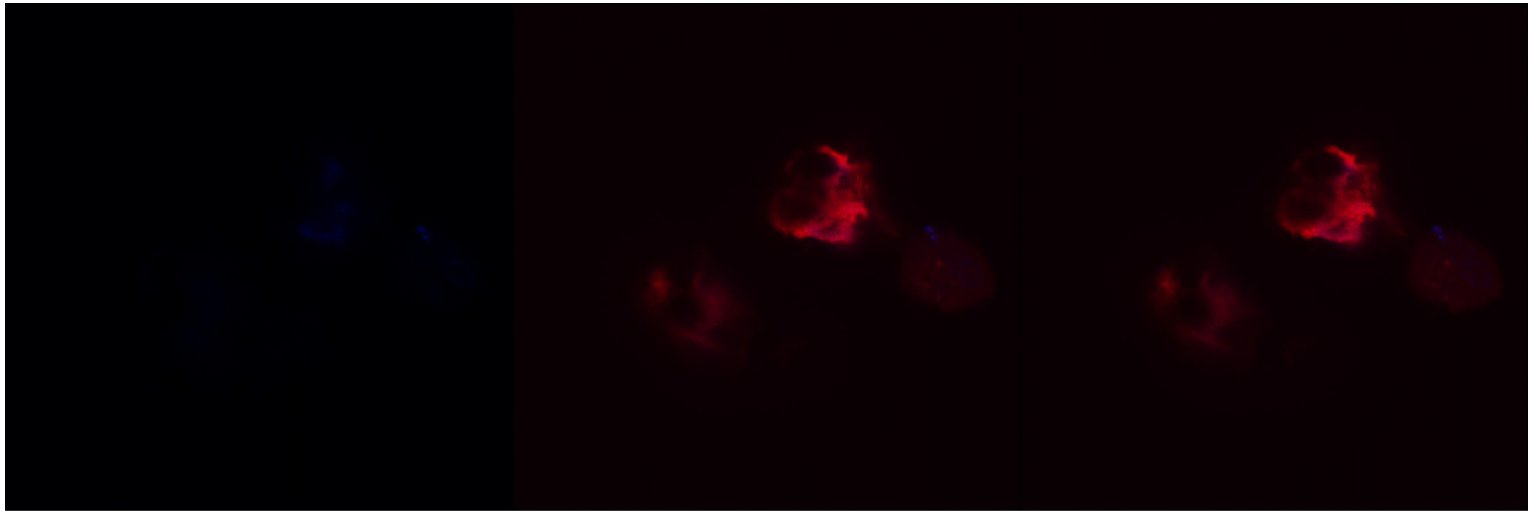
Z-stacking of laser confocal images of RhoB-PEI(1800)-cut-SWNTs in BxPC3 pancreatic cancer cells. The images were taken for DAPI for the nuclei (left) and rhodamine B for the nanotubes (center) stainings after 1 h incubation. The two images are superimposed to show that PEI(1800)-cut-SWNTs can enter the nuclei of BxPC3 pancreatic cancer cells (right).



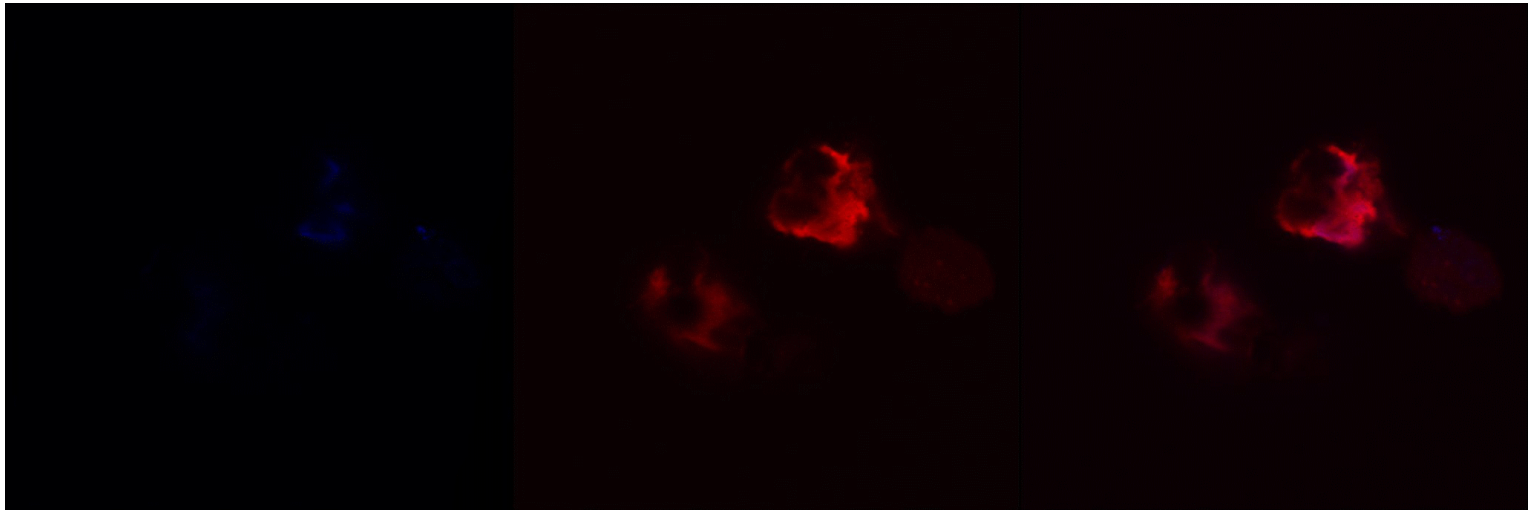
Z-stacking of laser confocal images of RhoB-PEI(1800)-cut-SWNTs in BxPC3 pancreatic cancer cells. The images were taken for DAPI for the nuclei (left) and rhodamine B for the nanotubes (center) stainings after 1 h incubation. The two images are superimposed to show that PEI(1800)-cut-SWNTs can enter the nuclei of BxPC3 pancreatic cancer cells (right).



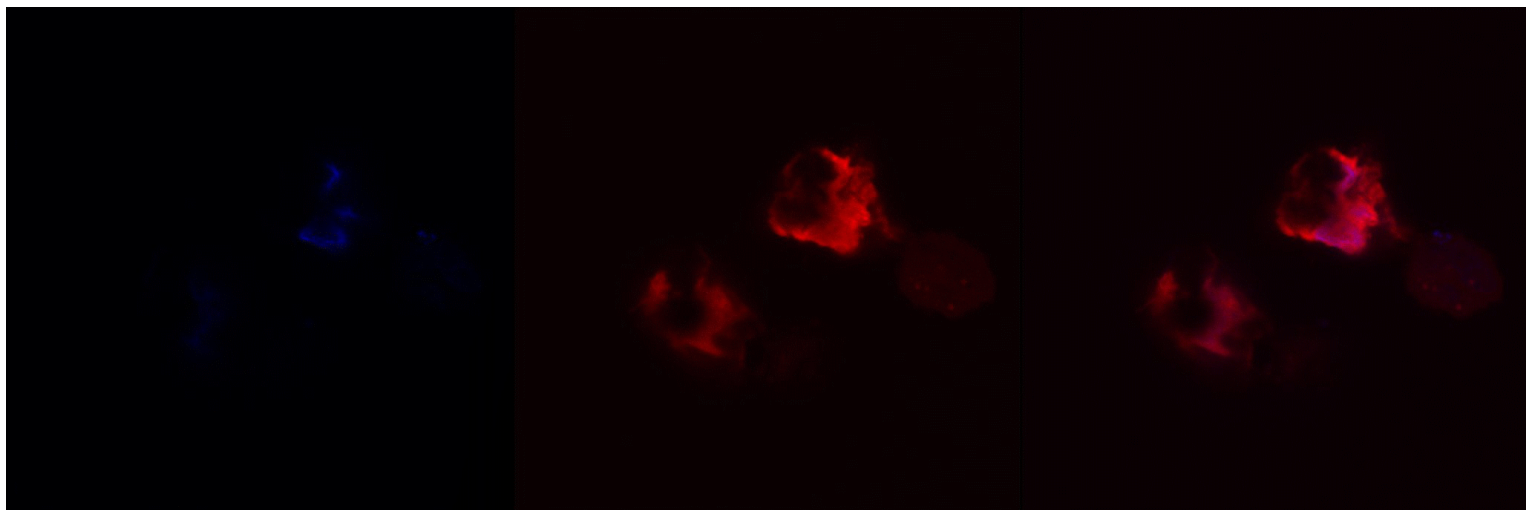
Z-stacking of laser confocal images of RhoB-PEI(1800)-cut-SWNTs in BxPC3 pancreatic cancer cells. The images were taken for DAPI for the nuclei (left) and rhodamine B for the nanotubes (center) stainings after 1 h incubation. The two images are superimposed to show that PEI(1800)-cut-SWNTs can enter the nuclei of BxPC3 pancreatic cancer cells (right).



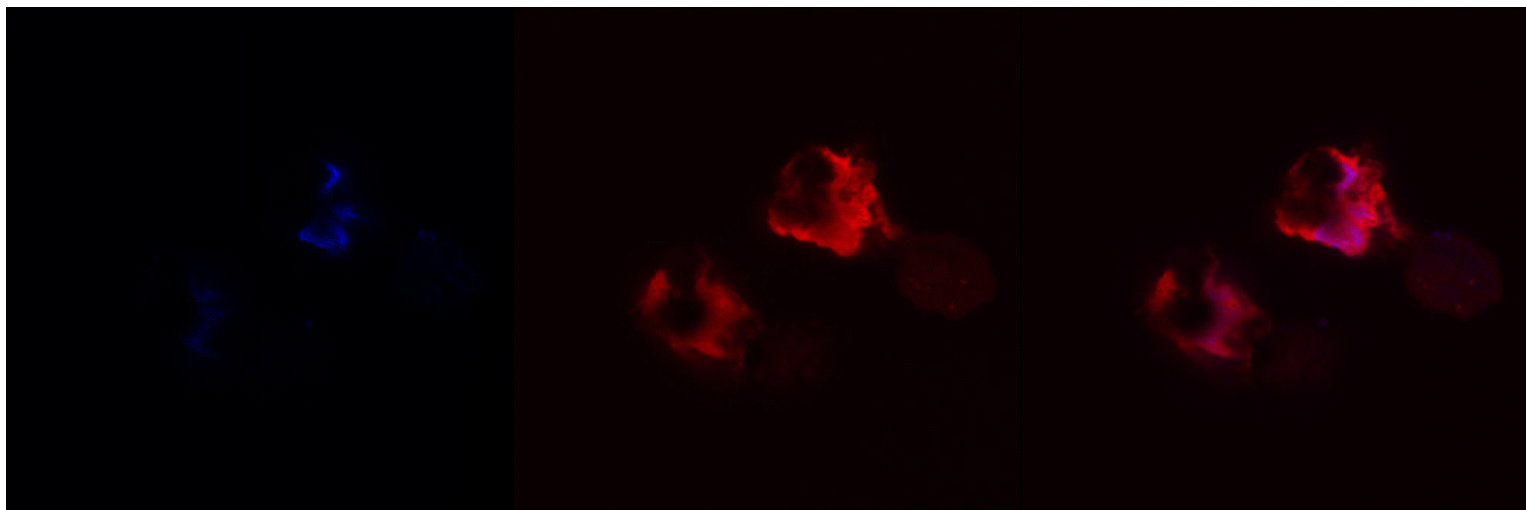
Z-stacking of laser confocal images of RhoB-PEI(1800)-cut-SWNTs in BxPC3 pancreatic cancer cells. The images were taken for DAPI for the nuclei (left) and rhodamine B for the nanotubes (center) stainings after 1 h incubation. The two images are superimposed to show that PEI(1800)-cut-SWNTs can enter the nuclei of BxPC3 pancreatic cancer cells (right).



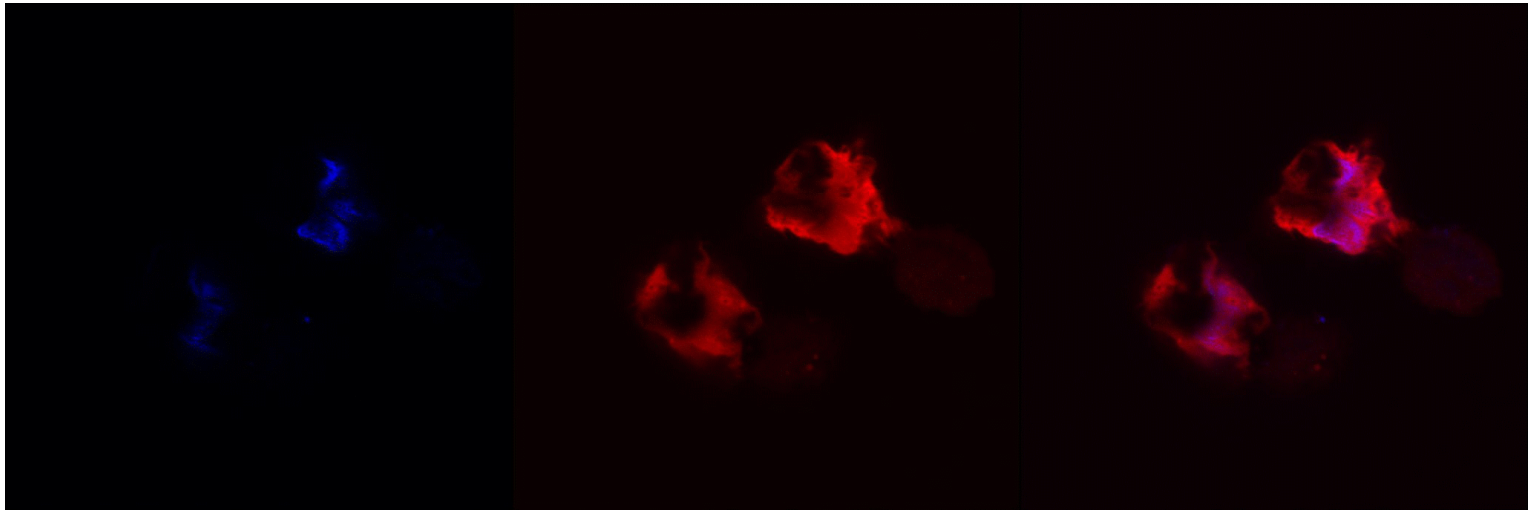
Z-stacking of laser confocal images of RhoB-PEI(1800)-cut-SWNTs in BxPC3 pancreatic cancer cells. The images were taken for DAPI for the nuclei (left) and rhodamine B for the nanotubes (center) stainings after 1 h incubation. The two images are superimposed to show that PEI(1800)-cut-SWNTs can enter the nuclei of BxPC3 pancreatic cancer cells (right).



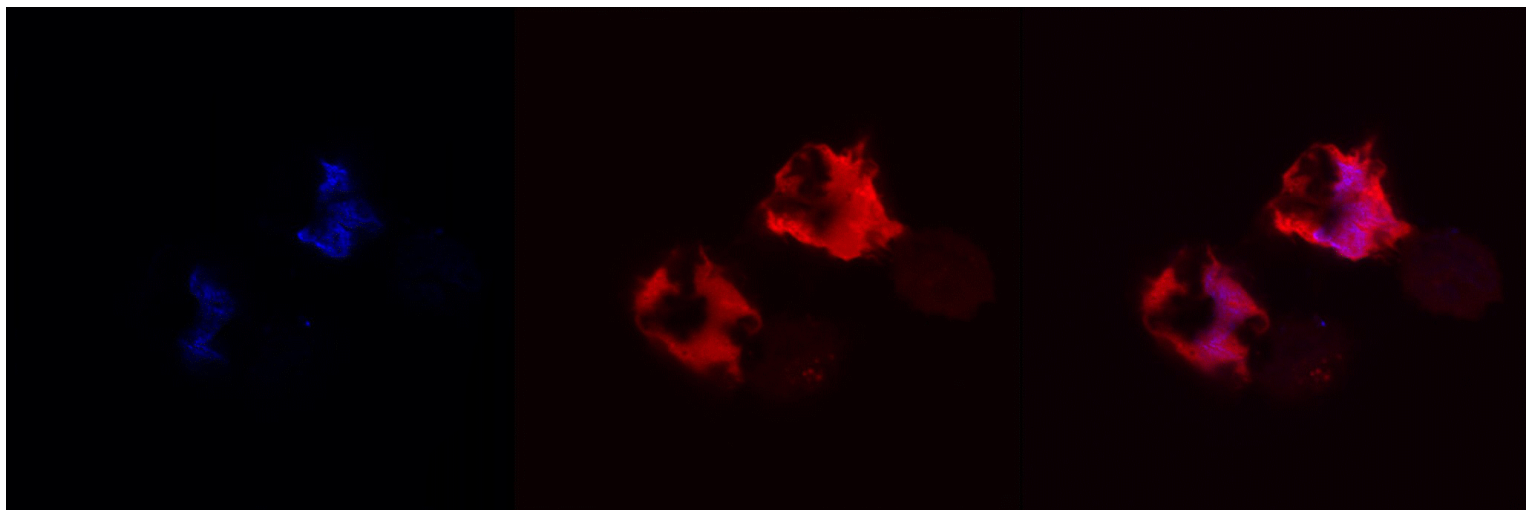
Z-stacking of laser confocal images of RhoB-PEI(1800)-cut-SWNTs in BxPC3 pancreatic cancer cells. The images were taken for DAPI for the nuclei (left) and rhodamine B for the nanotubes (center) stainings after 1 h incubation. The two images are superimposed to show that PEI(1800)-cut-SWNTs can enter the nuclei of BxPC3 pancreatic cancer cells (right).



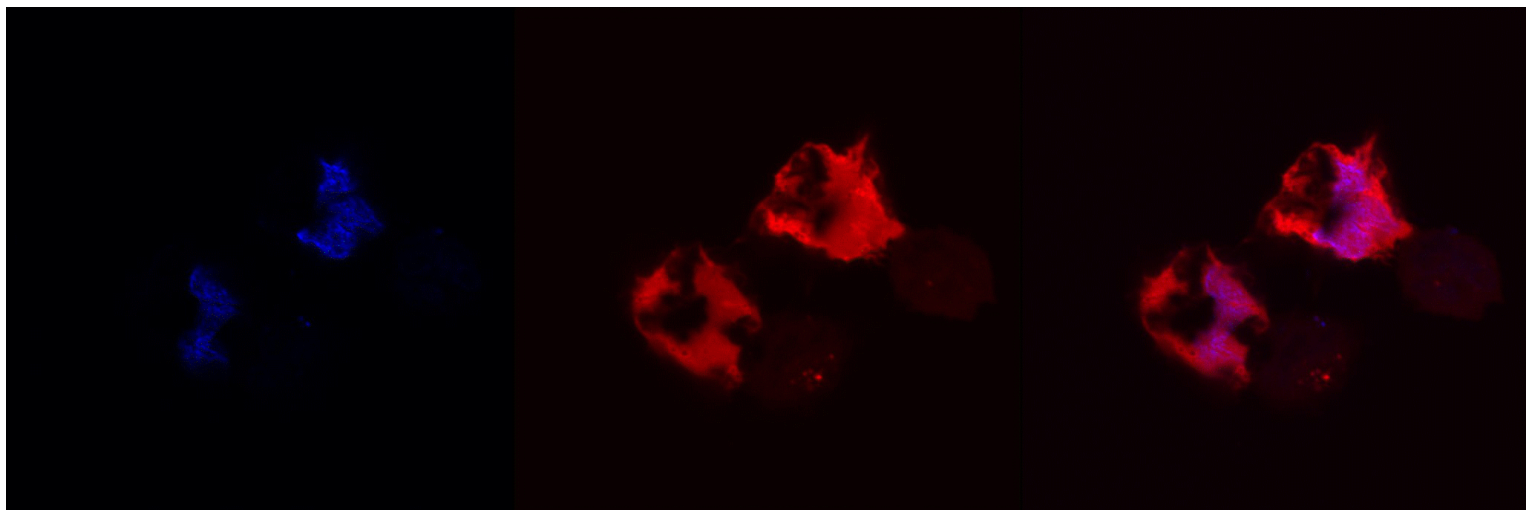
Z-stacking of laser confocal images of RhoB-PEI(1800)-cut-SWNTs in BxPC3 pancreatic cancer cells. The images were taken for DAPI for the nuclei (left) and rhodamine B for the nanotubes (center) stainings after 1 h incubation. The two images are superimposed to show that PEI(1800)-cut-SWNTs can enter the nuclei of BxPC3 pancreatic cancer cells (right).



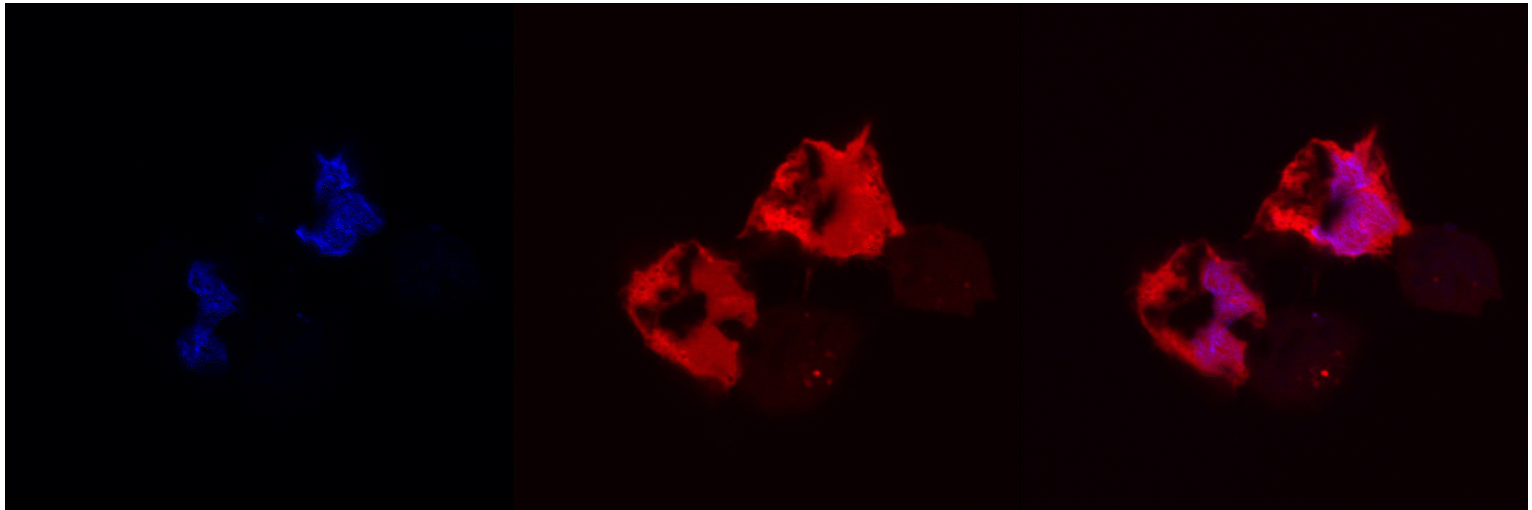
Z-stacking of laser confocal images of RhoB-PEI(1800)-cut-SWNTs in BxPC3 pancreatic cancer cells. The images were taken for DAPI for the nuclei (left) and rhodamine B for the nanotubes (center) stainings after 1 h incubation. The two images are superimposed to show that PEI(1800)-cut-SWNTs can enter the nuclei of BxPC3 pancreatic cancer cells (right).



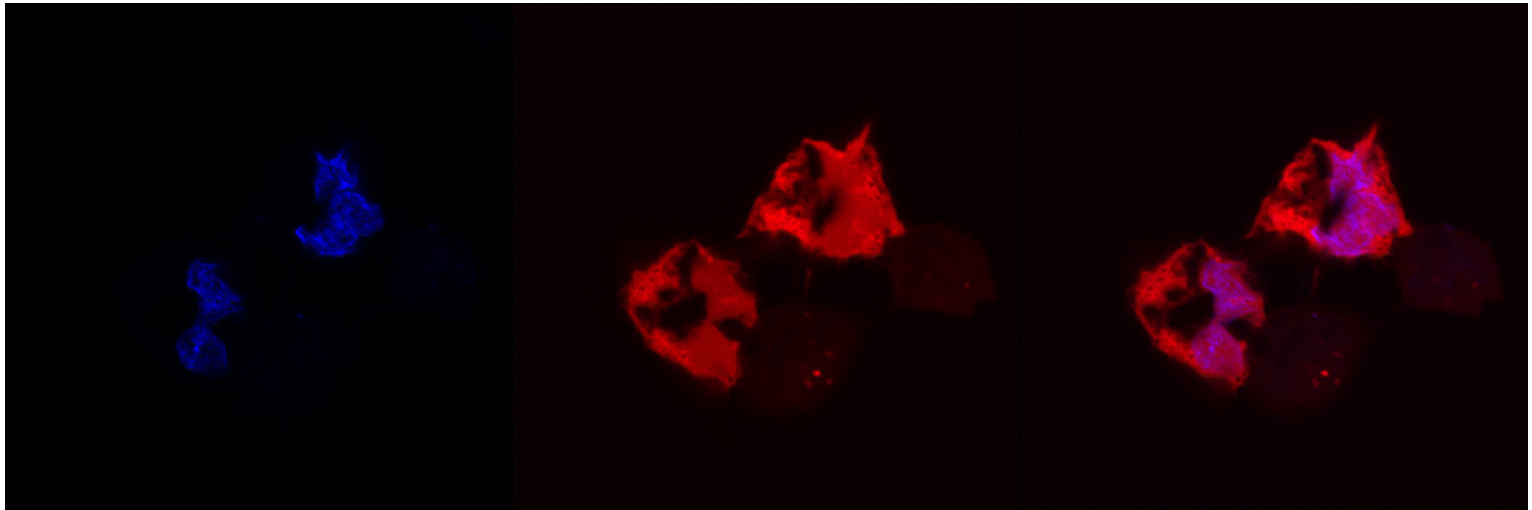
Z-stacking of laser confocal images of RhoB-PEI(1800)-cut-SWNTs in BxPC3 pancreatic cancer cells. The images were taken for DAPI for the nuclei (left) and rhodamine B for the nanotubes (center) stainings after 1 h incubation. The two images are superimposed to show that PEI(1800)-cut-SWNTs can enter the nuclei of BxPC3 pancreatic cancer cells (right).



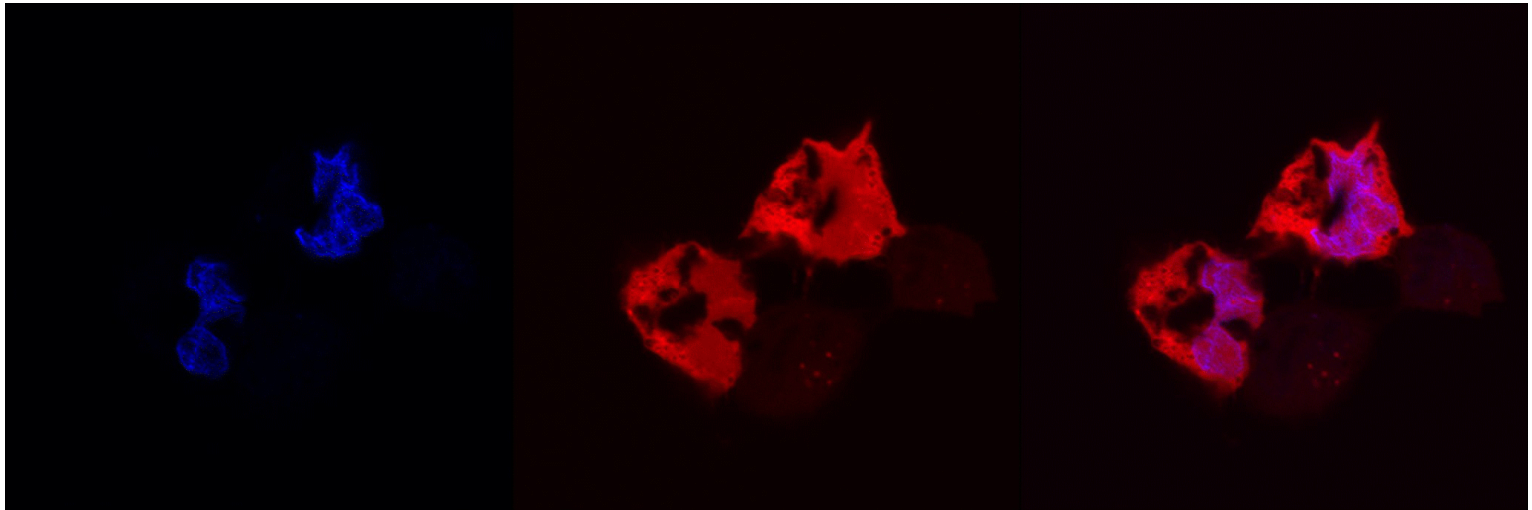
Z-stacking of laser confocal images of RhoB-PEI(1800)-cut-SWNTs in BxPC3 pancreatic cancer cells. The images were taken for DAPI for the nuclei (left) and rhodamine B for the nanotubes (center) stainings after 1 h incubation. The two images are superimposed to show that PEI(1800)-cut-SWNTs can enter the nuclei of BxPC3 pancreatic cancer cells (right).



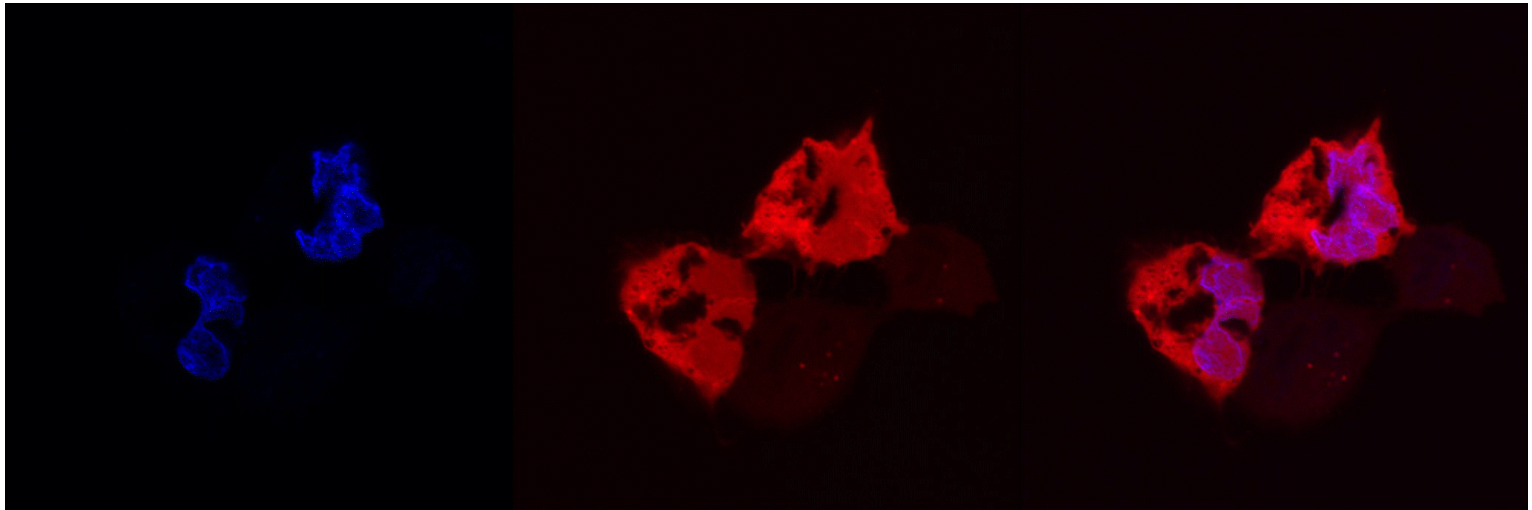
Z-stacking of laser confocal images of RhoB-PEI(1800)-cut-SWNTs in BxPC3 pancreatic cancer cells. The images were taken for DAPI for the nuclei (left) and rhodamine B for the nanotubes (center) stainings after 1 h incubation. The two images are superimposed to show that PEI(1800)-cut-SWNTs can enter the nuclei of BxPC3 pancreatic cancer cells (right).



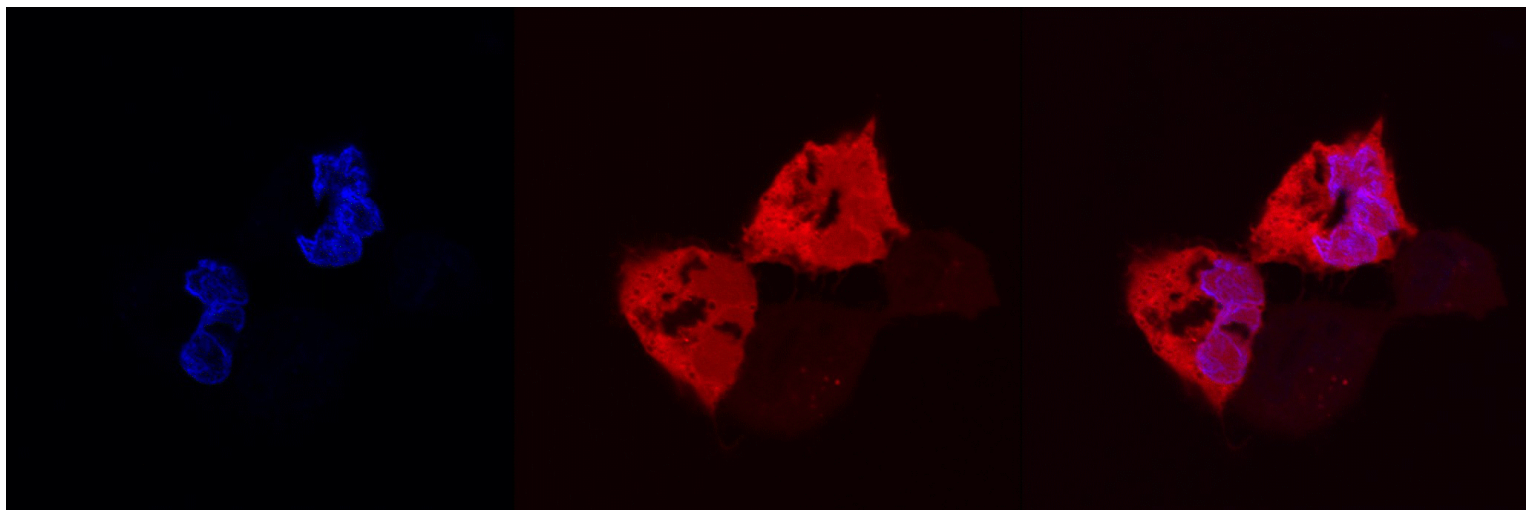
Z-stacking of laser confocal images of RhoB-PEI(1800)-cut-SWNTs in BxPC3 pancreatic cancer cells. The images were taken for DAPI for the nuclei (left) and rhodamine B for the nanotubes (center) stainings after 1 h incubation. The two images are superimposed to show that PEI(1800)-cut-SWNTs can enter the nuclei of BxPC3 pancreatic cancer cells (right).



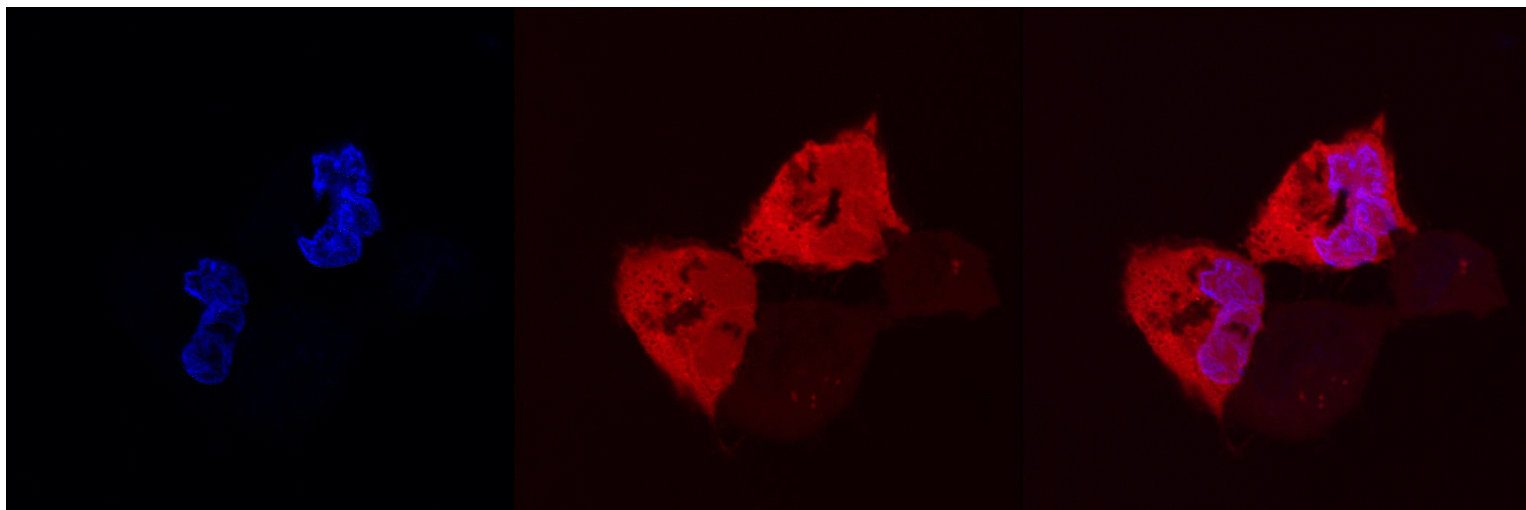
Z-stacking of laser confocal images of RhoB-PEI(1800)-cut-SWNTs in BxPC3 pancreatic cancer cells. The images were taken for DAPI for the nuclei (left) and rhodamine B for the nanotubes (center) stainings after 1 h incubation. The two images are superimposed to show that PEI(1800)-cut-SWNTs can enter the nuclei of BxPC3 pancreatic cancer cells (right).



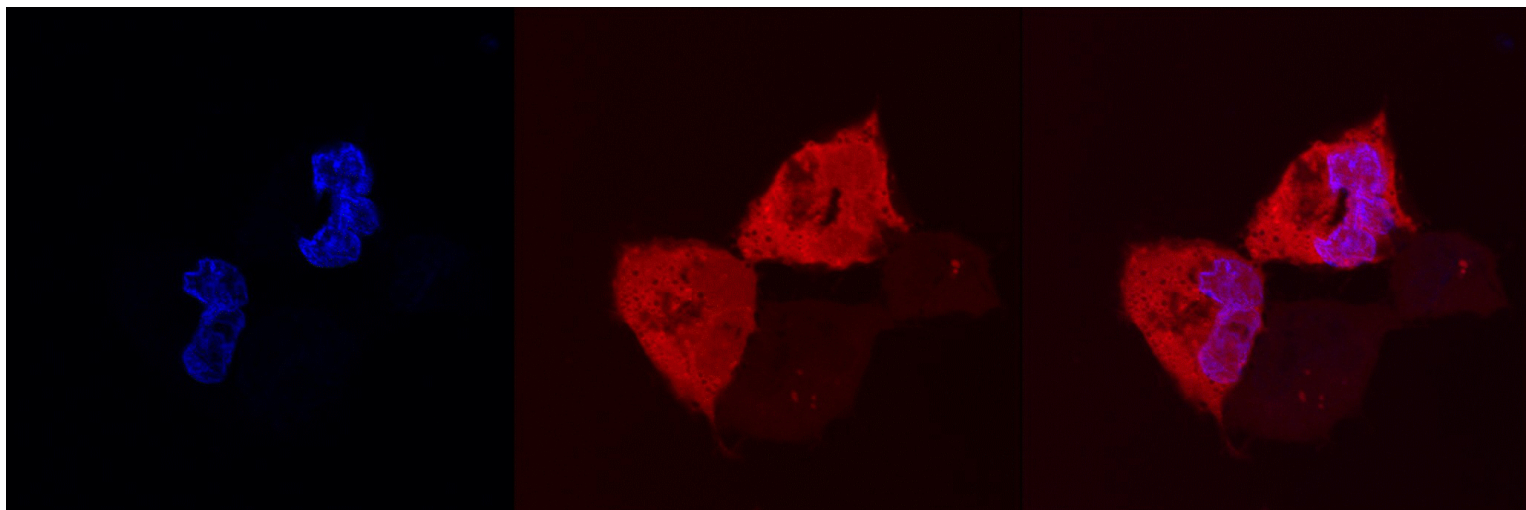
Z-stacking of laser confocal images of RhoB-PEI(1800)-cut-SWNTs in BxPC3 pancreatic cancer cells. The images were taken for DAPI for the nuclei (left) and rhodamine B for the nanotubes (center) stainings after 1 h incubation. The two images are superimposed to show that PEI(1800)-cut-SWNTs can enter the nuclei of BxPC3 pancreatic cancer cells (right).



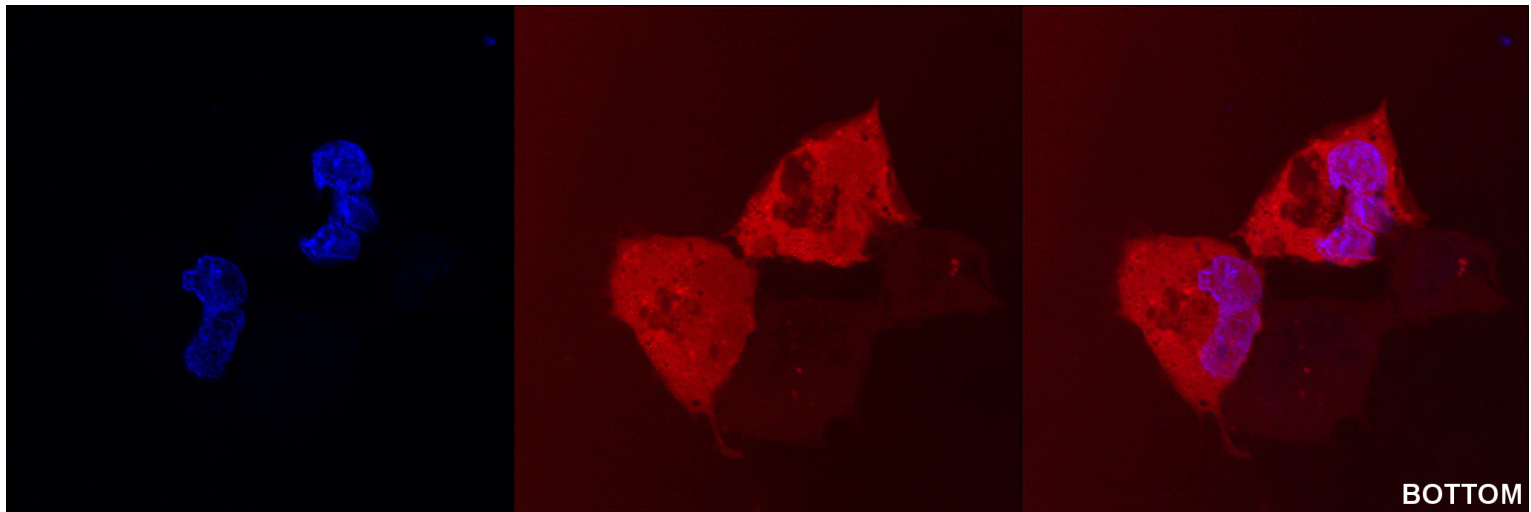
Z-stacking of laser confocal images of RhoB-PEI(1800)-cut-SWNTs in BxPC3 pancreatic cancer cells. The images were taken for DAPI for the nuclei (left) and rhodamine B for the nanotubes (center) stainings after 1 h incubation. The two images are superimposed to show that PEI(1800)-cut-SWNTs can enter the nuclei of BxPC3 pancreatic cancer cells (right).



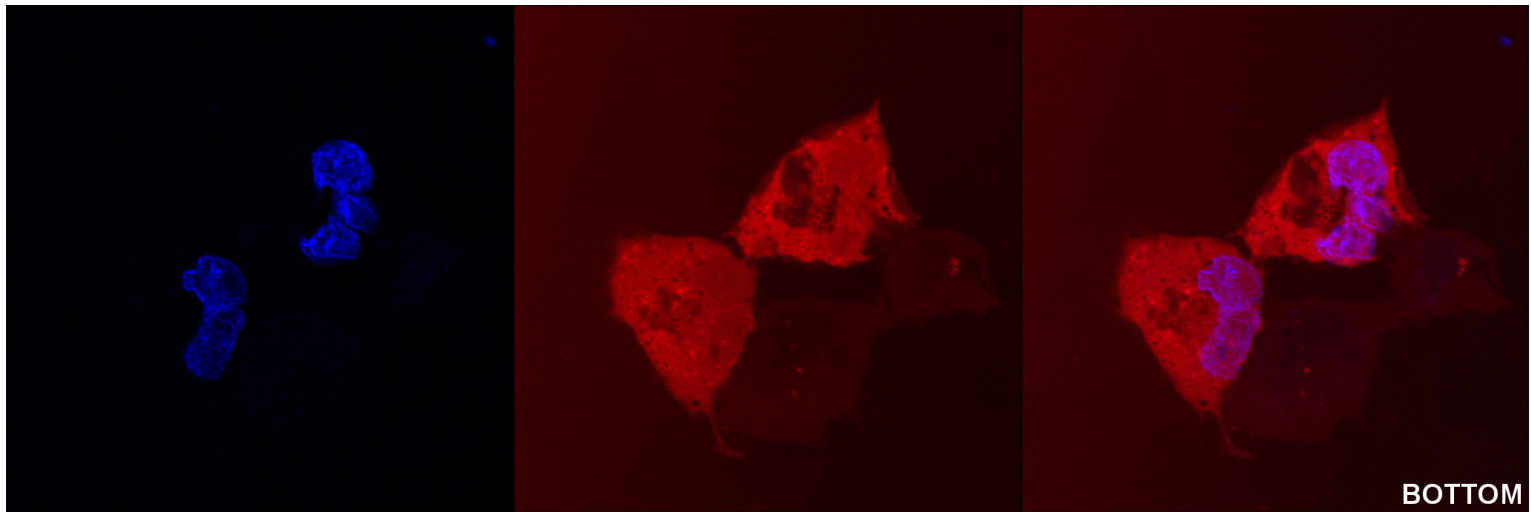
Z-stacking of laser confocal images of RhoB-PEI(1800)-cut-SWNTs in BxPC3 pancreatic cancer cells. The images were taken for DAPI for the nuclei (left) and rhodamine B for the nanotubes (center) stainings after 1 h incubation. The two images are superimposed to show that PEI(1800)-cut-SWNTs can enter the nuclei of BxPC3 pancreatic cancer cells (right).



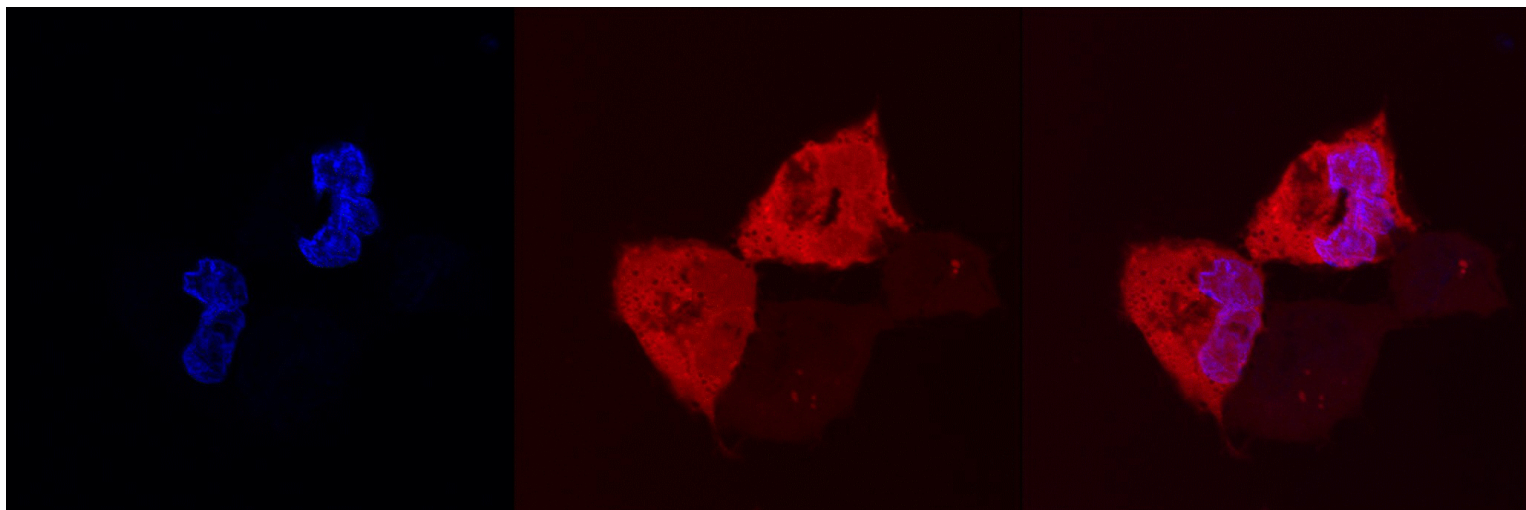
Z-stacking of laser confocal images of RhoB-PEI(1800)-cut-SWNTs in BxPC3 pancreatic cancer cells. The images were taken for DAPI for the nuclei (left) and rhodamine B for the nanotubes (center) stainings after 1 h incubation. The two images are superimposed to show that PEI(1800)-cut-SWNTs can enter the nuclei of BxPC3 pancreatic cancer cells (right).



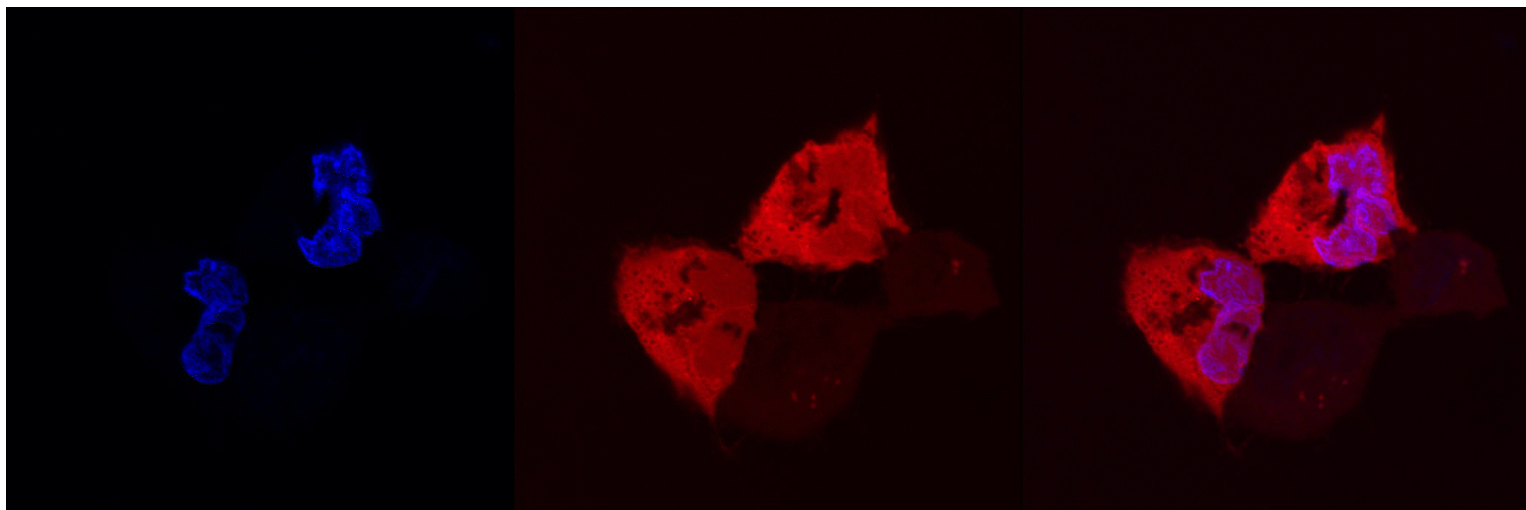
Z-stacking of laser confocal images of RhoB-PEI(1800)-cut-SWNTs in BxPC3 pancreatic cancer cells. The images were taken for DAPI for the nuclei (left) and rhodamine B for the nanotubes (center) stainings after 1 h incubation. The two images are superimposed to show that PEI(1800)-cut-SWNTs can enter the nuclei of BxPC3 pancreatic cancer cells (right).



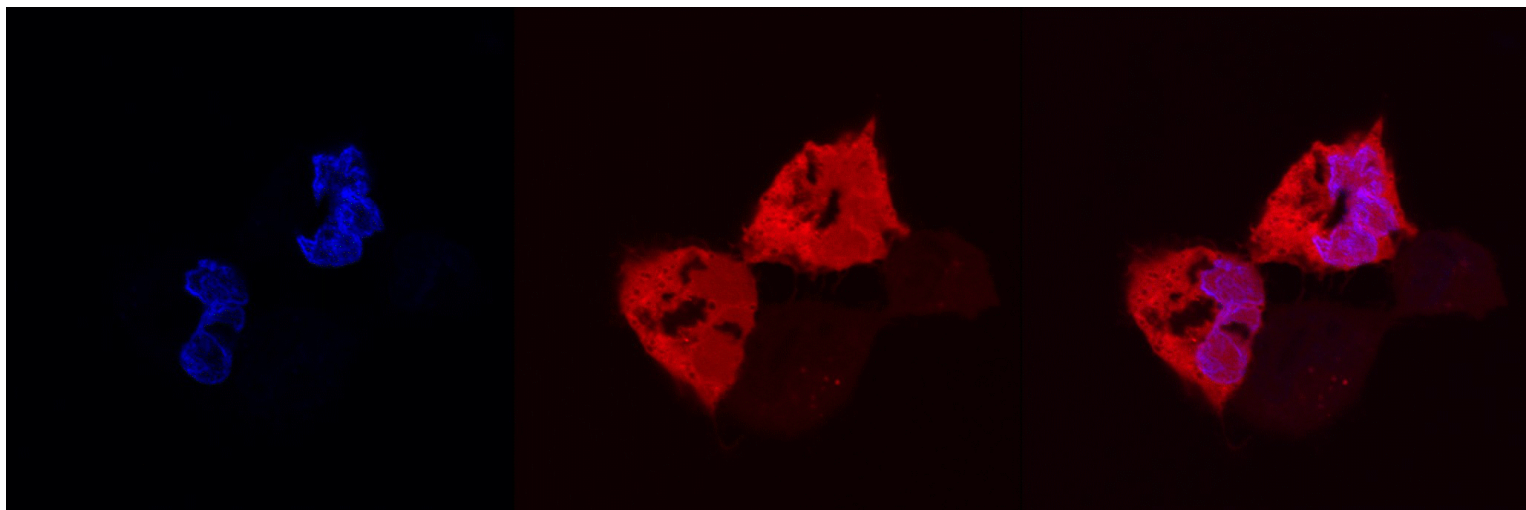
Z-stacking of laser confocal images of RhoB-PEI(1800)-cut-SWNTs in BxPC3 pancreatic cancer cells. The images were taken for DAPI for the nuclei (left) and rhodamine B for the nanotubes (center) stainings after 1 h incubation. The two images are superimposed to show that PEI(1800)-cut-SWNTs can enter the nuclei of BxPC3 pancreatic cancer cells (right).



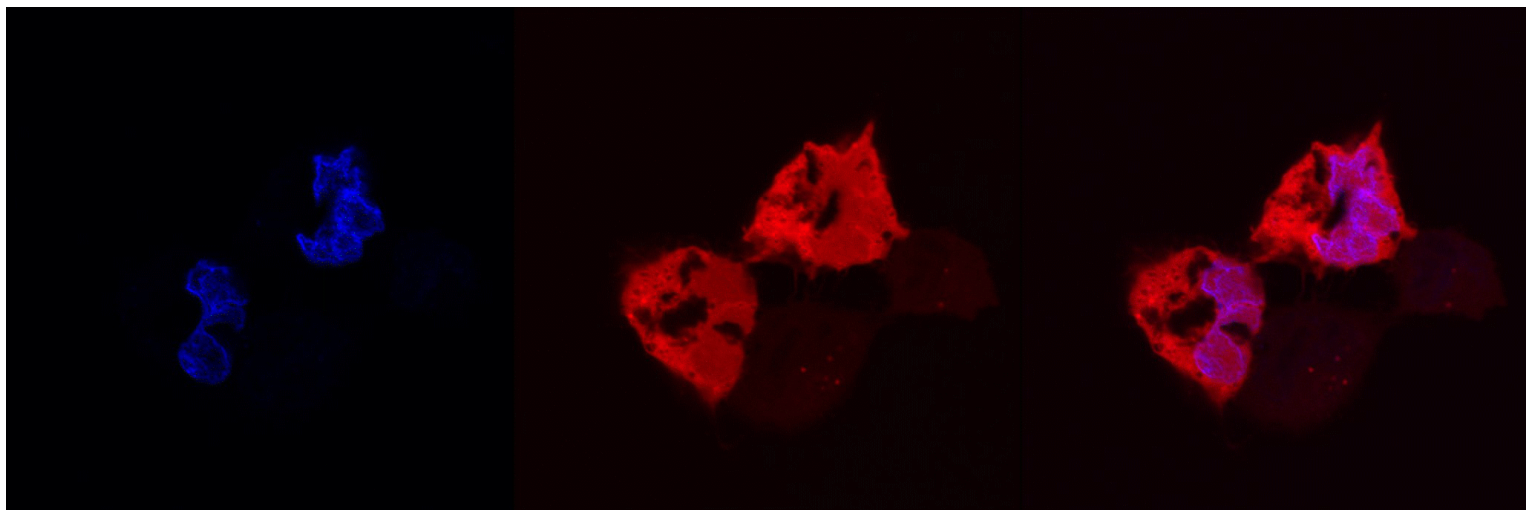
Z-stacking of laser confocal images of RhoB-PEI(1800)-cut-SWNTs in BxPC3 pancreatic cancer cells. The images were taken for DAPI for the nuclei (left) and rhodamine B for the nanotubes (center) stainings after 1 h incubation. The two images are superimposed to show that PEI(1800)-cut-SWNTs can enter the nuclei of BxPC3 pancreatic cancer cells (right).



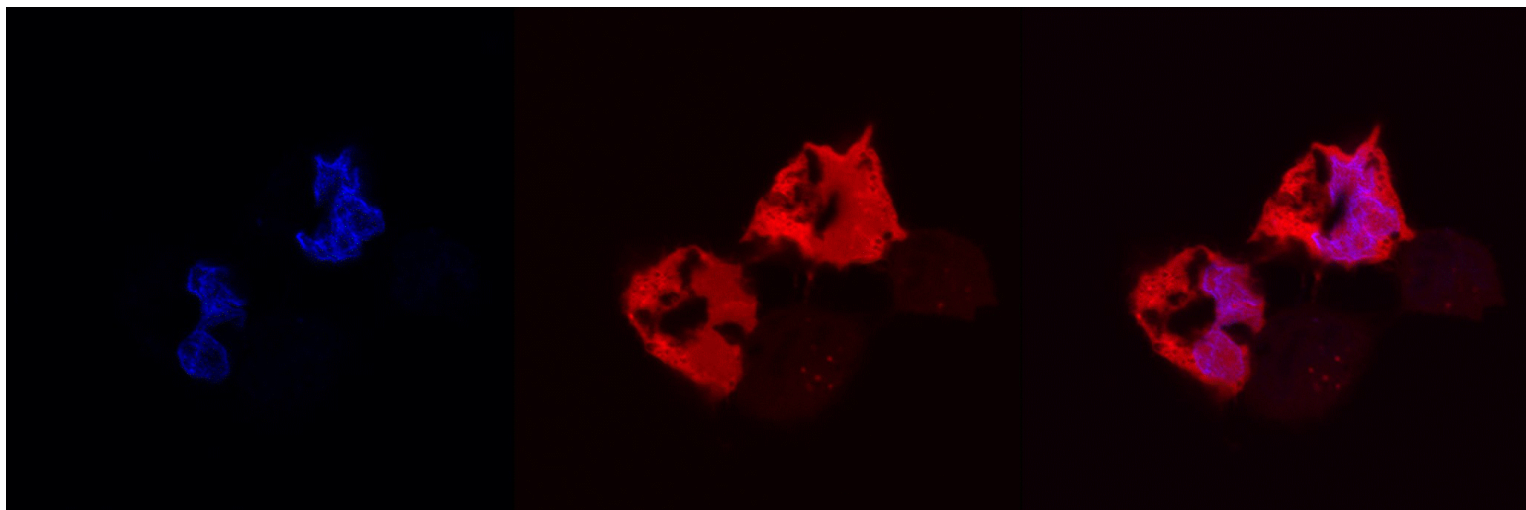
Z-stacking of laser confocal images of RhoB-PEI(1800)-cut-SWNTs in BxPC3 pancreatic cancer cells. The images were taken for DAPI for the nuclei (left) and rhodamine B for the nanotubes (center) stainings after 1 h incubation. The two images are superimposed to show that PEI(1800)-cut-SWNTs can enter the nuclei of BxPC3 pancreatic cancer cells (right).



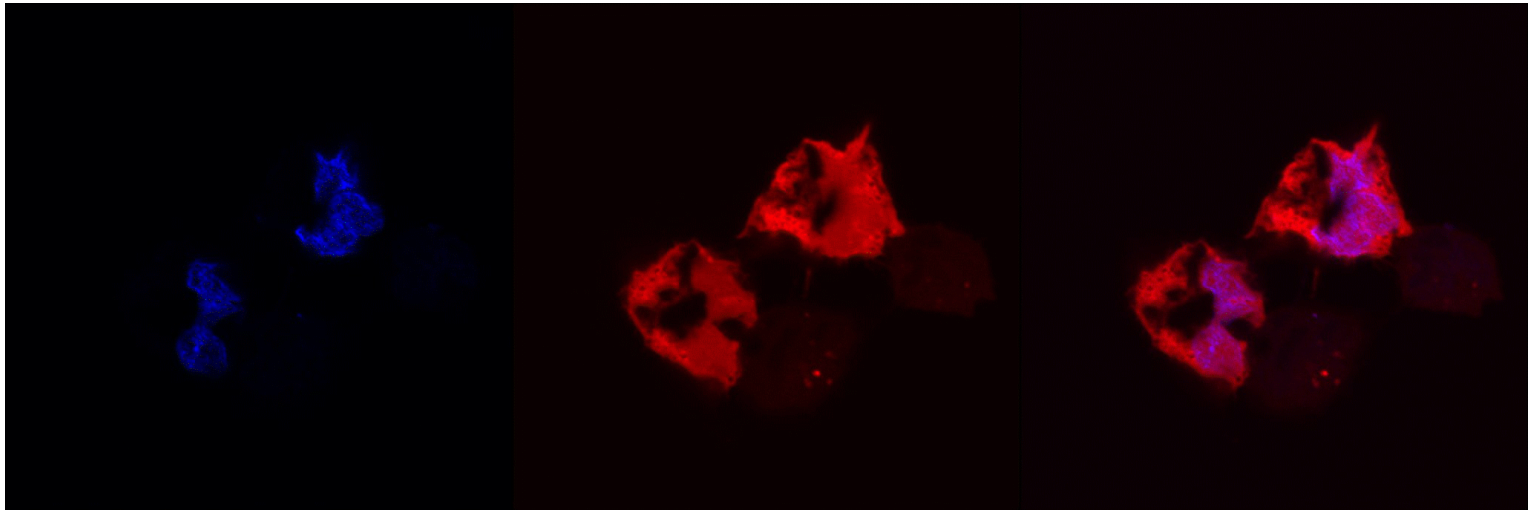
Z-stacking of laser confocal images of RhoB-PEI(1800)-cut-SWNTs in BxPC3 pancreatic cancer cells. The images were taken for DAPI for the nuclei (left) and rhodamine B for the nanotubes (center) stainings after 1 h incubation. The two images are superimposed to show that PEI(1800)-cut-SWNTs can enter the nuclei of BxPC3 pancreatic cancer cells (right).



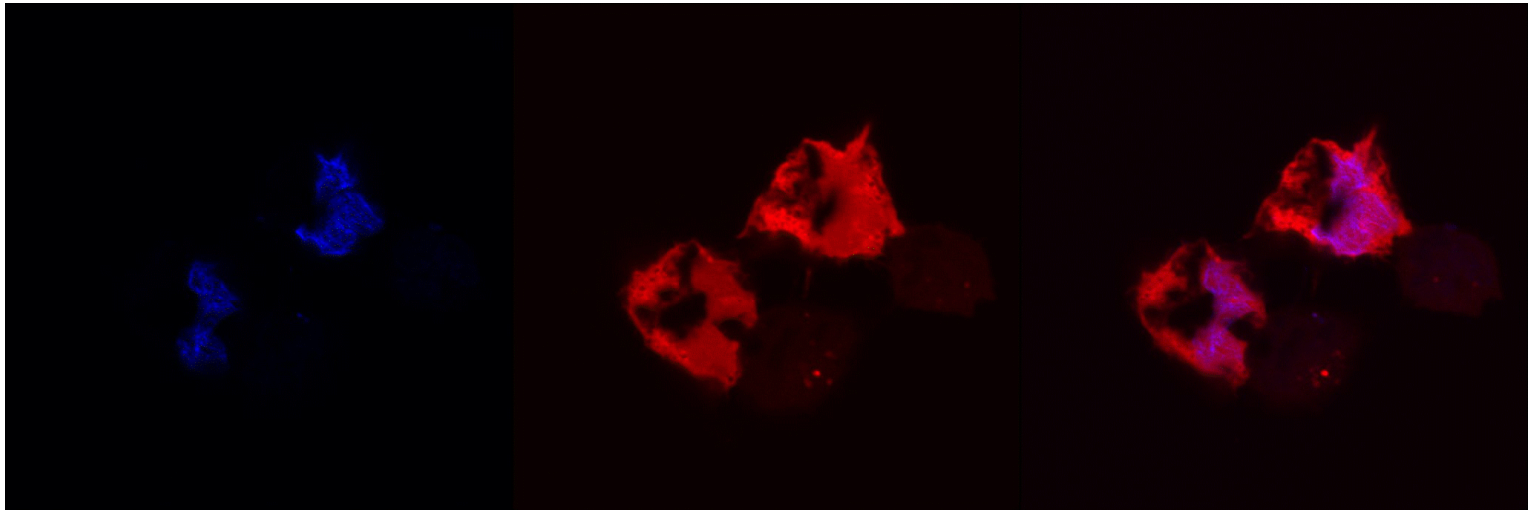
Z-stacking of laser confocal images of RhoB-PEI(1800)-cut-SWNTs in BxPC3 pancreatic cancer cells. The images were taken for DAPI for the nuclei (left) and rhodamine B for the nanotubes (center) stainings after 1 h incubation. The two images are superimposed to show that PEI(1800)-cut-SWNTs can enter the nuclei of BxPC3 pancreatic cancer cells (right).



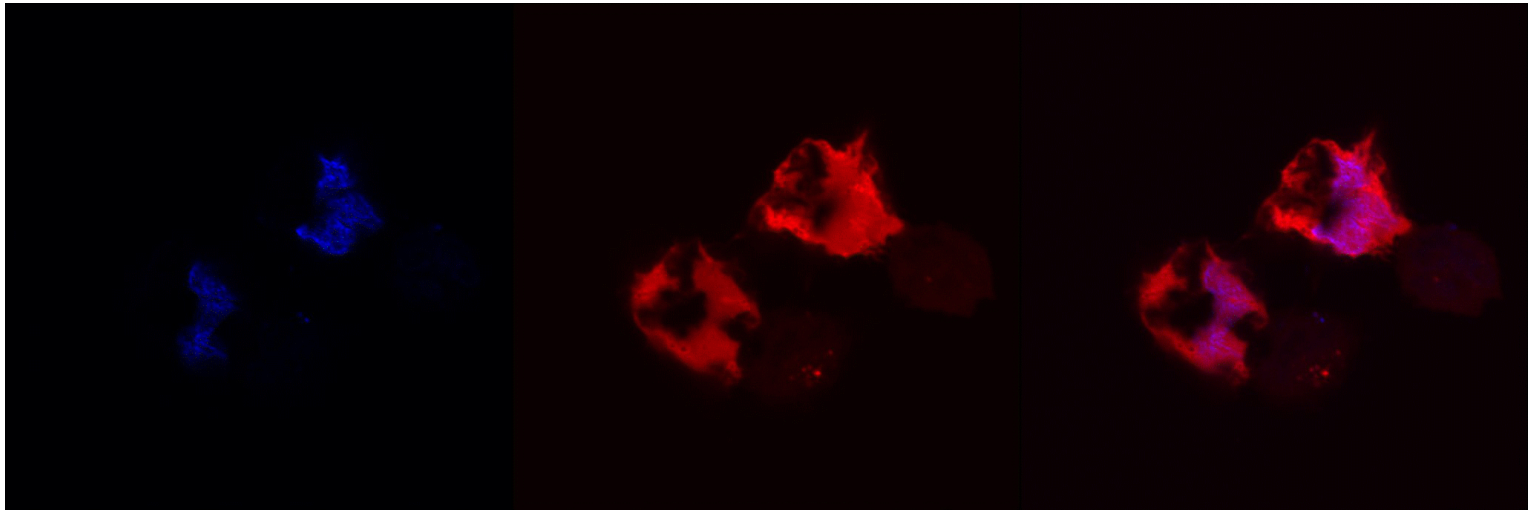
Z-stacking of laser confocal images of RhoB-PEI(1800)-cut-SWNTs in BxPC3 pancreatic cancer cells. The images were taken for DAPI for the nuclei (left) and rhodamine B for the nanotubes (center) stainings after 1 h incubation. The two images are superimposed to show that PEI(1800)-cut-SWNTs can enter the nuclei of BxPC3 pancreatic cancer cells (right).



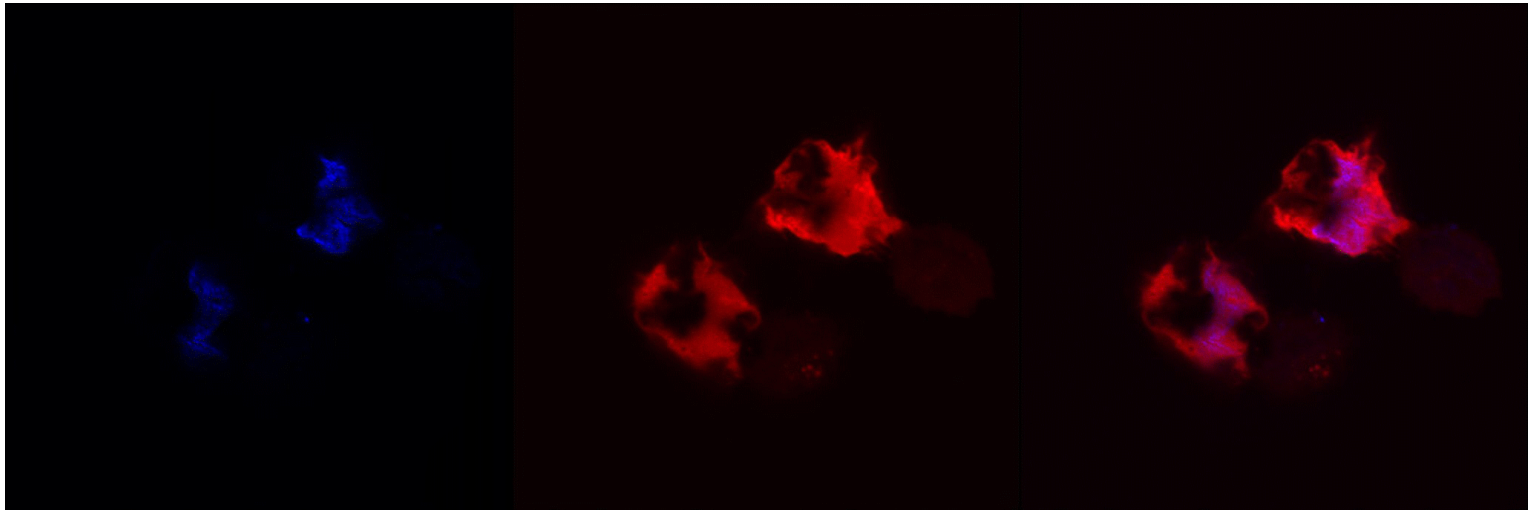
Z-stacking of laser confocal images of RhoB-PEI(1800)-cut-SWNTs in BxPC3 pancreatic cancer cells. The images were taken for DAPI for the nuclei (left) and rhodamine B for the nanotubes (center) stainings after 1 h incubation. The two images are superimposed to show that PEI(1800)-cut-SWNTs can enter the nuclei of BxPC3 pancreatic cancer cells (right).



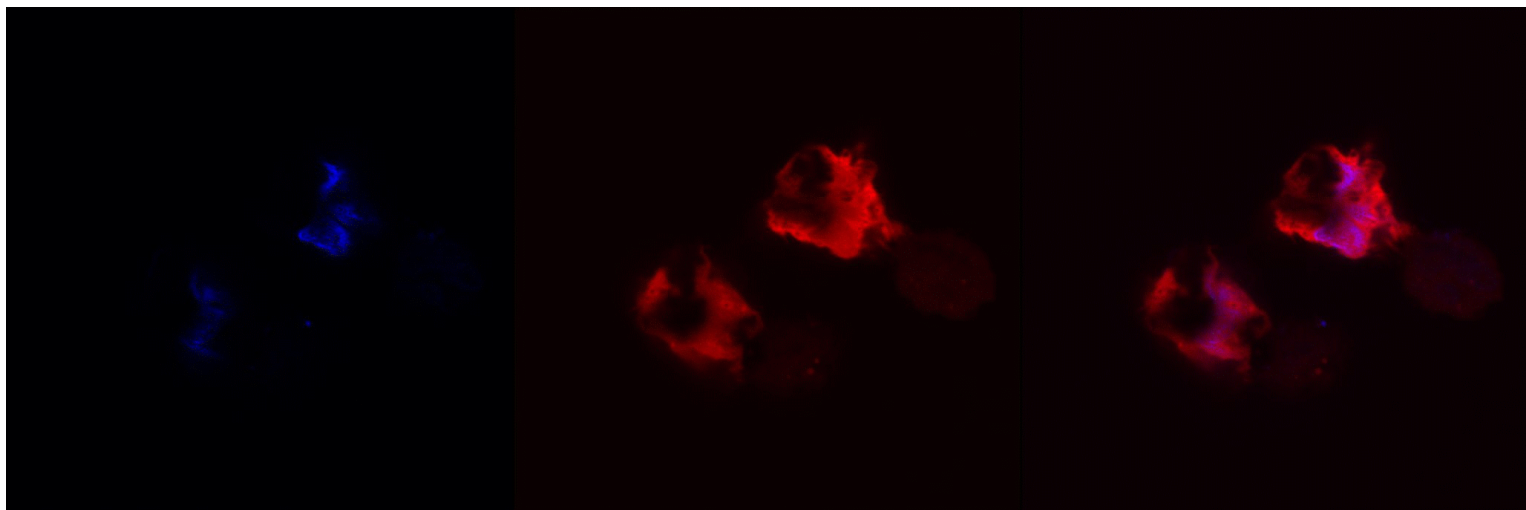
Z-stacking of laser confocal images of RhoB-PEI(1800)-cut-SWNTs in BxPC3 pancreatic cancer cells. The images were taken for DAPI for the nuclei (left) and rhodamine B for the nanotubes (center) stainings after 1 h incubation. The two images are superimposed to show that PEI(1800)-cut-SWNTs can enter the nuclei of BxPC3 pancreatic cancer cells (right).



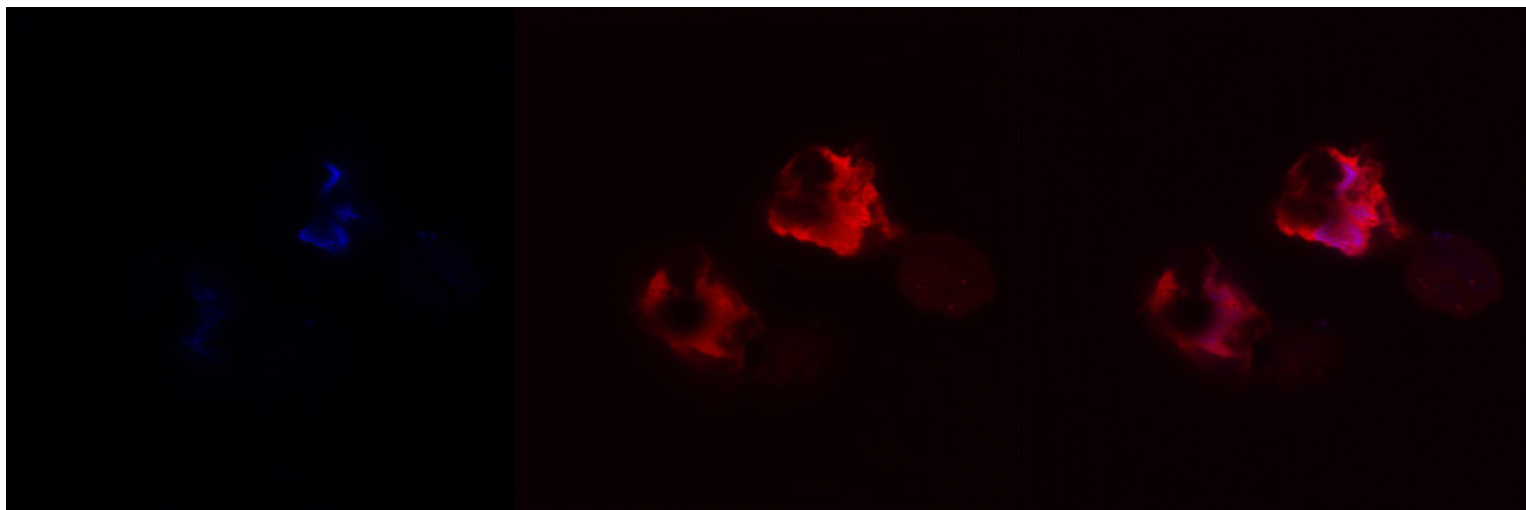
Z-stacking of laser confocal images of RhoB-PEI(1800)-cut-SWNTs in BxPC3 pancreatic cancer cells. The images were taken for DAPI for the nuclei (left) and rhodamine B for the nanotubes (center) stainings after 1 h incubation. The two images are superimposed to show that PEI(1800)-cut-SWNTs can enter the nuclei of BxPC3 pancreatic cancer cells (right).



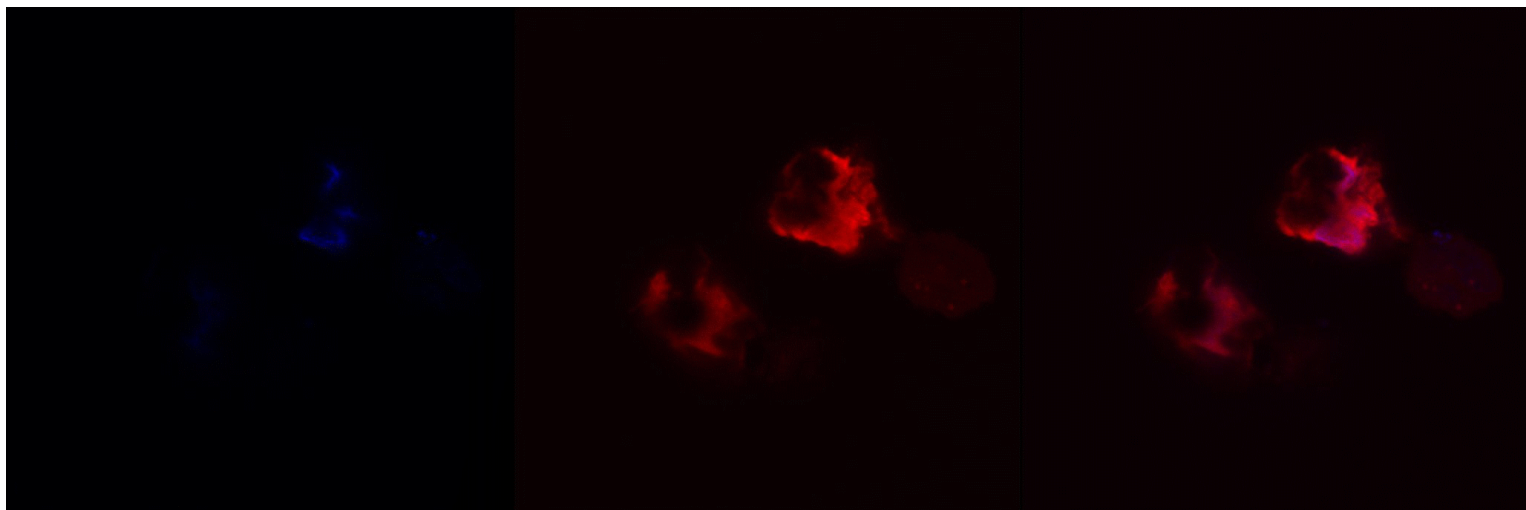
Z-stacking of laser confocal images of RhoB-PEI(1800)-cut-SWNTs in BxPC3 pancreatic cancer cells. The images were taken for DAPI for the nuclei (left) and rhodamine B for the nanotubes (center) stainings after 1 h incubation. The two images are superimposed to show that PEI(1800)-cut-SWNTs can enter the nuclei of BxPC3 pancreatic cancer cells (right).



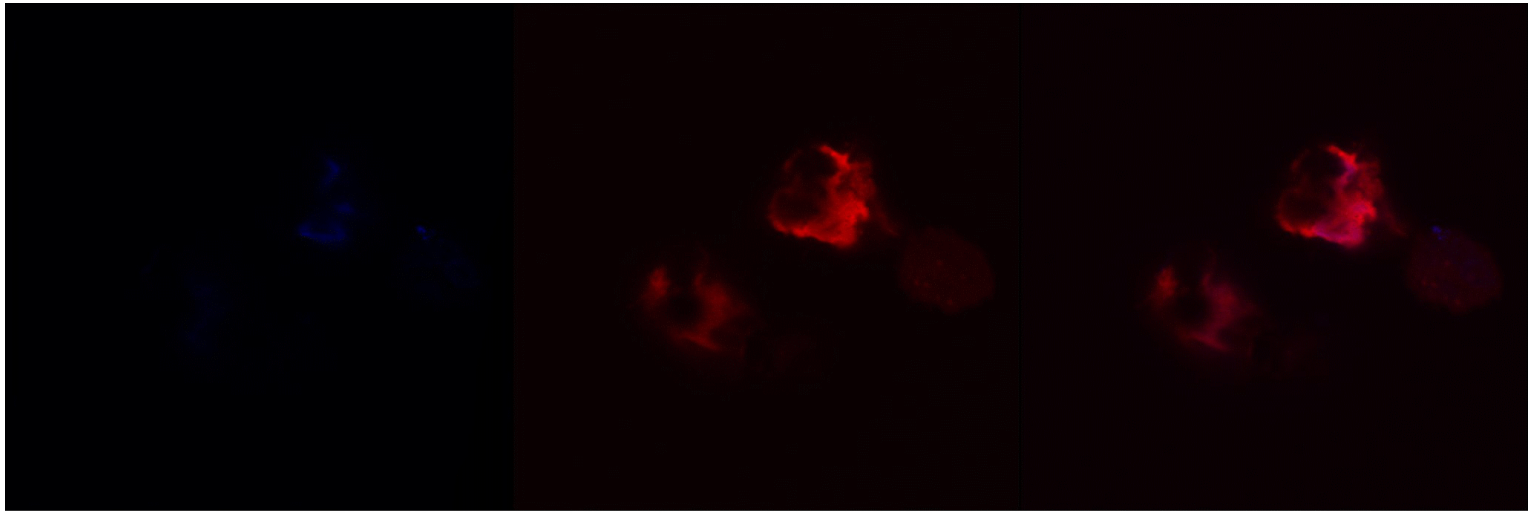
Z-stacking of laser confocal images of RhoB-PEI(1800)-cut-SWNTs in BxPC3 pancreatic cancer cells. The images were taken for DAPI for the nuclei (left) and rhodamine B for the nanotubes (center) stainings after 1 h incubation. The two images are superimposed to show that PEI(1800)-cut-SWNTs can enter the nuclei of BxPC3 pancreatic cancer cells (right).



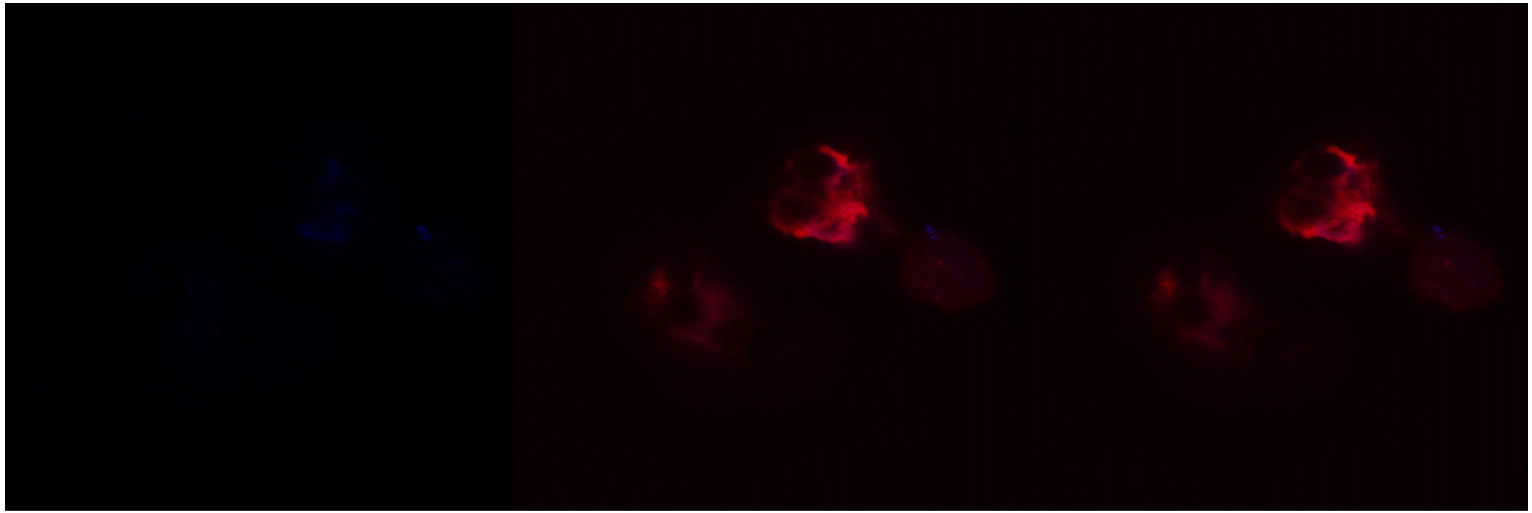
Z-stacking of laser confocal images of RhoB-PEI(1800)-cut-SWNTs in BxPC3 pancreatic cancer cells. The images were taken for DAPI for the nuclei (left) and rhodamine B for the nanotubes (center) stainings after 1 h incubation. The two images are superimposed to show that PEI(1800)-cut-SWNTs can enter the nuclei of BxPC3 pancreatic cancer cells (right).



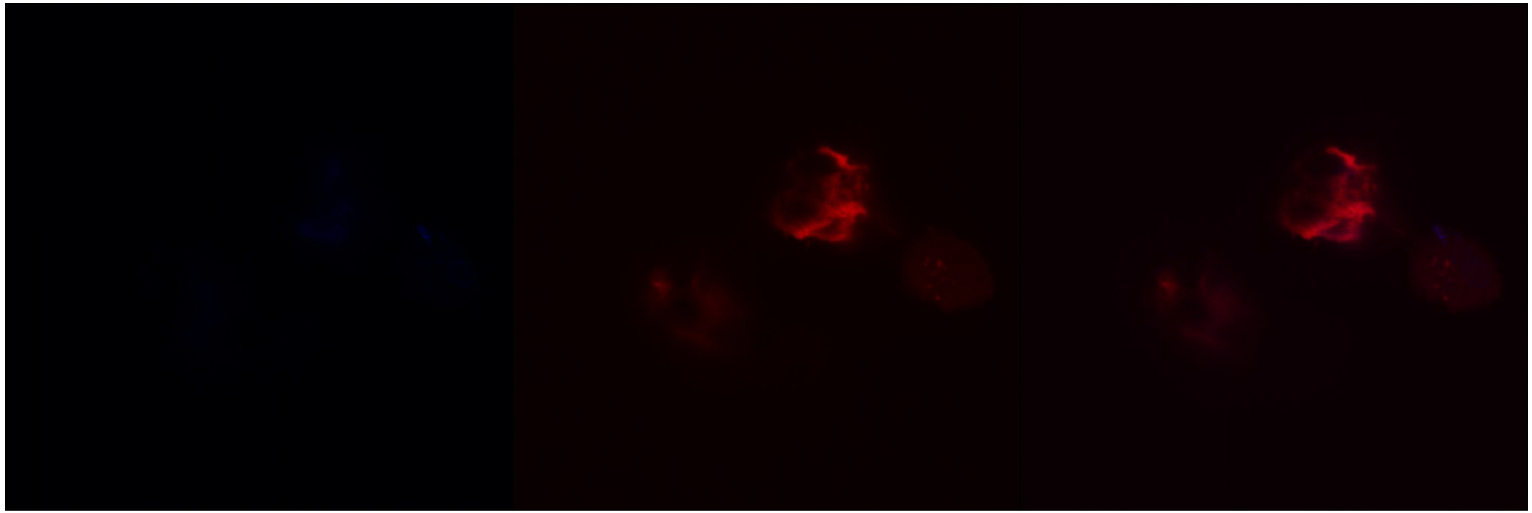
Z-stacking of laser confocal images of RhoB-PEI(1800)-cut-SWNTs in BxPC3 pancreatic cancer cells. The images were taken for DAPI for the nuclei (left) and rhodamine B for the nanotubes (center) stainings after 1 h incubation. The two images are superimposed to show that PEI(1800)-cut-SWNTs can enter the nuclei of BxPC3 pancreatic cancer cells (right).



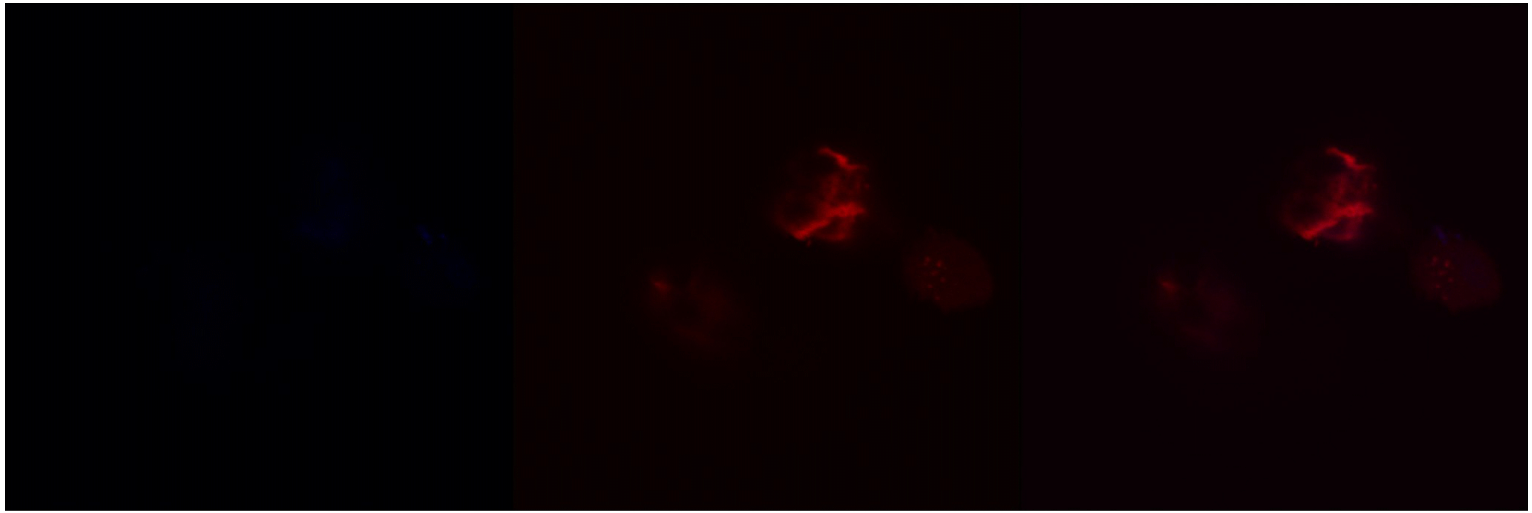
Z-stacking of laser confocal images of RhoB-PEI(1800)-cut-SWNTs in BxPC3 pancreatic cancer cells. The images were taken for DAPI for the nuclei (left) and rhodamine B for the nanotubes (center) stainings after 1 h incubation. The two images are superimposed to show that PEI(1800)-cut-SWNTs can enter the nuclei of BxPC3 pancreatic cancer cells (right).



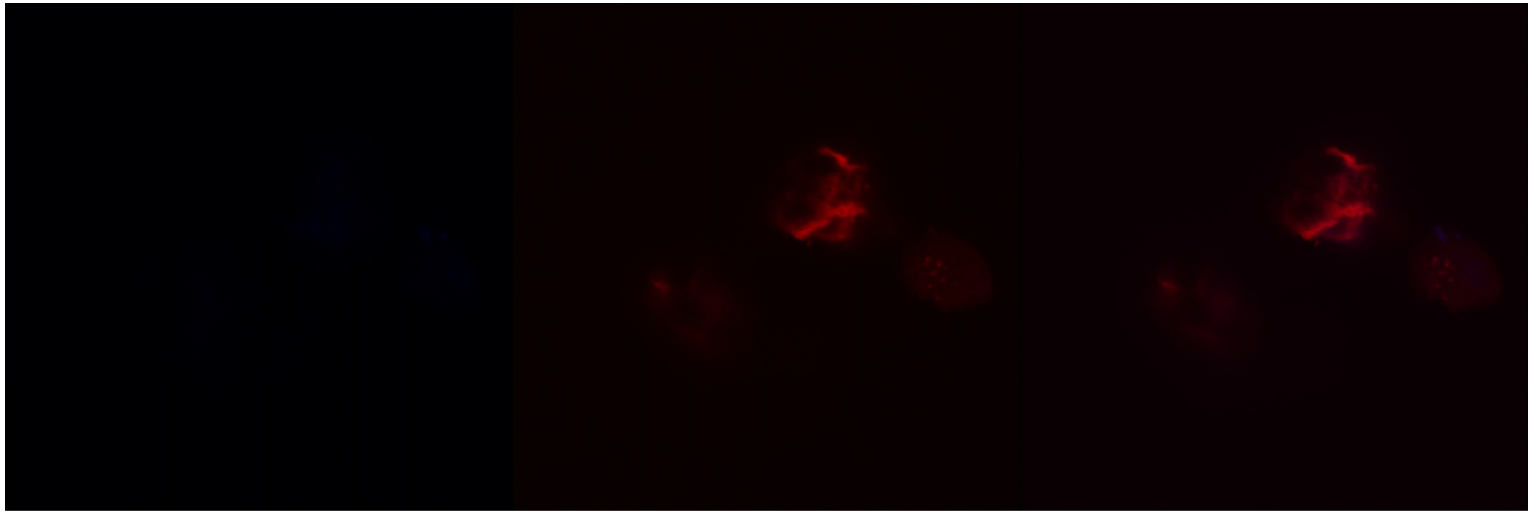
Z-stacking of laser confocal images of RhoB-PEI(1800)-cut-SWNTs in BxPC3 pancreatic cancer cells. The images were taken for DAPI for the nuclei (left) and rhodamine B for the nanotubes (center) stainings after 1 h incubation. The two images are superimposed to show that PEI(1800)-cut-SWNTs can enter the nuclei of BxPC3 pancreatic cancer cells (right).



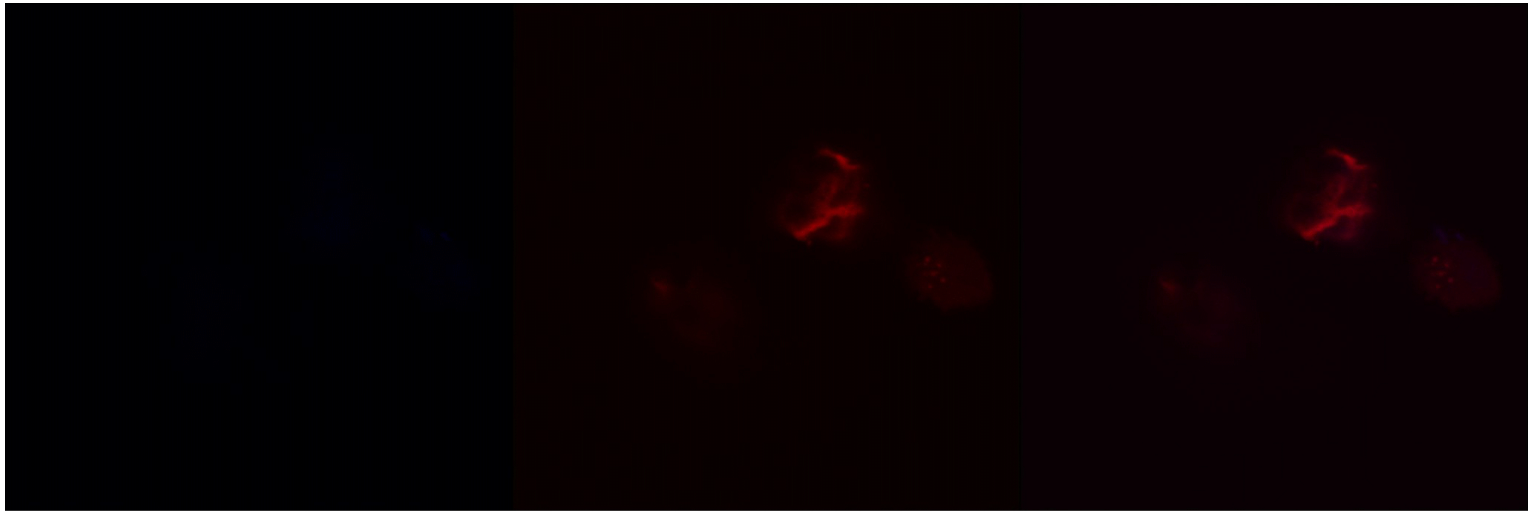
Z-stacking of laser confocal images of RhoB-PEI(1800)-cut-SWNTs in BxPC3 pancreatic cancer cells. The images were taken for DAPI for the nuclei (left) and rhodamine B for the nanotubes (center) stainings after 1 h incubation. The two images are superimposed to show that PEI(1800)-cut-SWNTs can enter the nuclei of BxPC3 pancreatic cancer cells (right).



Z-stacking of laser confocal images of RhoB-PEI(1800)-cut-SWNTs in BxPC3 pancreatic cancer cells. The images were taken for DAPI for the nuclei (left) and rhodamine B for the nanotubes (center) stainings after 1 h incubation. The two images are superimposed to show that PEI(1800)-cut-SWNTs can enter the nuclei of BxPC3 pancreatic cancer cells (right).



Z-stacking of laser confocal images of RhoB-PEI(1800)-cut-SWNTs in BxPC3 pancreatic cancer cells. The images were taken for DAPI for the nuclei (left) and rhodamine B for the nanotubes (center) stainings after 1 h incubation. The two images are superimposed to show that PEI(1800)-cut-SWNTs can enter the nuclei of BxPC3 pancreatic cancer cells (right).



Z-stacking of laser confocal images of RhoB-PEI(1800)-cut-SWNTs in BxPC3 pancreatic cancer cells. The images were taken for DAPI for the nuclei (left) and rhodamine B for the nanotubes (center) stainings after 1 h incubation. The two images are superimposed to show that PEI(1800)-cut-SWNTs can enter the nuclei of BxPC3 pancreatic cancer cells (right).