

Functionalized carbon dots enable simultaneous bone crack detection and drug deposition

A. Shanti Krishna^a, C. Radhakumary^{a*}, Molly Antony^b, and K. Sreenivasan^{a,*}

^a Laboratory for Polymer Analysis, Biomedical Technology Wing, Sree Chitra Tirunal Institute for Medical Sciences & Technology, Thiruvananthapuram-695012, India.

^b Department of Microbiology, Sree Chitra Tirunal Institute for Medical Sciences & Technology, Thiruvananthapuram-695011, India.

*Phone 091- 471 -2520248, Fax. 091- 471- 2341814. Email: sreeni@sctimst.ac.in, radha.changerath@gmail.com

Supporting Information

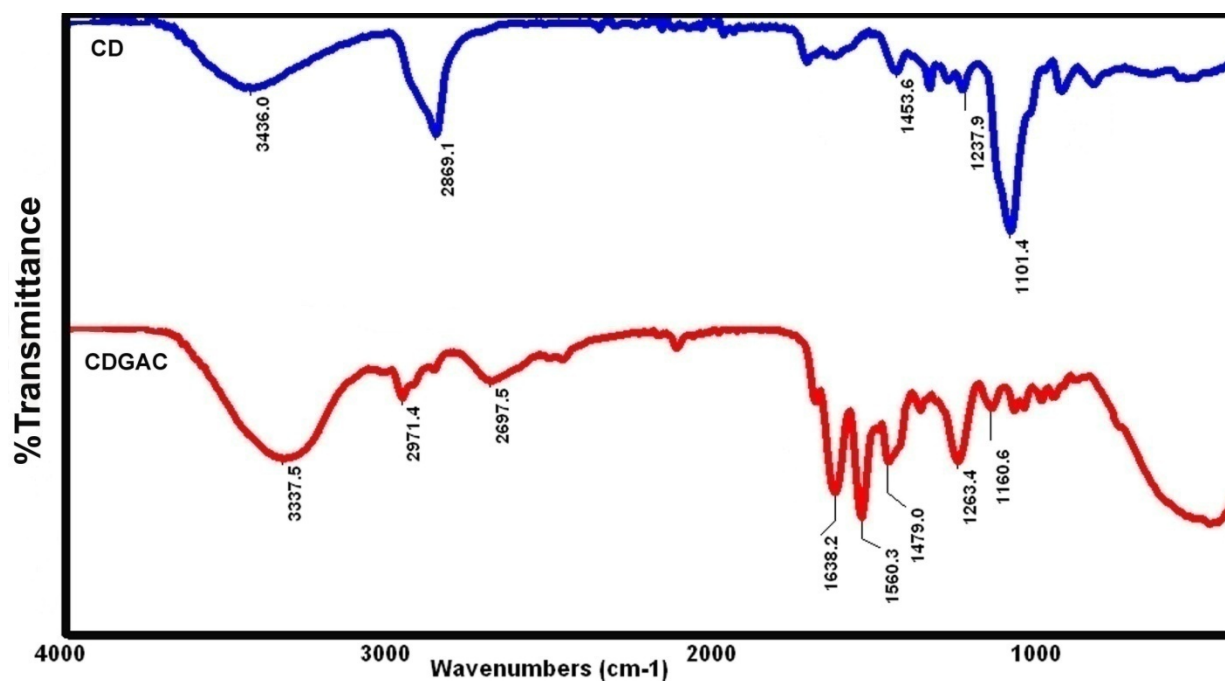


Fig S1. FTIR spectra of CD and CDGAC

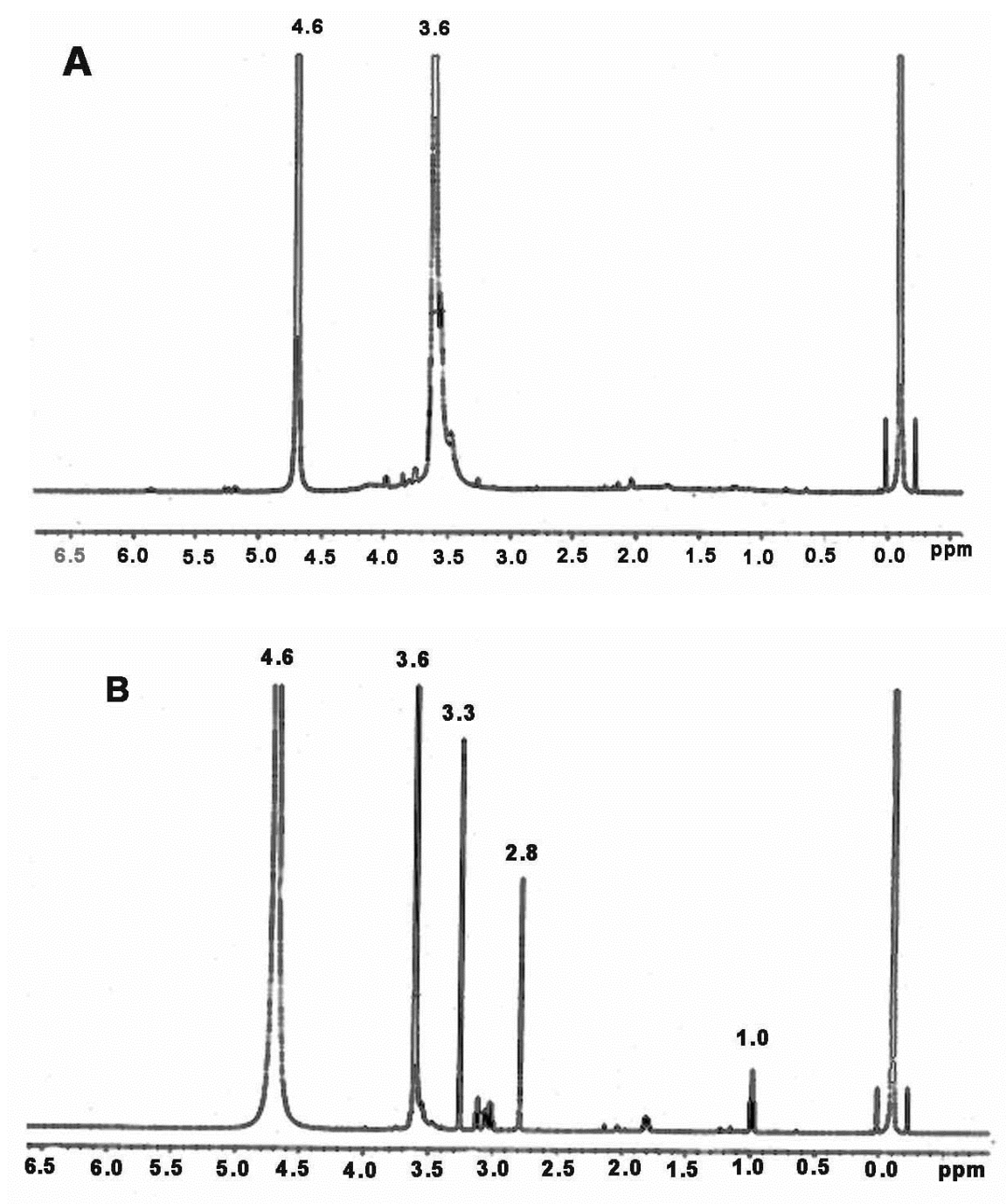


Fig S2. ^1H NMR spectra of A) CD and B) CDGAC

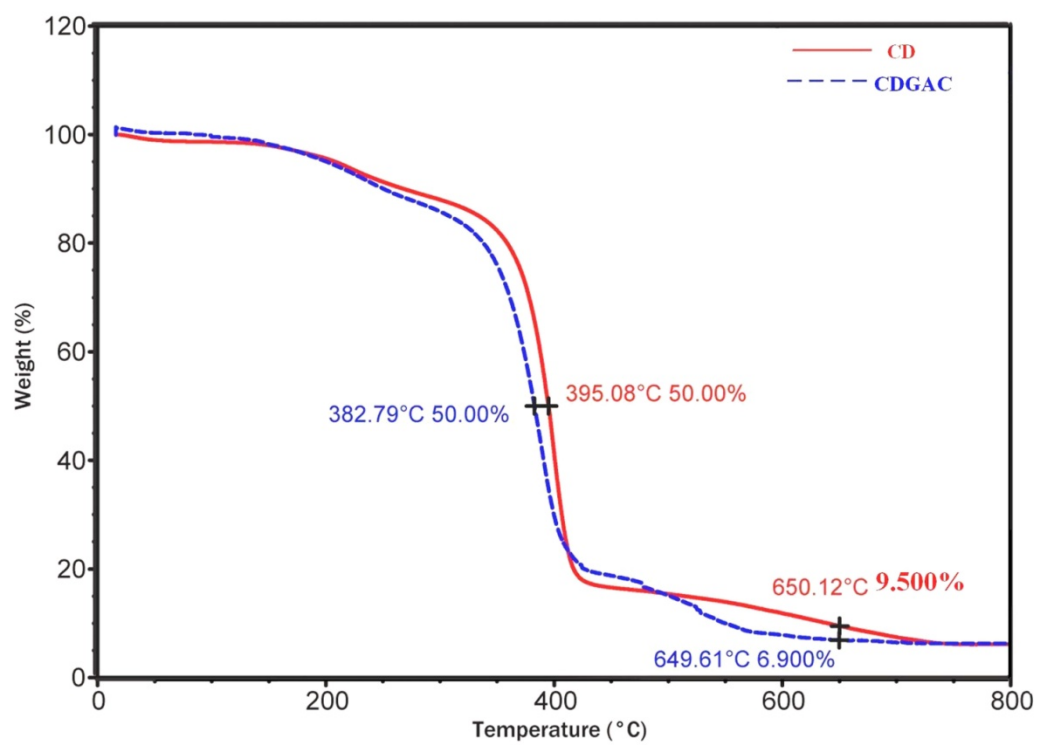


Fig S3. Thermograms of CD and CDGAC

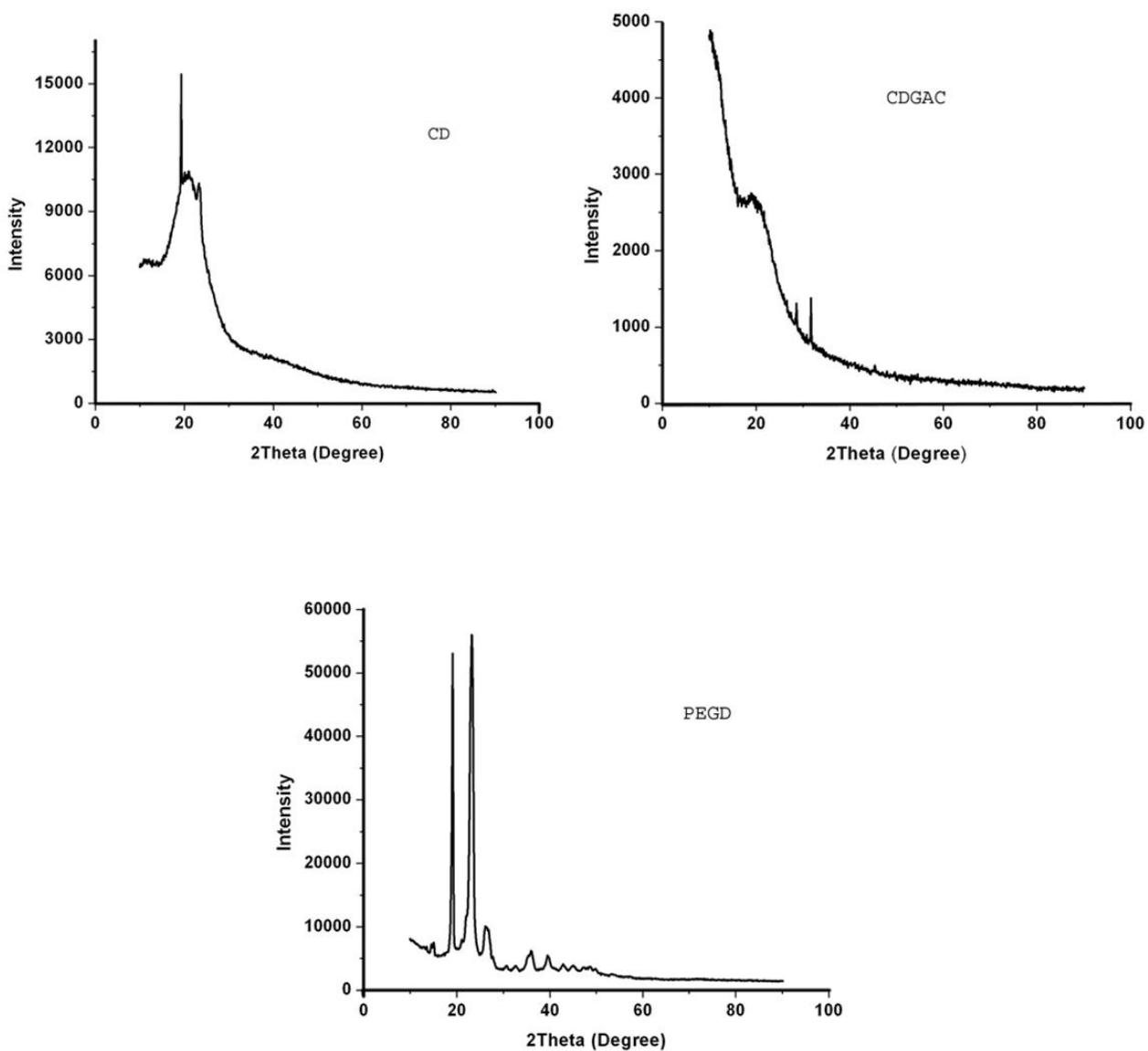


Fig S4. XRD pattern of CD, CDGAC and PEGD

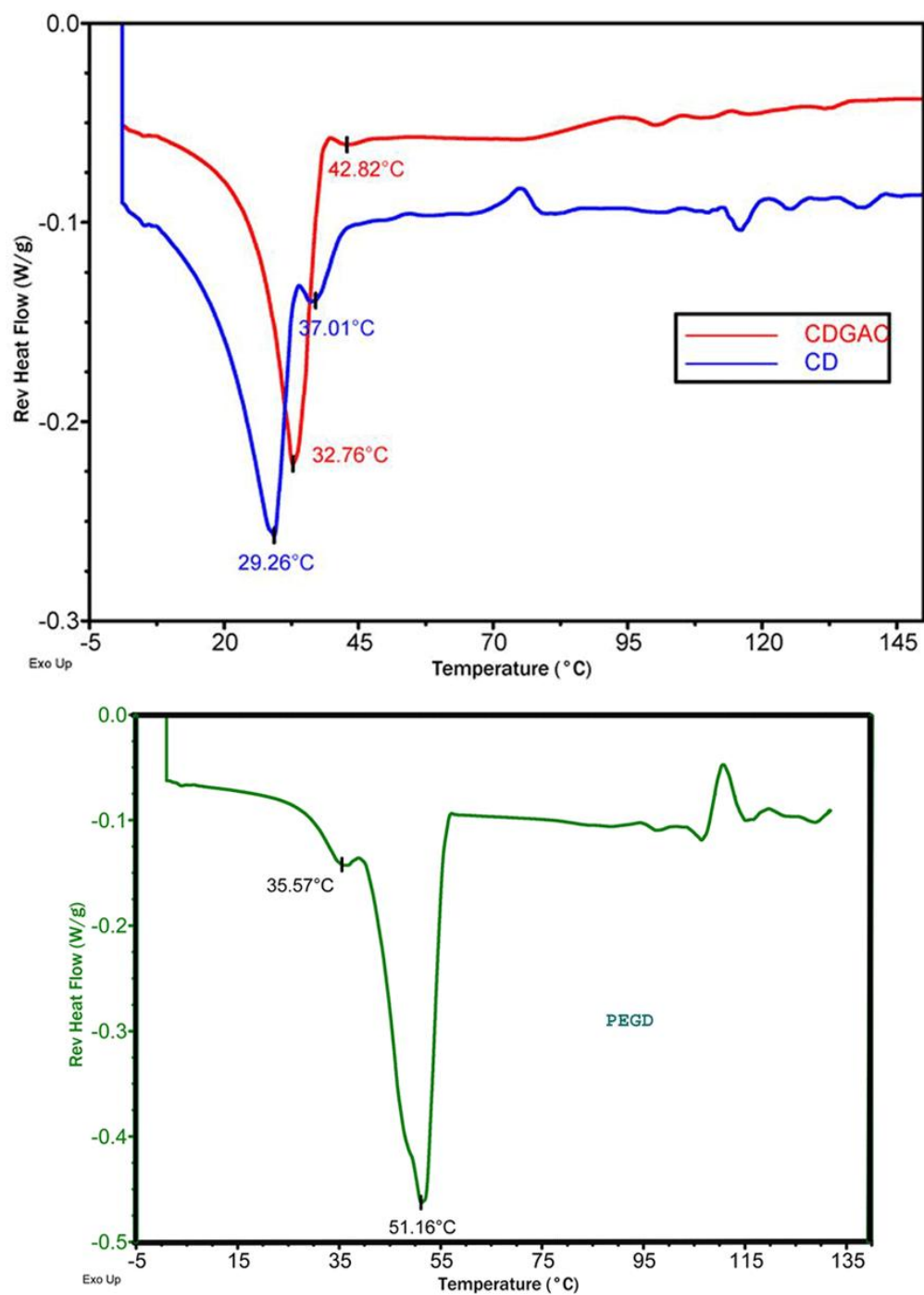


Fig S5. MDSC curve for CD, CDGAC and PEGD

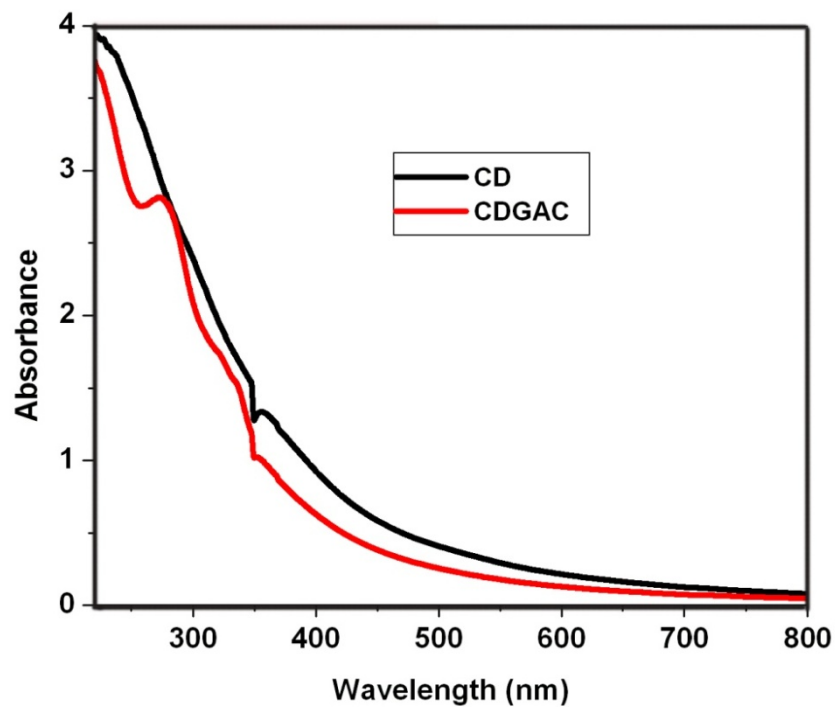


Fig S6. UV-visible absorbance spectra of CD and CDGAC

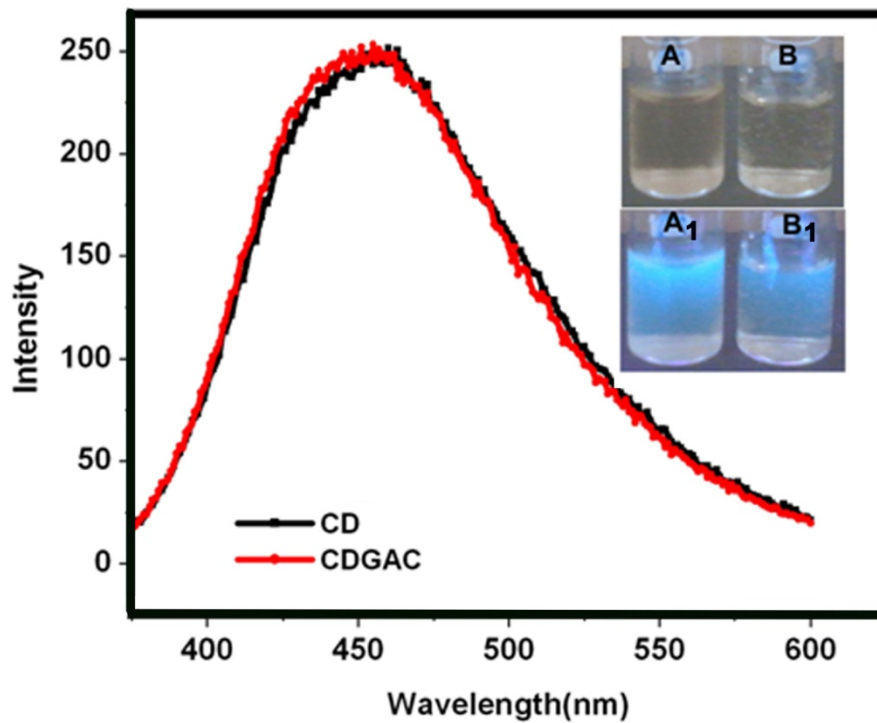


Fig S7. Fluorescence emission spectra of CD and CDGAC [Inset shows photographic images of CD and CDGAC in day light (A&B) and under UV light (A₁& B₁)]

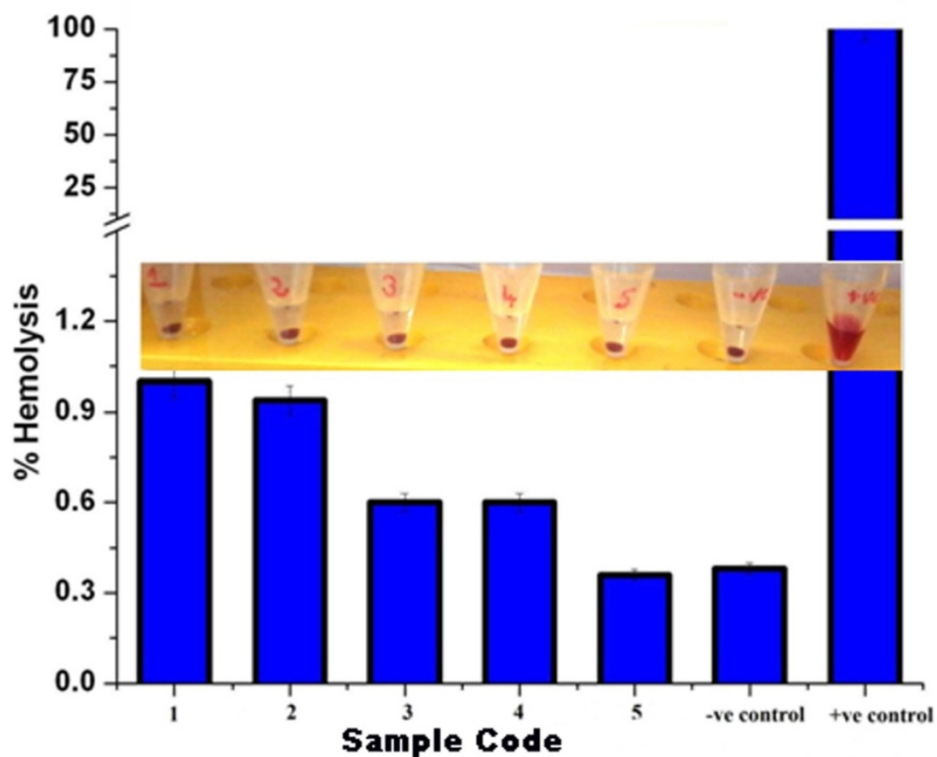


Fig S8. Haemolysis assay for CD and CDGAC (Samples 1, 2, 3, 4 and 5 are CD 1mg/mL, CD 0.5mg/mL, CD 0.25mg/mL, CDGAC 1mg/mL and CDGAC 0.5mg/mL respectively).

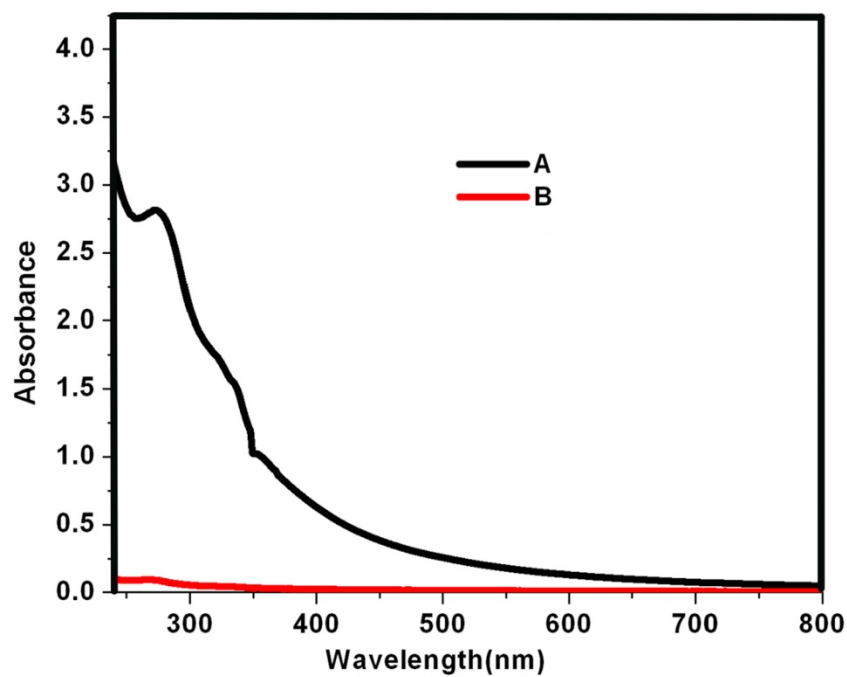


Fig S9. UV-visible absorbance spectra of A) CDGAC B) PBS in which dialysis membrane containing CDGAC was immersed for 24h

Table: S1 Particle sizes of CD and CDGAC obtained from DLS analysis

No	Sample	Particle size (nm)
1	CD	10 ± 3.0
2	CDGAC	137 ± 7.0

Table S2. Antibacterial assay by MIC method.

No	Concentration (µg/mL)	C	CD	CDGAC
1.	50000	-	Scanty growth	-
2.	25000	-	Scanty growth	-
3.	12500	-	Moderate growth	-
4.	6250	-	Heavy growth	-
5.	3125	-	Heavy	-
6.	1560	-	Heavy	-
7.	781	-	Heavy	Moderate growth
8.	390	-	Heavy	Heavy
9.	195	-	Heavy	Heavy
10.	97	-	Heavy	Heavy
11.	48	-	Heavy	Heavy
12.	24	-	Heavy	Heavy
13.	12	-	Heavy	Heavy
14.	6	-	Heavy	Heavy
15.	3	-	Heavy	Heavy
16.	1.5	-	Heavy	Heavy