

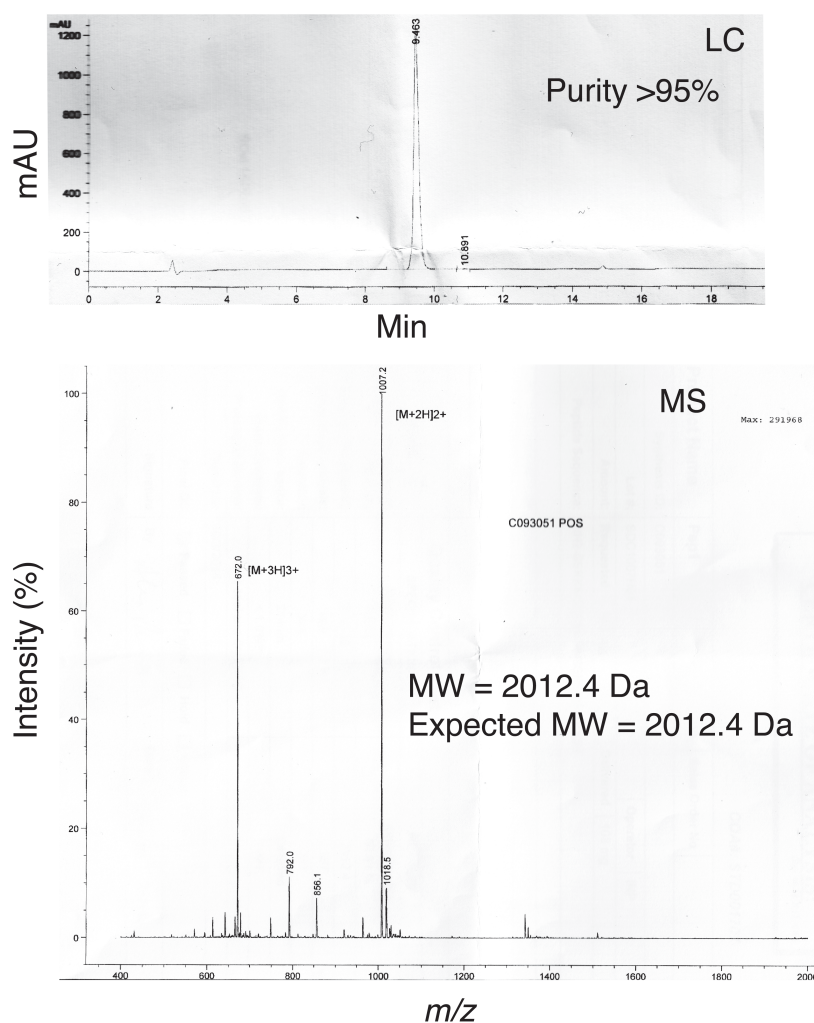
SUPPLEMENTARY DATA

Structure and function of the silicifying peptide R5

¹Senior, L., ¹Crump, M. P., ¹Williams, C., ²Booth, P. J., ¹Mann, S., ¹Perriman, A. W. and ¹Curnow, P.

¹University of Bristol and ²King's College London, UK.

The purity and identity of the commercially-synthesised R5 peptide (SSKKSGSYSGSGSKRRIL) were confirmed by LC-MS analysis carried out by the vendor (Generon). The results are shown in Supplementary Figure 1. The peptide was found to be ≥95% pure and had the expected molecular weight of 2012.4, identical to the molecular weight calculated from the primary sequence.



Supplementary Figure 1. LC-MS analysis of synthesized R5 peptide, carried out by the commercial vendor.