

Supplementary information: Ahmad Khanbeigi *et al.*

Figure S1

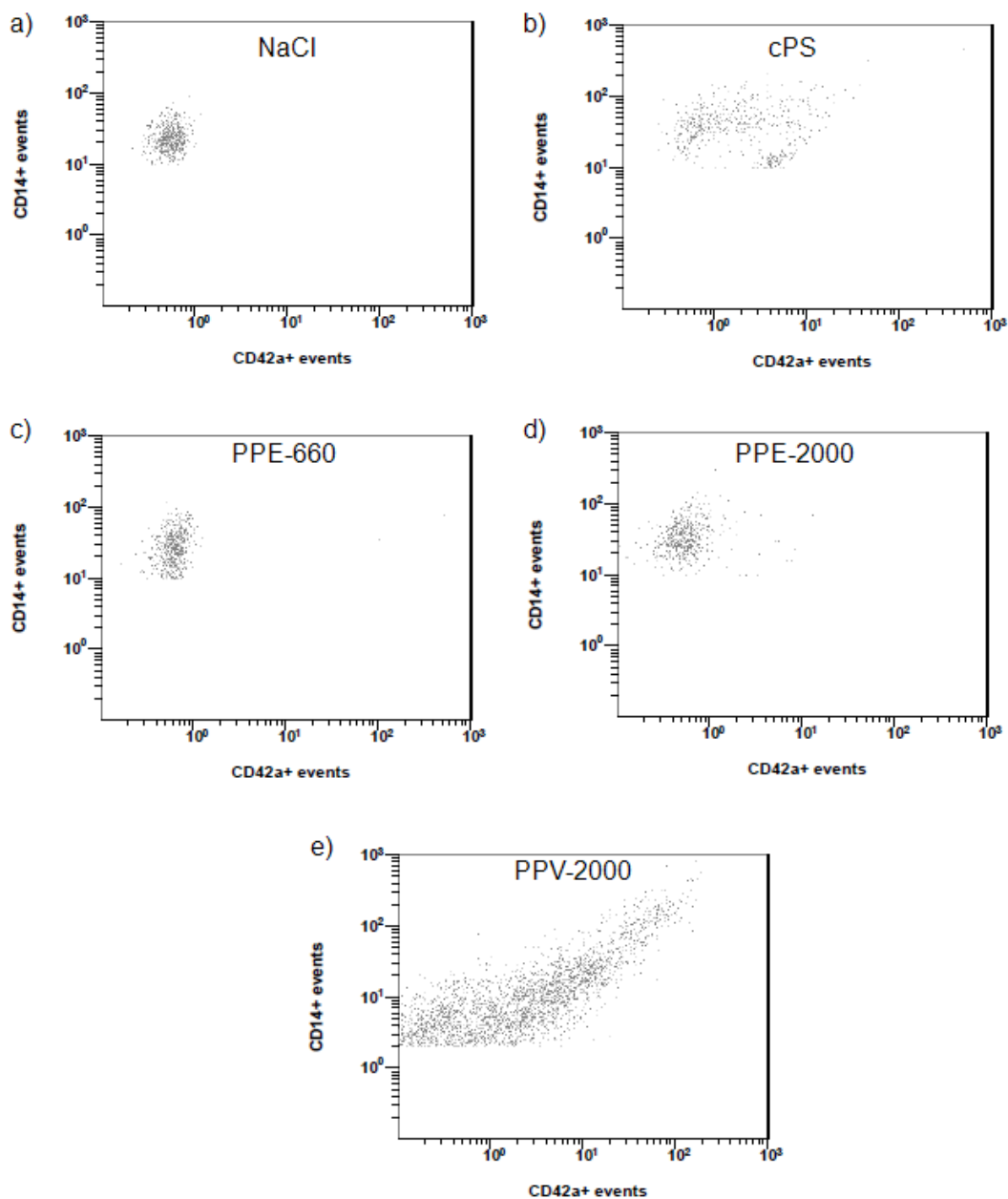


Figure S1. Representative graphs from single blood donors depict platelet monocyte adhesion events whereby monocytes expressing CD14 are counted and the levels of the platelet marker, CD42a are shown following incubation with (a) NaCl, (b) cPS, (c) PPE-660 and (d) PPE-2000 ( $300 \mu\text{g mL}^{-1}$ ). (e) Cell-associated fluorescence following incubation with the red-emitting PPV-2000 nanoparticles shows that the CPN photoluminescence masks the fluorescent labels attached to the CD14 and CD42a antibodies, making it impossible to detect the antibody signal with this method. Due to the broad emission spectrum of the PPV polymer (see Figure 3), fluorescence overlap was observed across the range of most commercially available fluorescently labelled antibodies.