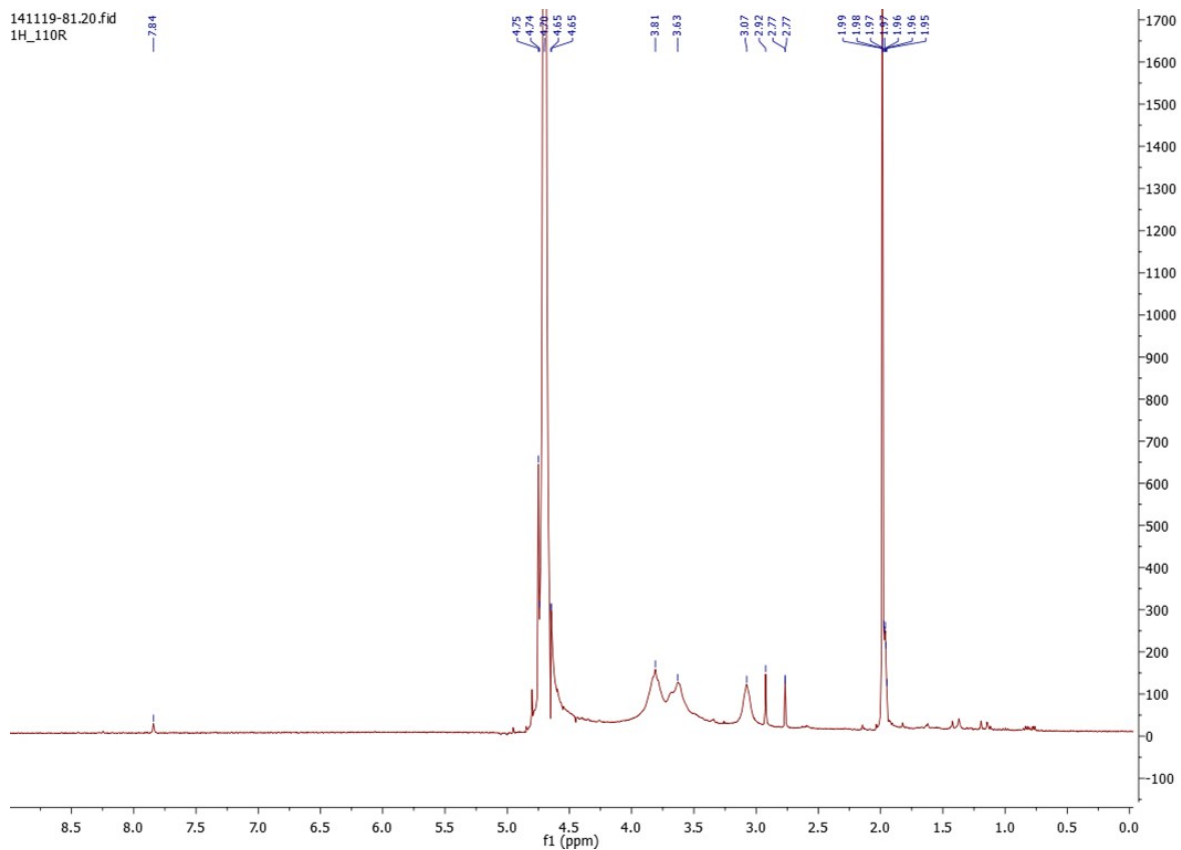


Supplementary Fig. 1 (a) Gel electrophoresis of pGL3/CSAMP (0.1 μ g) complexes at various w/w ratios of pGL3 to CSAMP (gel Lane 1 to 5: Naked pGL3, 1 : 0.5, 1 : 1, 1 : 3 and 1 : 5), (j) protection and release assay. pGL3 was released by adding 1% SDS to pGL3/CSAMP complexes at a w/w ratio of 1 : 5, (Lane 1) pGL3/CSAMP without DNase I, (Lane 2) pGL3/CSAMP complexes with DNase I, (Lane 3) pGL3 with DNase I, and (Lane 4) naked pGL3



Supplementary Fig. 2 ¹H NMR of CSAMP