

Supporting information

Figure S1 SEM images of the H2-BCz xerogel from (a) chlorobenzene/ethanol (v/v=1/2), (b) xylene/ethanol (v/v=1/2) and (c) cyclohexane/n-hexane (v/v=1/2). The concentration is 5 mg/ml.

Figure S2 SEM images of the H2-BCz xerogel from (a) toluene/methanol (v/v=1/1), (b) toluene/ethanol (v/v=1/2), (c) toluene/1-propanol (v/v=1/2), (d) toluene/1-butanol (v/v=1/2), (e) toluene/1-pentanol (v/v=1/3), (f) toluene/1-hexanol (v/v=1/3), (g) toluene/acetic acid (v/v=1/4) and (h) toluene/n-hexane (v/v=1/1). The concentration is 5 mg/ml.

Figure S1

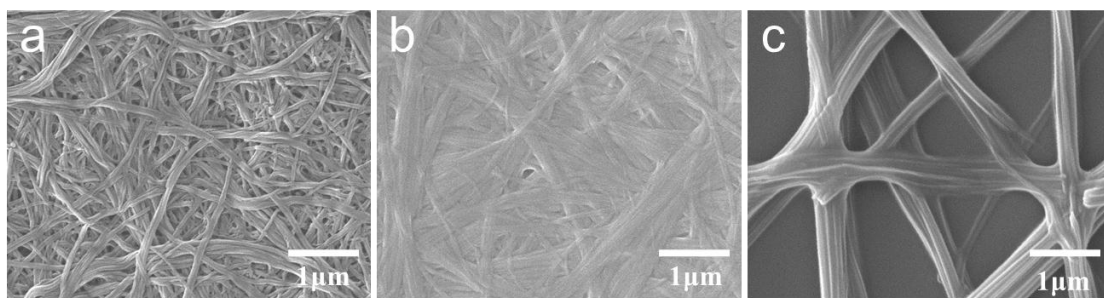


Figure 2

