

Electronic Supplementary Information for
Sulfur-incorporated carbon quantum dots with a strong long-wavelength
absorption band

Woosung Kwon^a, Jongchul Lim^b, Jinuk Lee^a, Taiho Park^{b*}, and Shi-Woo Rhee^{a*}

^aSystem on a Chip Chemical Process Research Center,
Department of Chemical Engineering, Pohang University of Science and Technology
(POSTECH), Pohang 790-784, South Korea;
E-mail: srhee@postech.ac.kr ; Tel: +82-54-279-2265; Fax: 82-54-279-8619

^bPolymer Chemistry & Electronics Laboratory,
Department of Chemical Engineering, Pohang University of Science and Technology
(POSTECH), Pohang 790-784, South Korea;
E-mail: taihopark@postech.ac.kr ; Tel: +82-54-279-2394; Fax: 82-54-279-5295

*Corresponding author. E-mail: taihopark@postech.ac.kr, srhee@postech.ac.kr

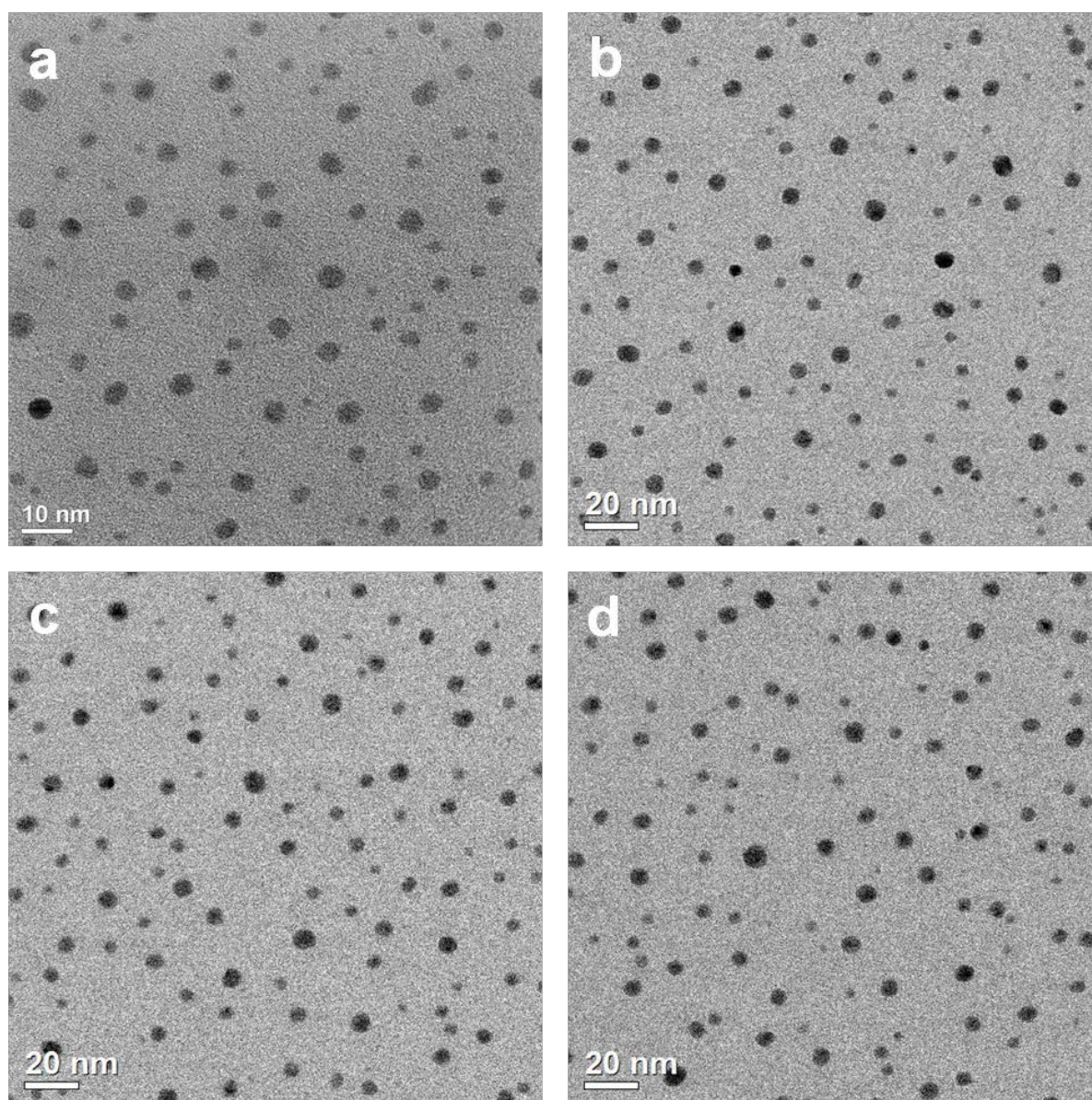


Figure S1. Additional TEM images of a series of the S-CQDs: (a) bare, (b) S1, (c) S2, and (d) S3.

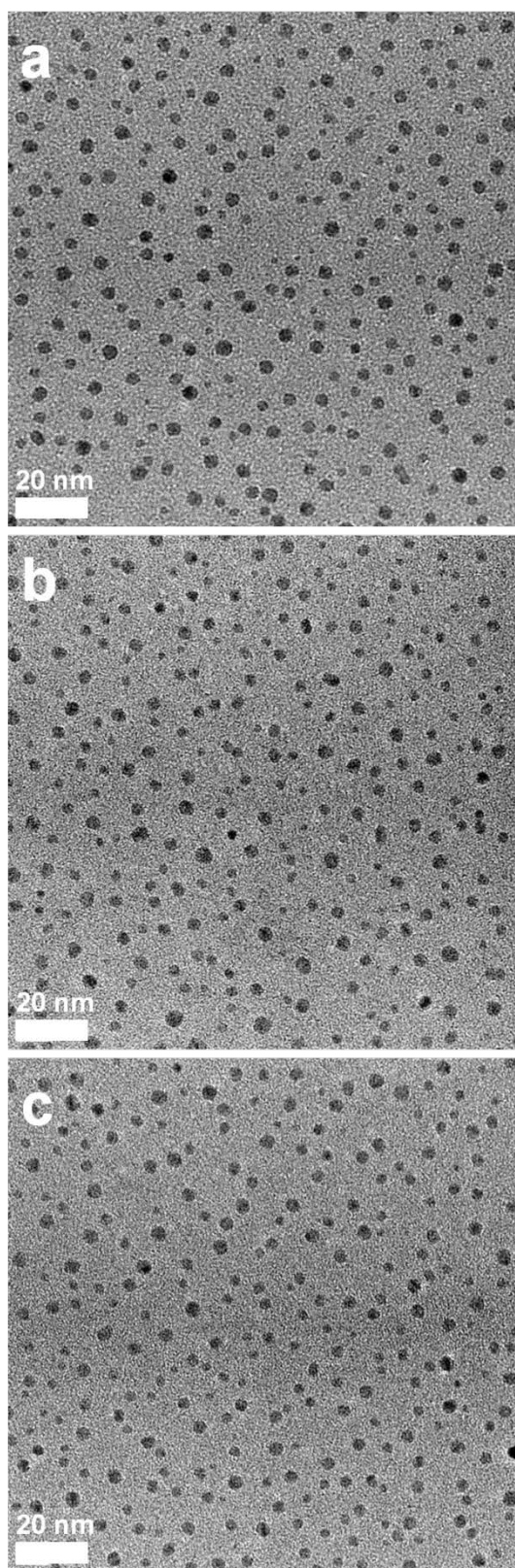


Figure S2. Additional low-magnification TEM images of a series of the S-CQDs: (a) S1, (b) S2, and (c) S3.

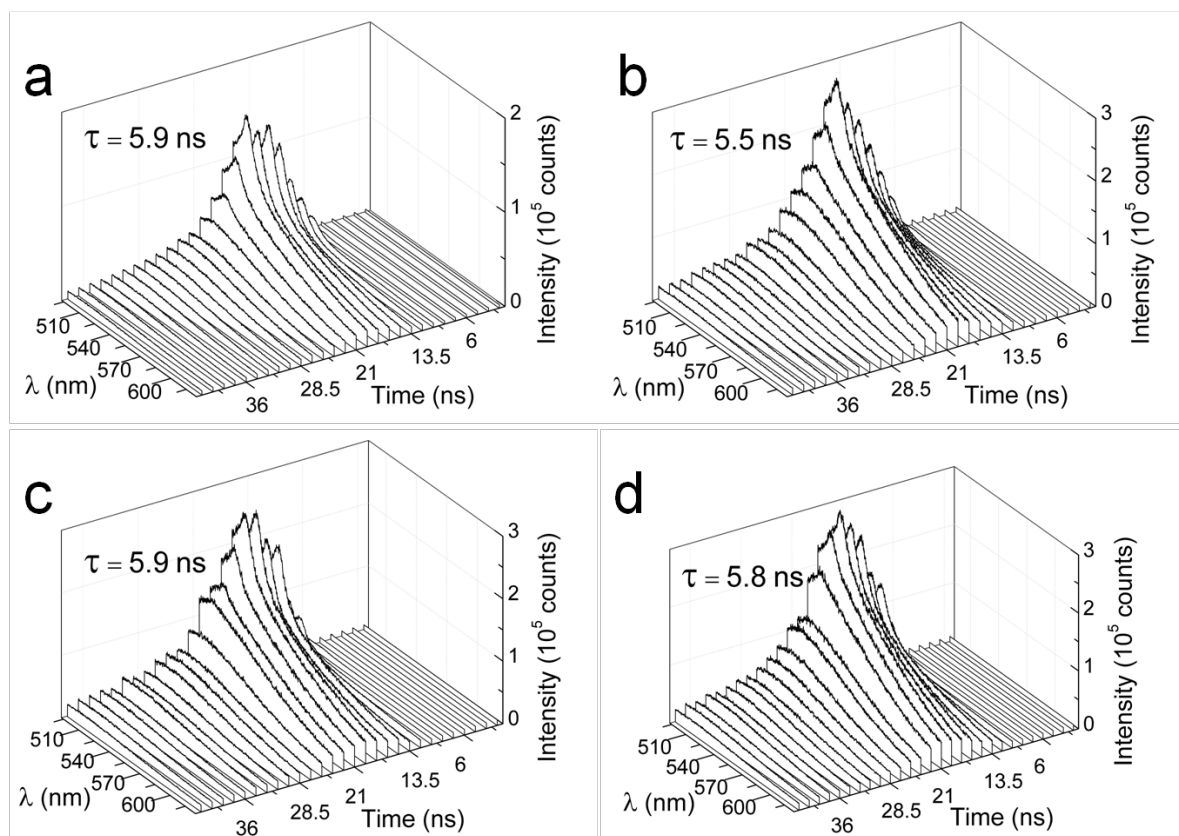


Figure S3. Time-resolved emission decay spectra (excitation wavelength = 460 nm) of a series of the S-CQDs: (a) bare, (b) S1, (c) S2, and (d) S3. The time interval between each emission spectrum is 1.5 ns.

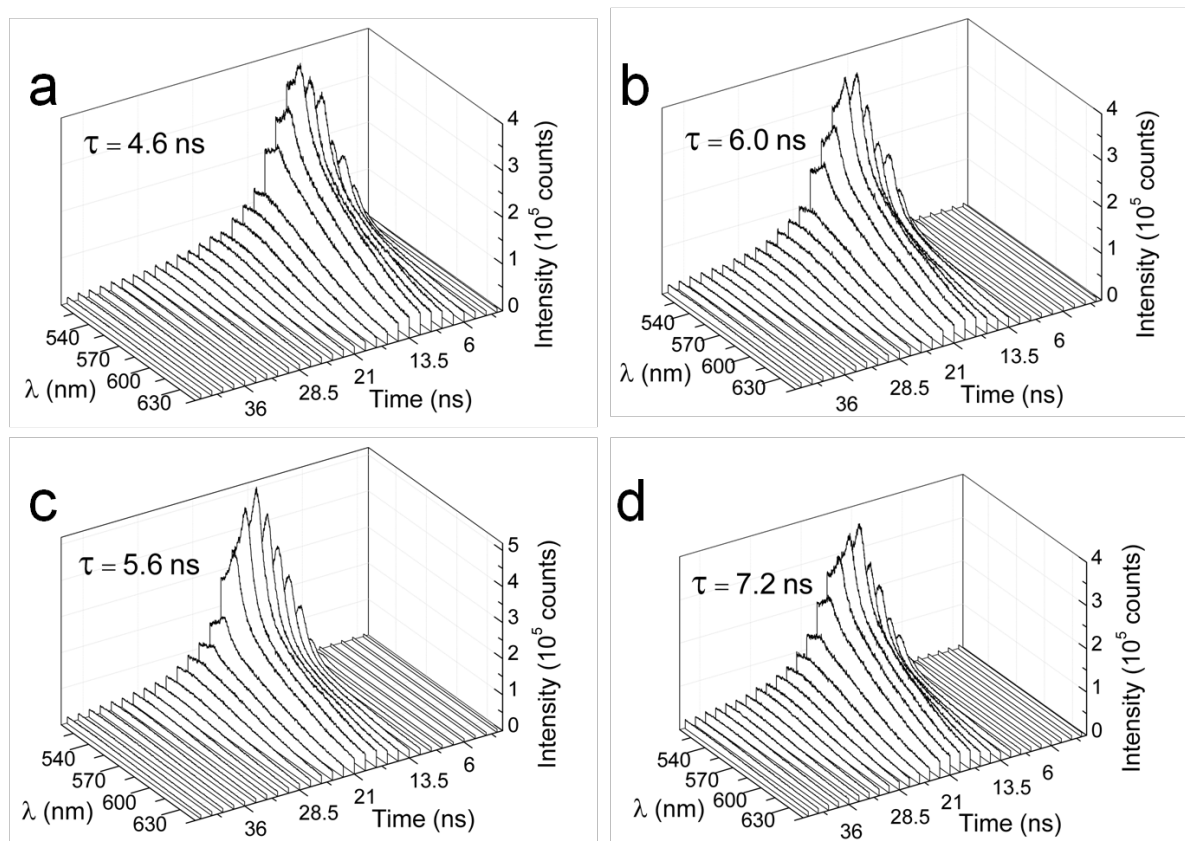


Figure S4. Time-resolved emission decay spectra (excitation wavelength = 480 nm) of a series of the S-CQDs: (a) bare, (b) S1, (c) S2, and (d) S3. The time interval between each emission spectrum is 1.5 ns.

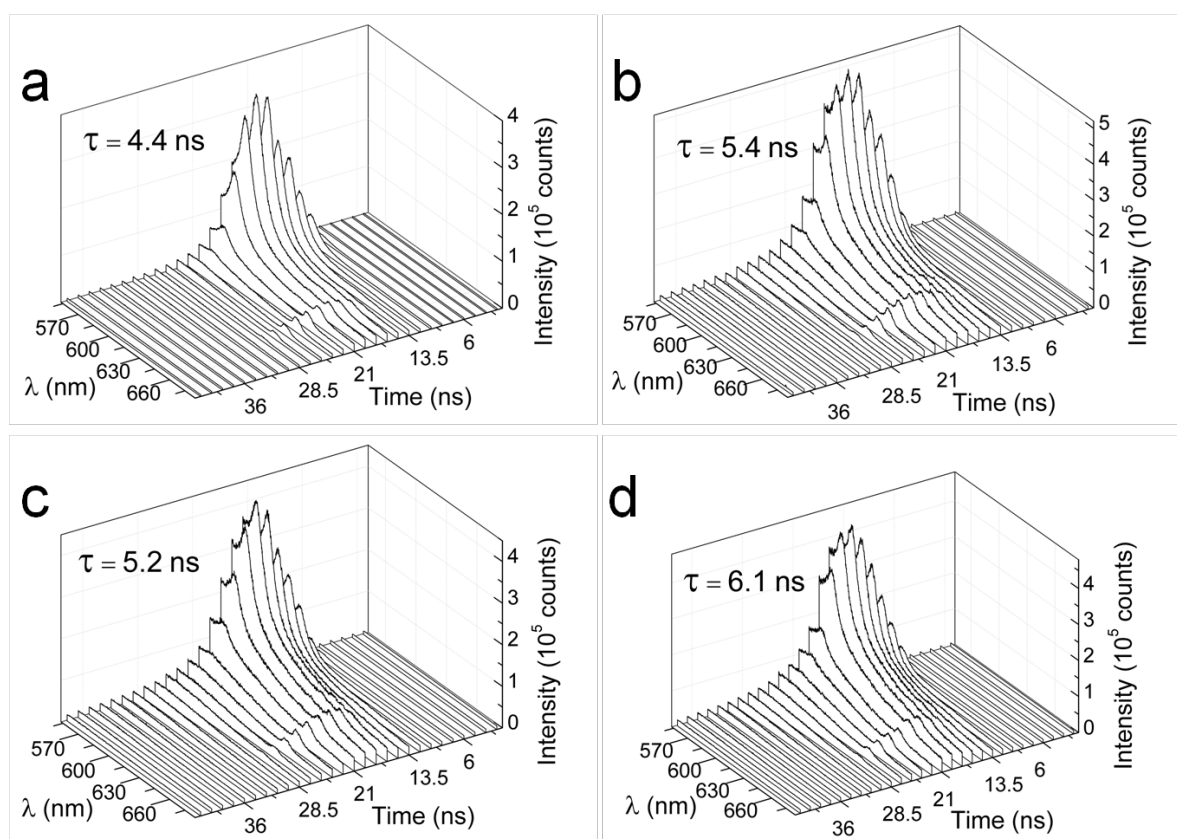


Figure S5. Time-resolved emission decay spectra (excitation wavelength = 520 nm) of a series of the S-CQDs: (a) bare, (b) S1, (c) S2, and (d) S3. The time interval between each emission spectrum is 1.5 ns.