

Supplementary Material to the Manuscript “Filling the carbon nanotubes with magnetic particles”

by the S. Kopyl *et al.*

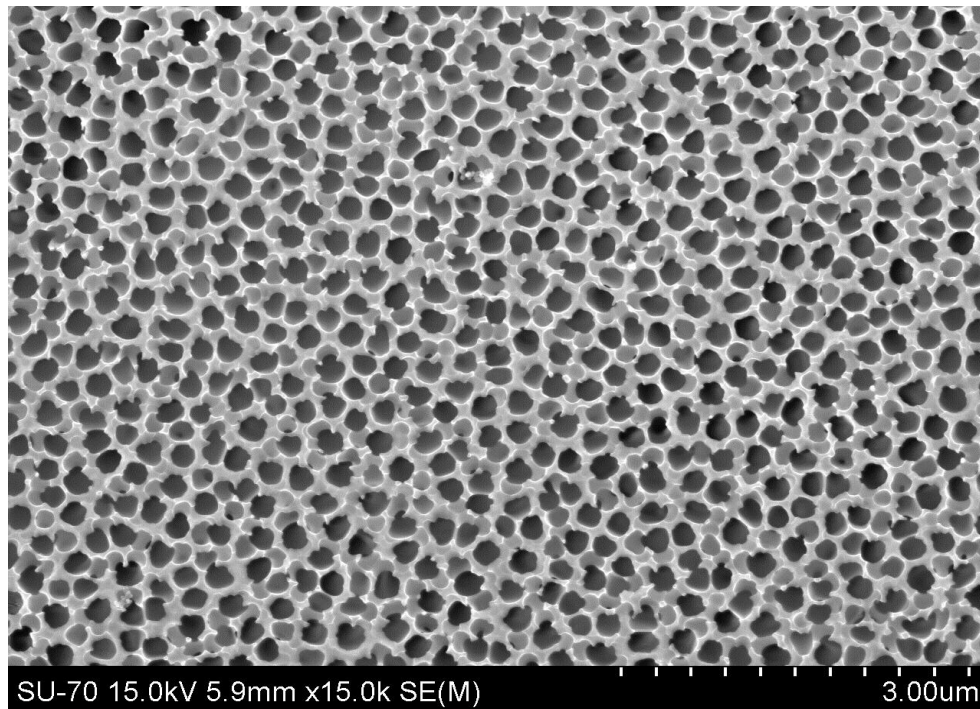


Figure S1. SEM micrograph of the alumina (Al_2O_3) membrane.

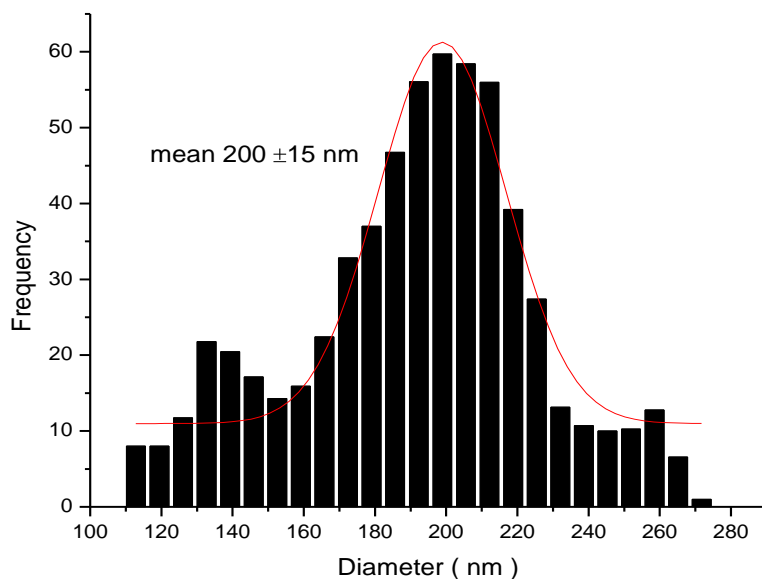


Figure S2. Pore size distribution for the alumina (Al_2O_3) membrane calculated from SEM image analysis.

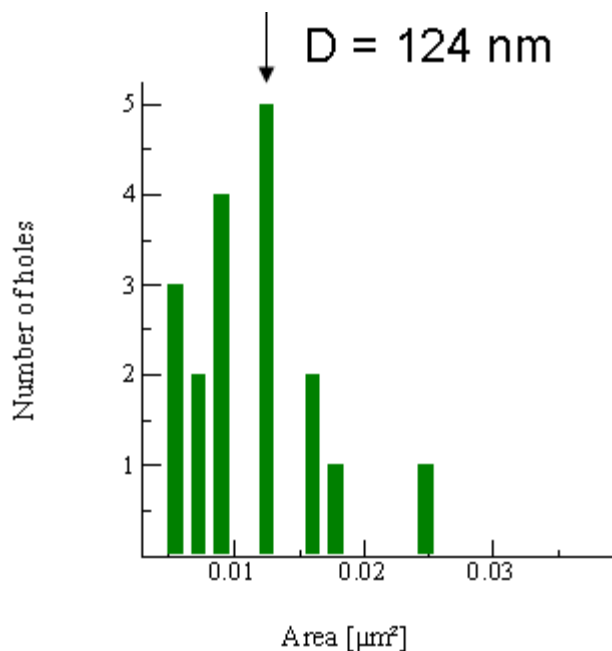


Figure S3. Pore size distribution for the alumina (Al_2O_3) membrane with carbon nanotubes calculated from AFM image analysis.

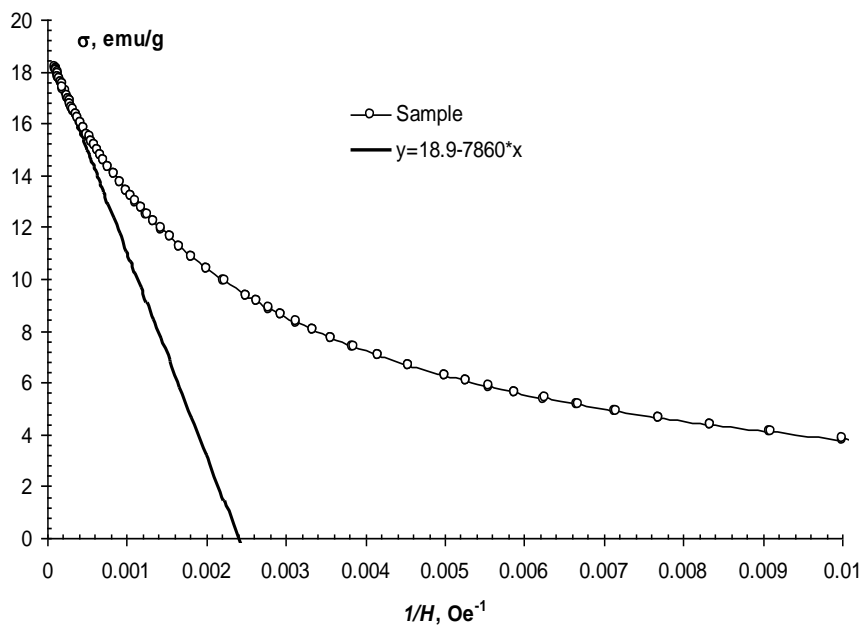


Figure S4. Magnetization curve of CNTs filled with Fe_3O_4 in the coordinates $M - 1/H$.

The concentration the nanoparticles in the sample, n_{np} and the magnetic moment of a nanoparticle μ_{np} were estimated after approximating the experimental dependence of the magnetization ($y=M$, $x=1/H$) by a straight line at high magnetic field.