

Supporting Information

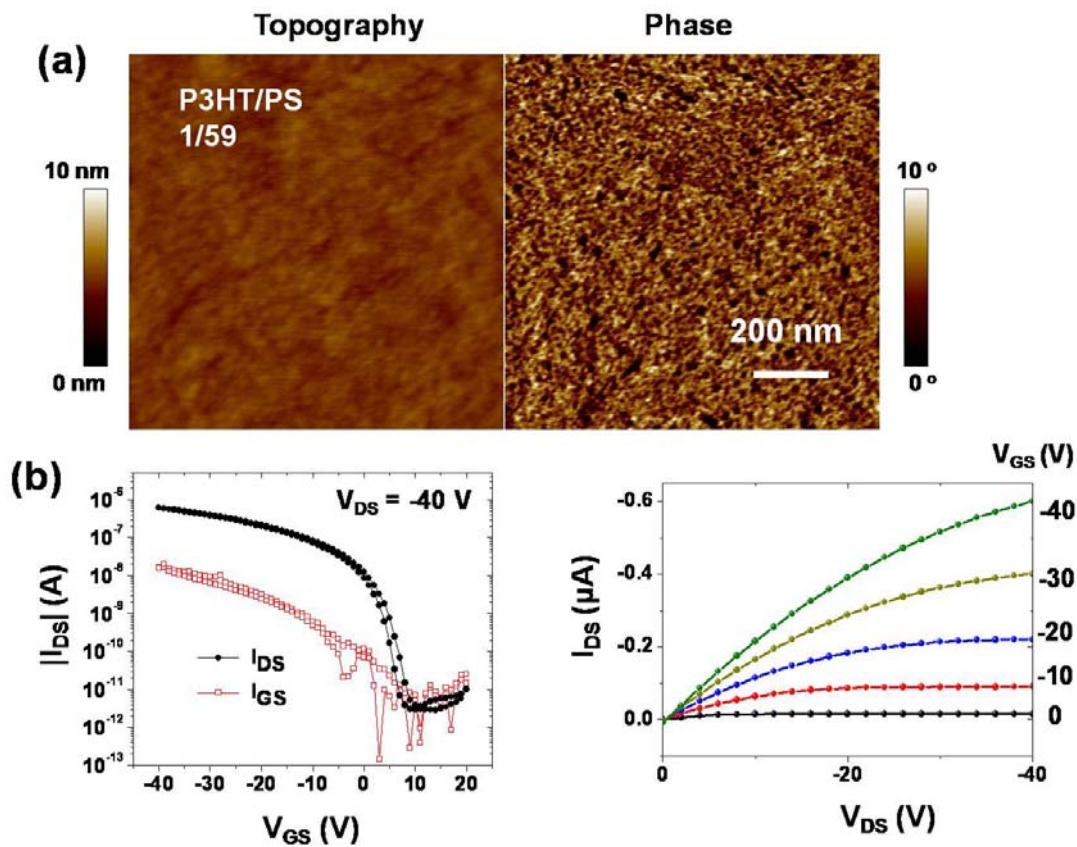


Figure S1. (a) AFM images of P3HT/PS blend films prepared from solution containing 6 wt% P3HT/PS (1/59 w/w). (b) Transfer (left) and output (right) characteristics of field-effect transistors based on P3HT/PS blends.

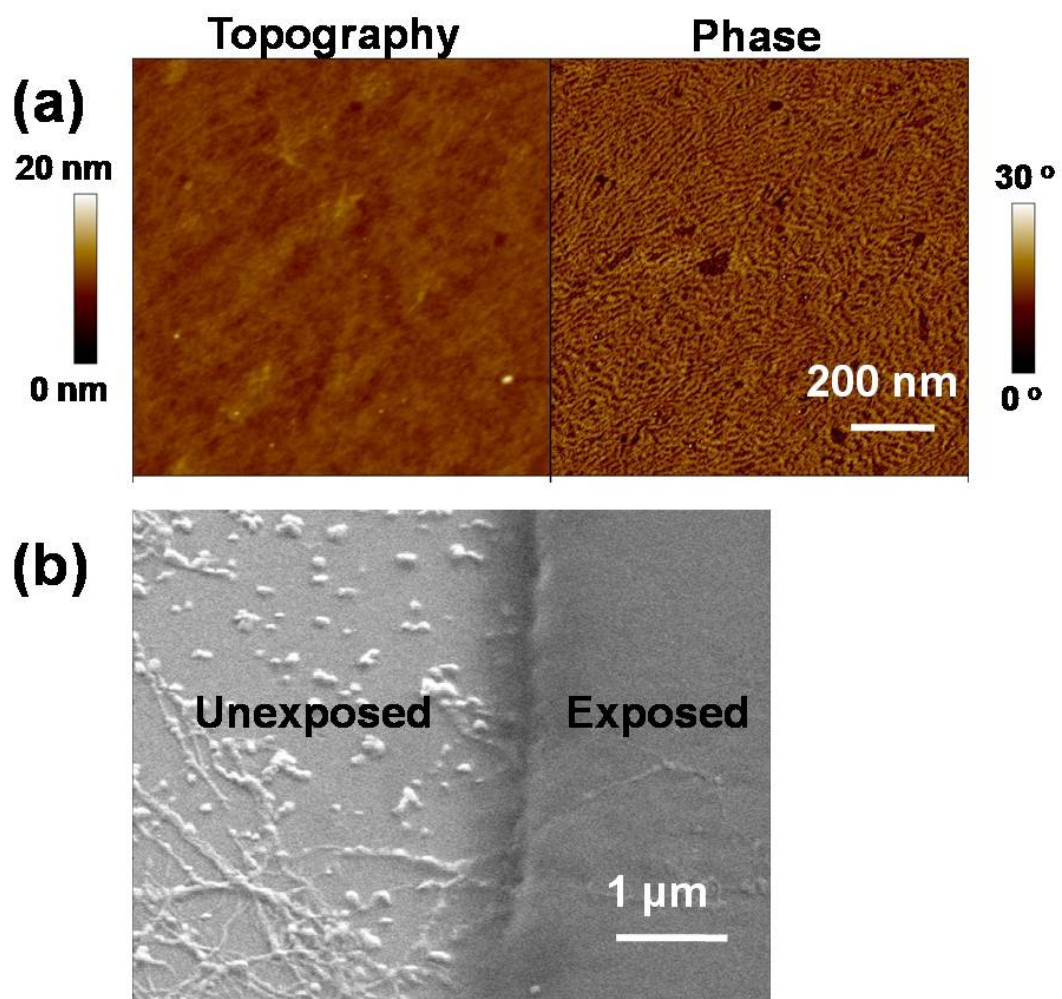


Figure S2. (a) AFM images of P3HT/SU-8 photoresist blend films. (b) SEM images of P3HT/SU-8 photoresist blend films after UV exposure and development using cyclohexanone.