

Table S1 The detailed parameter values of molecular weight A, bulk density  $\rho$ , number of electrons per molecule Z, excitation energy E and the calculated electron penetration depth L.

	A	$\rho$ (g/cm <sup>3</sup> )	Z	E (KeV)	n	L(Å)
YSO:Ce	285.8942	4.780	132	5	3.1166	1118.51
YAG:Ce	593.6180	4.552	278	5	4.1203	228.1

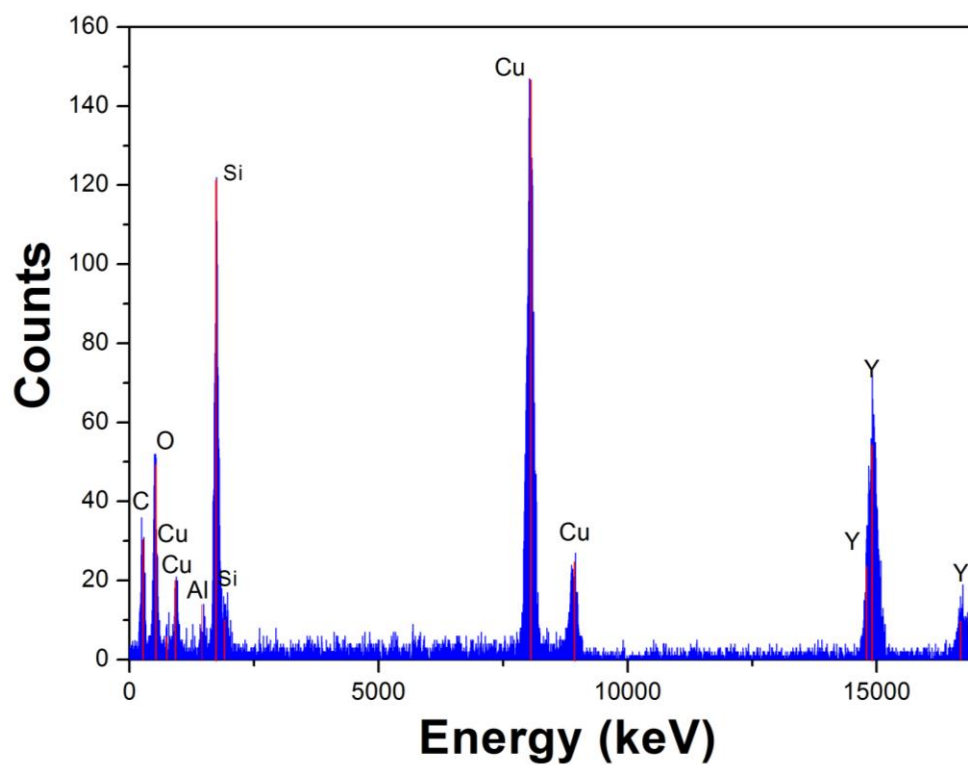


Figure S1 The EDX analysis of YSO:Ce/YAG:Ce composite phosphors.