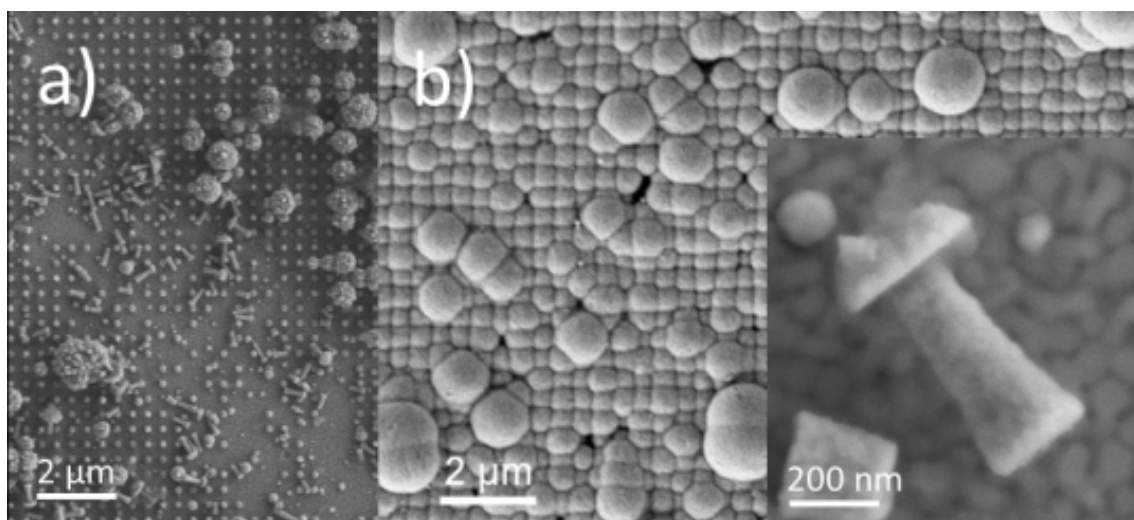


## Supplementary information

### Ordered Arrays of Ferromagnetic, Compositionally-Graded $\text{Cu}_{1-x}\text{Ni}_x$ Alloy Nanopillars Prepared by Template-Assisted Electrodeposition

By A. Varea, S. Pané, S. Gerstl, M. A. Zeeshan, B. Özkale, B. J. Nelson, S. Suriñach, M. D. Baró, J. Nogués, J. Sort, and E. Pellicer



**Figure S1:** In-plane SEM image of **a)** Cu-Ni nanopillars electrodeposited directly onto 15-nm thick upper Ti layer. As shown, most of the nanostructures are detached from the substrate after resist stripping due to the poor adherence to Ti; **b)** Overgrown nanopillars. Inset: side-view of one of these overplated entities featuring a mushroom-like appearance.