

Supporting information

High efficiency P3HT:PCBM solar cells with an inserted PCBM layer

Dan Chi,^{a,b} Shengchun Qu,^a Zhanguo Wang^{*a} and Jizheng Wang^{*b}

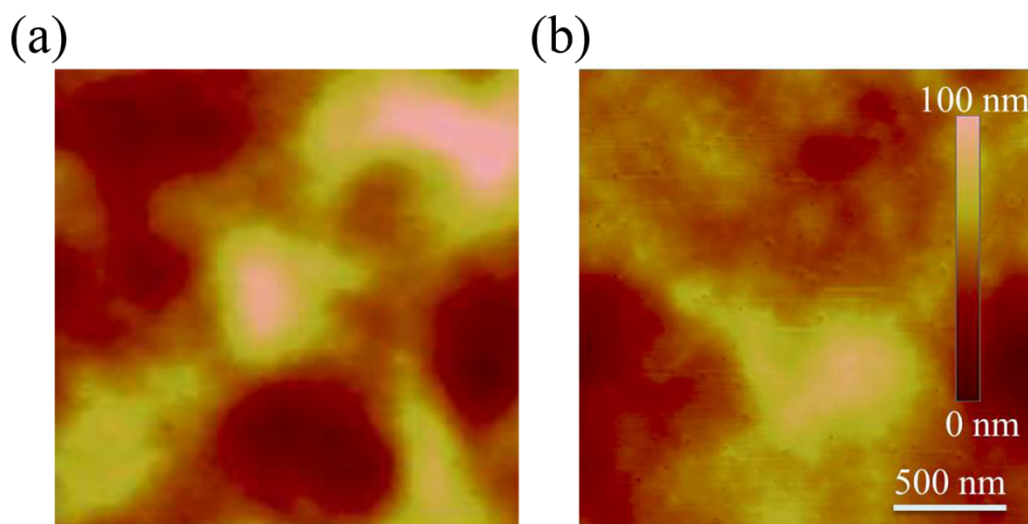


Fig. S1. Topography AFM images of P3HT:PCBM films (a) without PCBM buffer layer and (b) with 15 nm PCBM buffer layer. (a) shows a surface roughness of 16.1 nm, and (b) shows a surface roughness of 9.9 nm.