

Supporting Information:

Interpenetrating Morphology based on Highly Crystalline Small Molecule and PCBM Blends

Feng Liu, Lei Zhang, Yue Zhang, Stefan C. B. Mannsfeld, Thomas P. Russell*,
Alejandro L. Briseno*

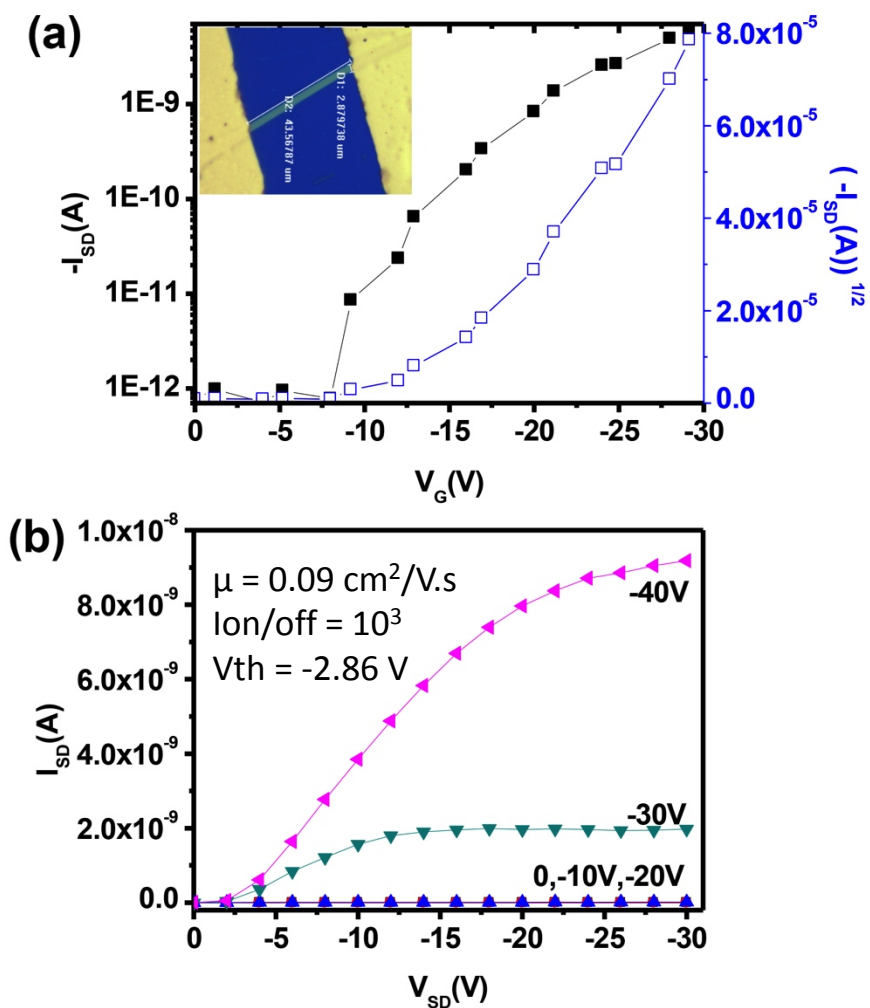


Figure S1. Single-crystal OFET device from a discrete TIPS-DBC nanowire.

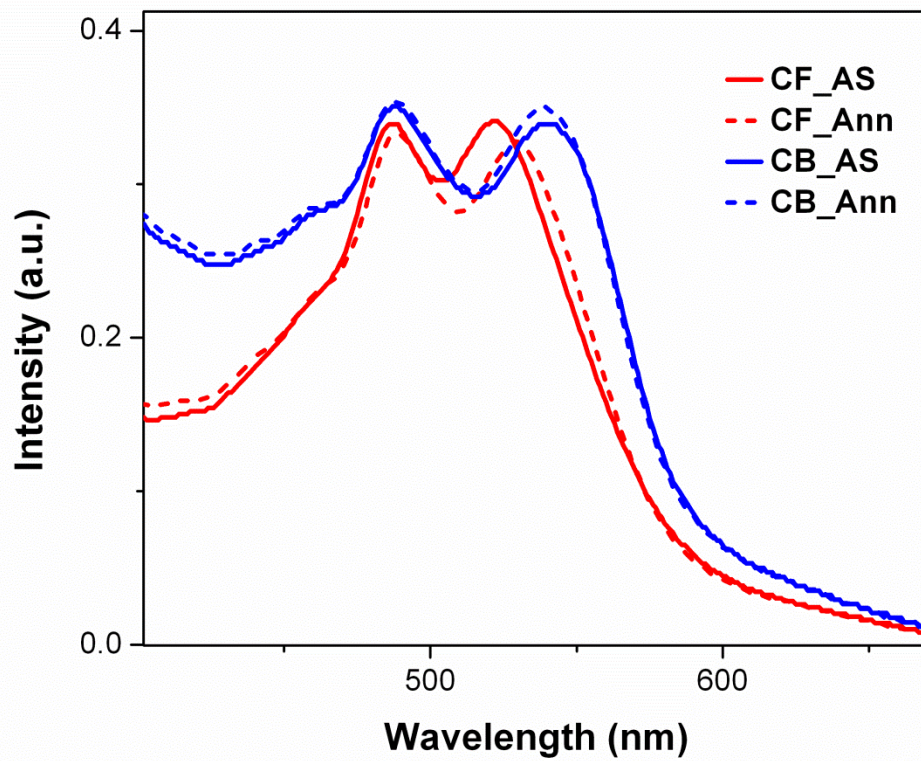


Figure S2. Enlarged absorption profiles of TIPS-DBC:PCBM blends.

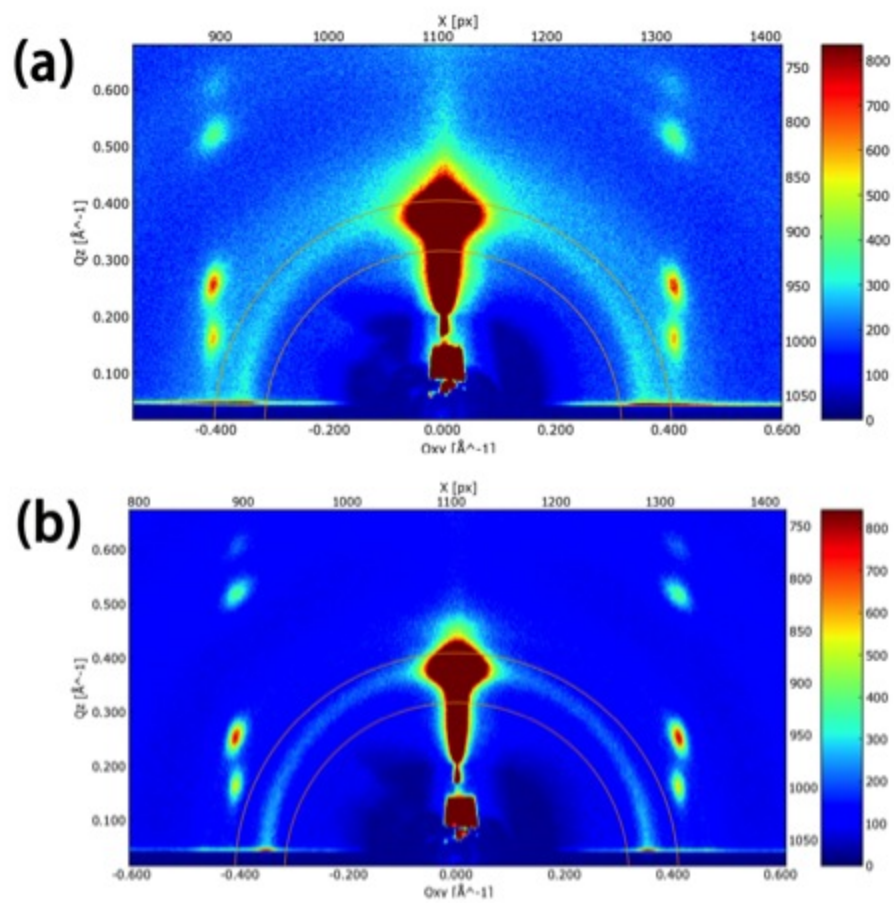
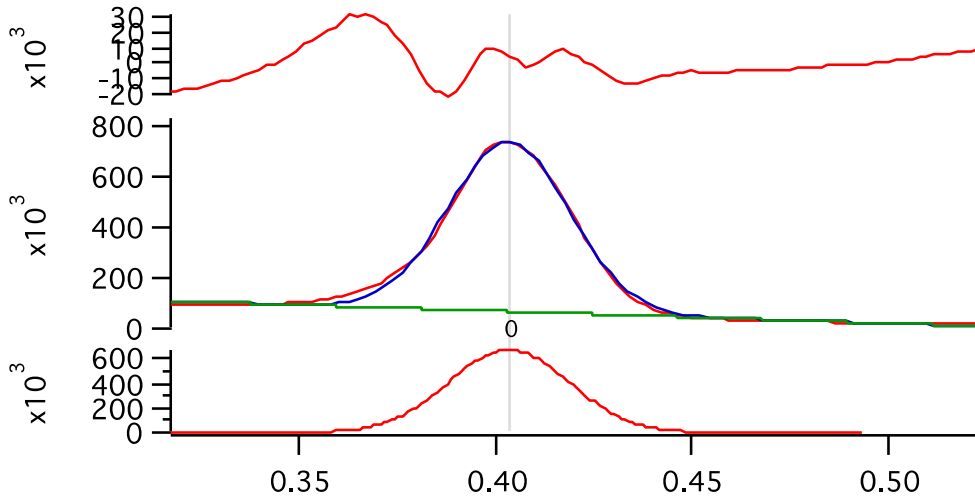


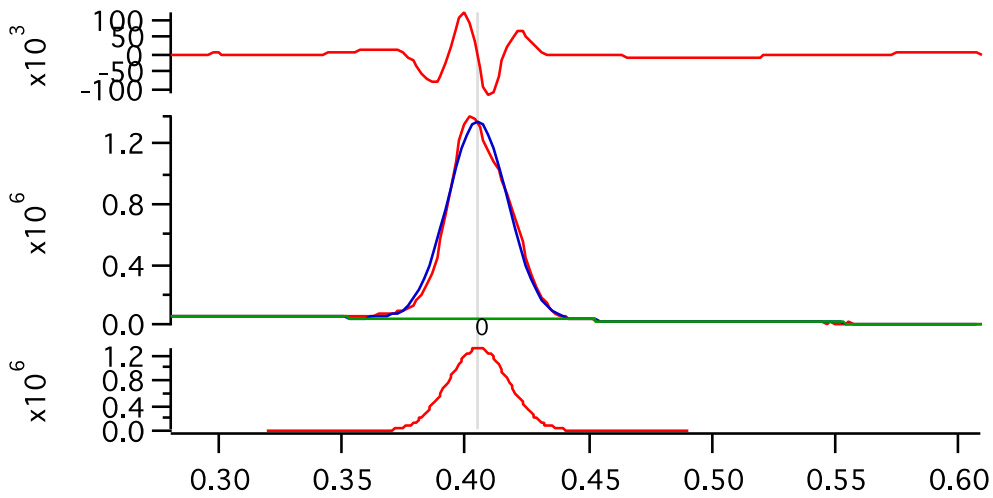
Figure S3. Enlarged GIXD of TIPS-DBC:PCBM blends processed from chloroform: (a) as spun; (b) annealed.

(a) Data fitting for CF processed film:



Location =	0.40345	+/-	0.0001063
Height =	6.7254e+05	+/-	4114.4
Area =	25914	+/-	200.61
FWHM =	0.036199	+/-	0.00027432

(b) Data fitting for CB processed film:



Location =	0.40531	+/-	0.00010874
Height =	1.3109e+06	+/-	10361
Area =	39737	+/-	351.33
FWHM =	0.028477	+/-	0.00026792

Figure S4. Fitting of GIXD of TIPS-DBC:PCBM blends processed from chloroform and chlorobenzene as spun samples.

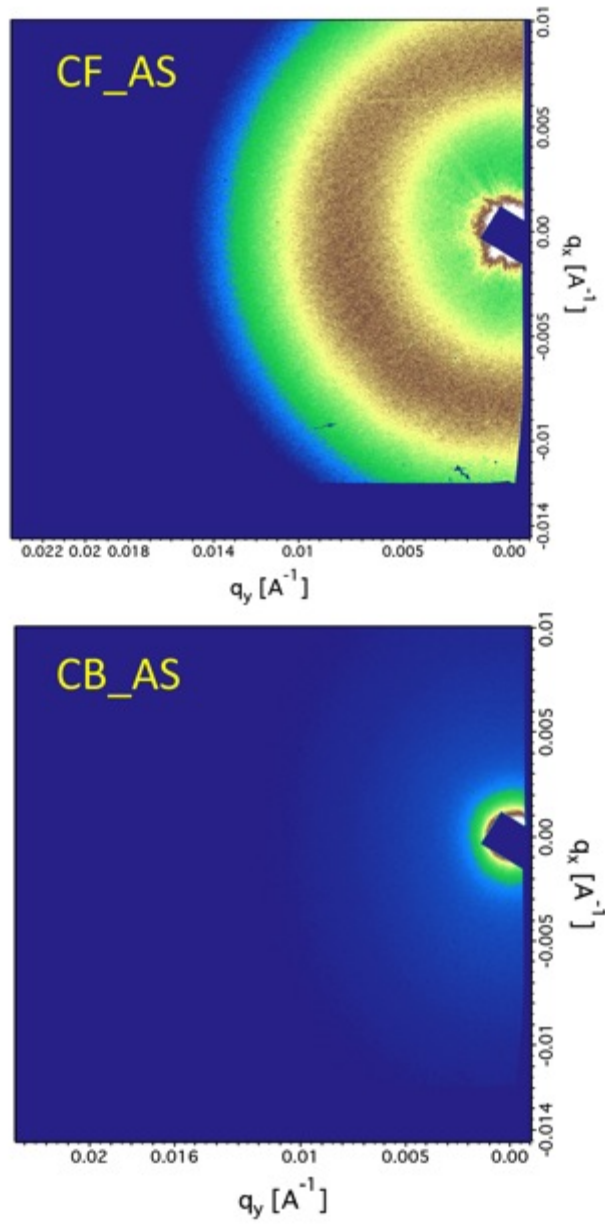


Figure S5. RSoXS scattering images of TIPS-DBC:PCBM blends processed from various conditions.

Table 1. Summary of device performances

	Voc (V)	Jsc (mA/cm²)	FF (%)	PCE (%)
CF-as spun	0.720	-4.25	53.3	1.63
CF-annealed	0.720	-4.65	54.9	1.84
CB-as spun	0.009	-0.60	N.A.	N.A.
CB-annealed	0.002	-0.48	N.A.	N.A.