

## Electronic Supplementary Information

### **Spin-Crossover Metal-Organic Frameworks: Promising Materials for Designing Gas Sensors**

*Carlos Bartual-Murgui,<sup>†,‡</sup> Amal Akou,<sup>†</sup> Christophe Thibault,<sup>‡</sup> Gábor Molnár,<sup>†</sup> Christophe Vieu,<sup>‡</sup> Lionel Salmon,<sup>\*†</sup> and Azzedine Bousseksou<sup>\*†</sup>*

<sup>†</sup> CNRS & Université de Toulouse (UPS, INP), Laboratoire de Chimie de Coordination (LCC), 205 Route de Narbonne, 31077 Toulouse, France.

<sup>‡</sup> CNRS & Université de Toulouse (UPS, INSA, IAES), Laboratoire d'Analyses et d'Architectures des Systèmes (LAAS), 7 Avenue du Colonel Roche, 31077, Toulouse, France.

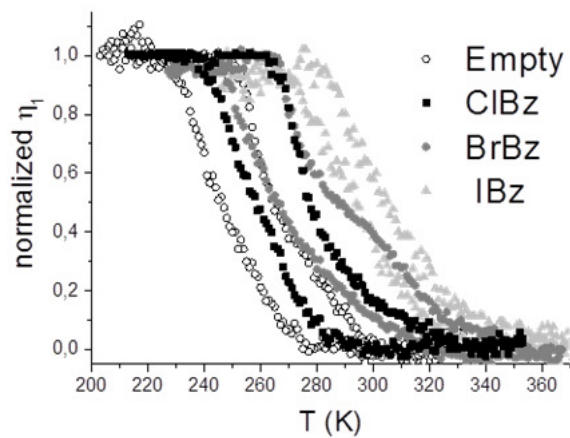


Figure ES11. Normalized temperature dependence of the first-order diffraction efficiency ( $\eta_1$ ) for gratings of **1** before (Empty) and after the absorption of vapors of chlorobenzene (ClBz), bromobenzene (BrBz) and iodobenzene (IBz) recorded both on heating and cooling.

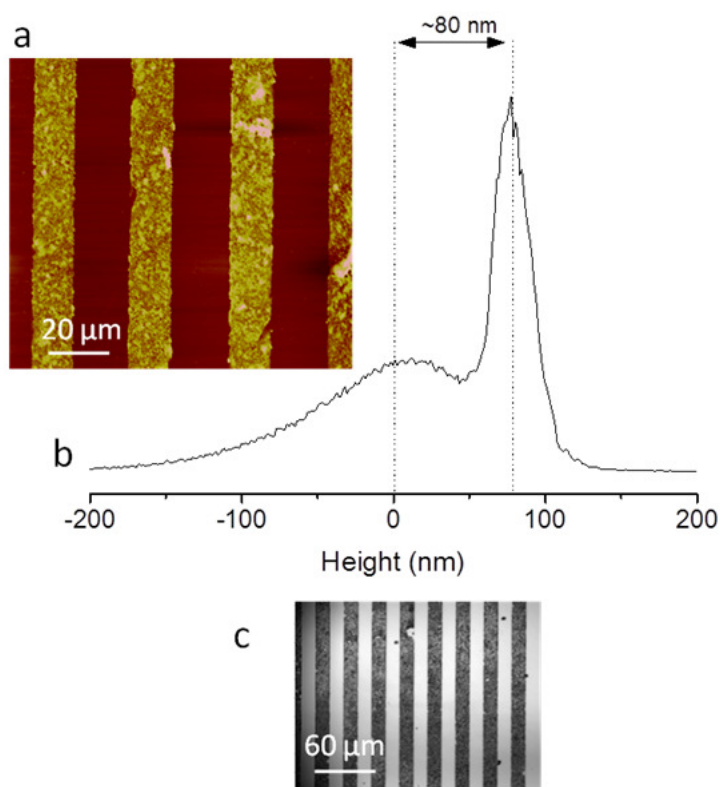


Figure ES12. a) AFM image, b) height distribution histogram and c) bright field optical microscopy image of a surface-relief grating of **1** obtained after 50 deposition cycles (grating period: 30  $\mu\text{m}$ , line width: 15  $\mu\text{m}$ , line thickness: 80 nm).

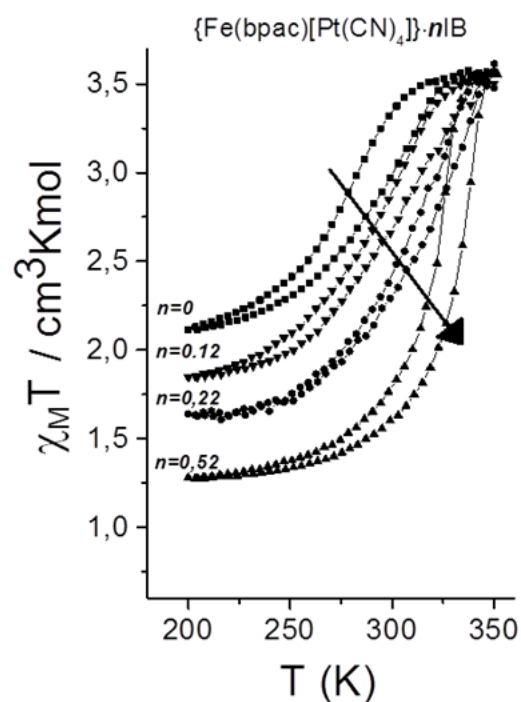


Figure ESI3. Magnetic behavior of a polycrystalline sample of  $\{\text{Fe}(\text{bpac})\text{Pt}(\text{CN})_4\} \cdot n\text{IBz}$  with  $n=0, 0.12, 0.22$  and  $0.52$  recorded in the heating and cooling modes (the black arrow indicates de increasing IBz absorbed fraction). (Note that the molar magnetic susceptibility  $\chi_M$  is higher in the HS state while the refractive index and thus the diffraction efficiency  $\eta_1$  are higher in the LS state (see fig. ESI1).)

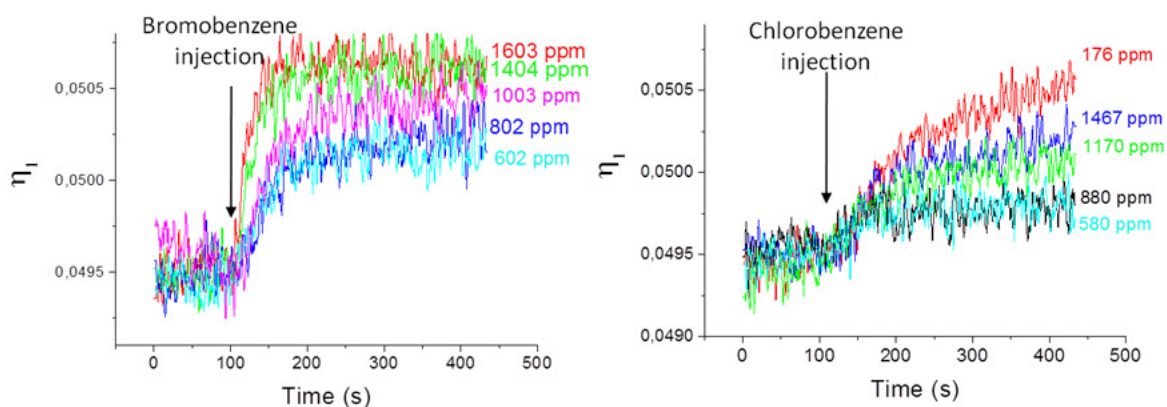


Figure ESI4. Time dependence of  $\eta_1$  under different concentrations of bromobenzene (left) and chlorobenzene (right) at 273 K. The black arrows indicate the moment of vapor injection.

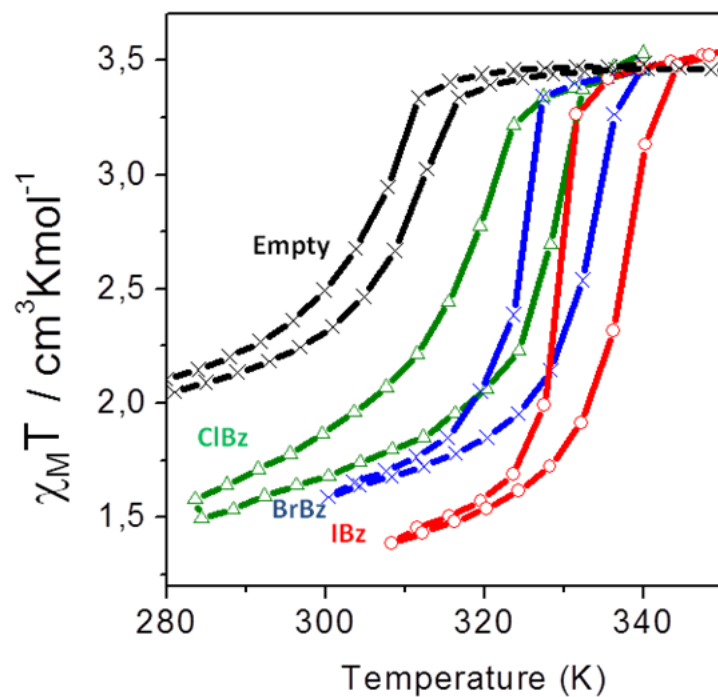


Figure ESI5. Thermal dependence of the  $\chi_M T$  product for a polycrystalline sample of **1** in the heating and cooling modes before and after the absorption of vapors of chlorobenzene (ClBz), bromobenzene (BrBz) and iodobenzene (IBz). (Note that  $\chi_M$  is higher in the HS state while  $\eta_1$  is higher in the LS state (see fig. ESI1)).