

## Supporting Materials for

# Dielectric Properties and Magnetoresistance Behavior of Polyaniline Coated Carbon Fabrics

Bin Qiu,<sup>1,2</sup> Jiang Guo,<sup>1</sup> Yiran Wang,<sup>1</sup> Xin Wei,<sup>3</sup> Qiang Wang,<sup>2</sup> Dezhi Sun,<sup>2\*</sup> Mojammel A. Khan,<sup>4</sup> David P. Young,<sup>4</sup> Ryan O'Connor,<sup>5</sup> Xiaohua Huang,<sup>5</sup> Xin Zhang,<sup>6</sup> Brandon L. Weeks,<sup>6</sup> Suying Wei,<sup>3\*</sup> Zhanhu Guo<sup>1\*</sup>

<sup>1</sup>Integrated Composites Laboratory (ICL)  
Department of Chemical and Biomolecular Engineering  
University of Tennessee, Knoxville, TN 37996 USA

<sup>2</sup>College of Environmental Science and Engineering  
Beijing Forestry University, Beijing, 100083 China

<sup>3</sup>Department of Chemistry and Biochemistry  
Lamar University, Beaumont, TX 77710 USA

<sup>4</sup>Department of Physics and Astronomy  
Louisiana State University, Baton Rouge, LA 70803 USA

<sup>5</sup>Department of Chemistry  
The University of Memphis, Memphis, TN 38152 USA

<sup>6</sup>Department of Chemical Engineering  
Texas Tech University, Lubbock, TX 79409 USA

\*: to whom the correspondence should be addressed

[zguo10@utk.edu](mailto:zguo10@utk.edu) (Z. G.)

[suying.wei@lamar.edu](mailto:suying.wei@lamar.edu) (S. W.)

[sundezhi@bjfu.edu.cn](mailto:sundezhi@bjfu.edu.cn) (D. S.)

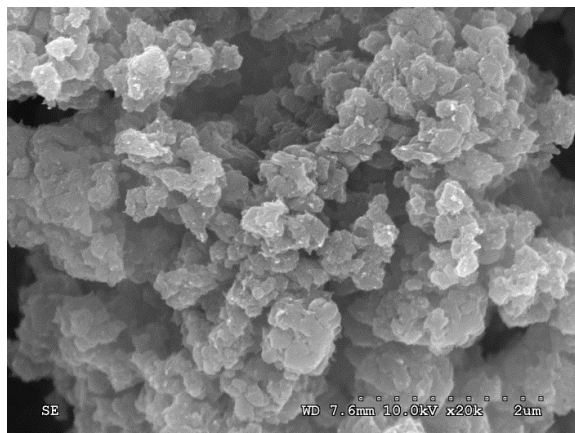


Fig. S1 SEM image of pure PANI.

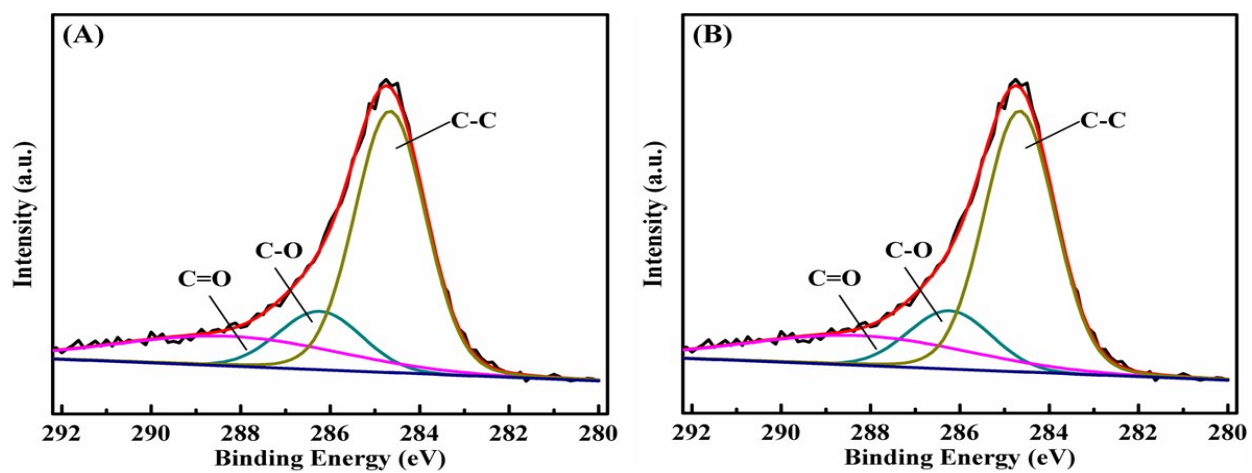
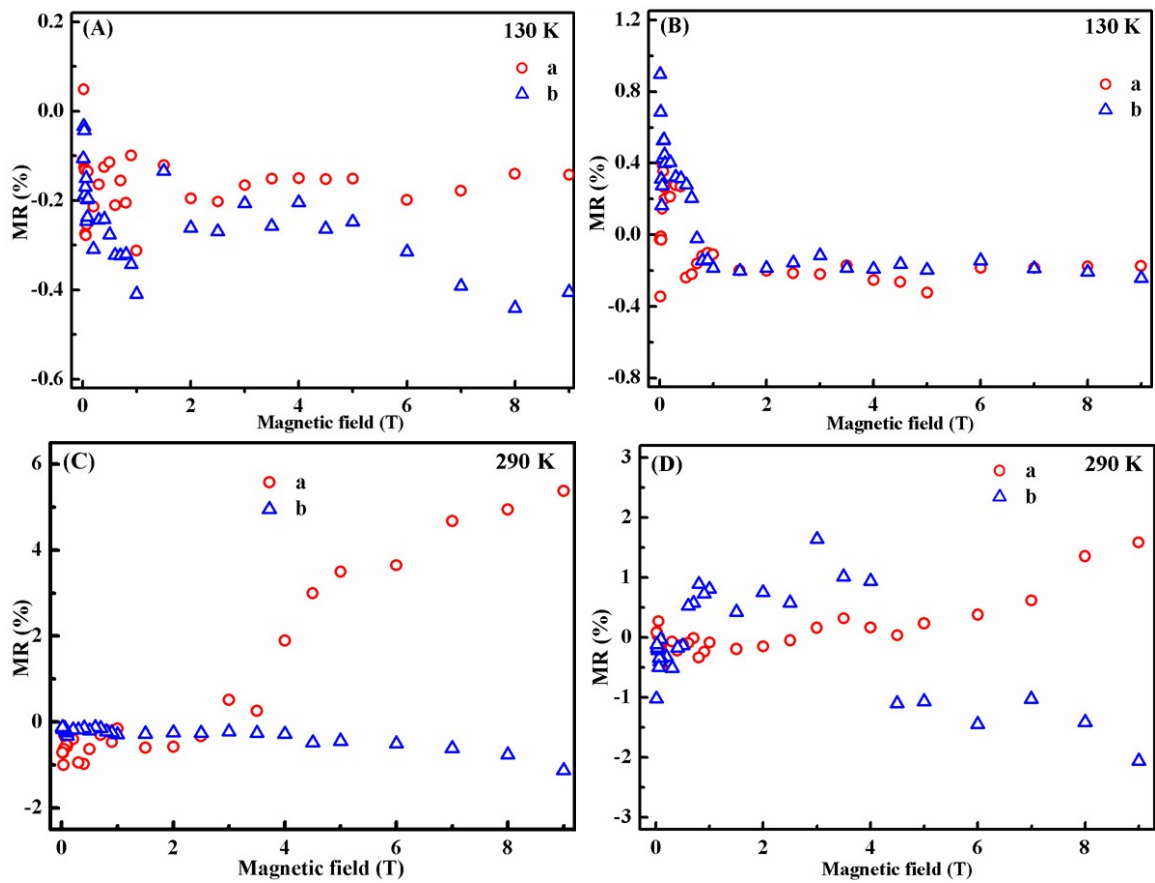


Fig. S2 C1s XPS spectra of the CFs (A) before and (B) after being treated by HNO<sub>3</sub>.



**Fig. S3** MR behavior of the PANI/CFs with (a) 5.0 and (b) 15.0 wt% of PANI loading with (A & C) along vertical direction and (B & D) diagonal direction.