

Electronic Supplementary Information

Mesoporous TiO₂ Films with Regularly Aligned Slit-like Nanovoids

Hirokatsu Miyata,* Yuta Fukushima, Yosuke Kanno, Saeko Hayase, Shintaro Hara, Masatoshi Watanabe, Shin Kitamura, Masahiko Takahashi and Kazuyuki Kuroda*

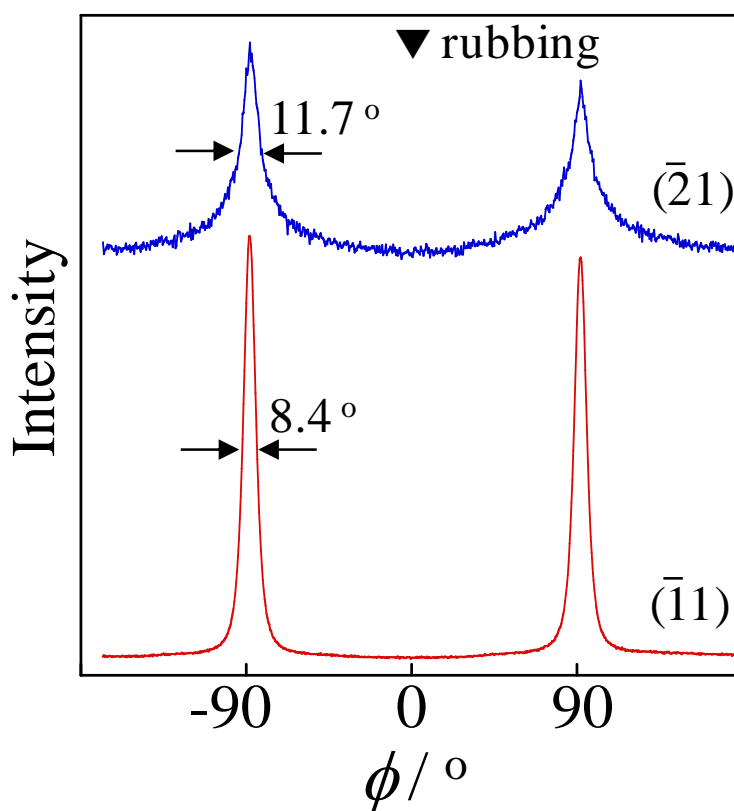


Fig. S1. In-plane rocking curves for $(\bar{2}1)$ and $(\bar{1}1)$ planes recorded for the mesostructured TiO₂ film before calcination.

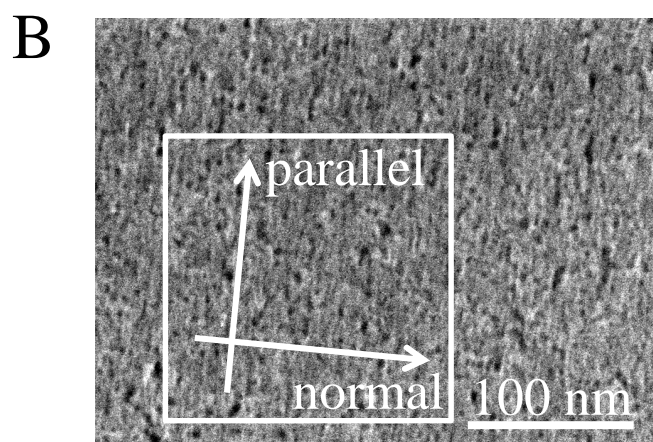
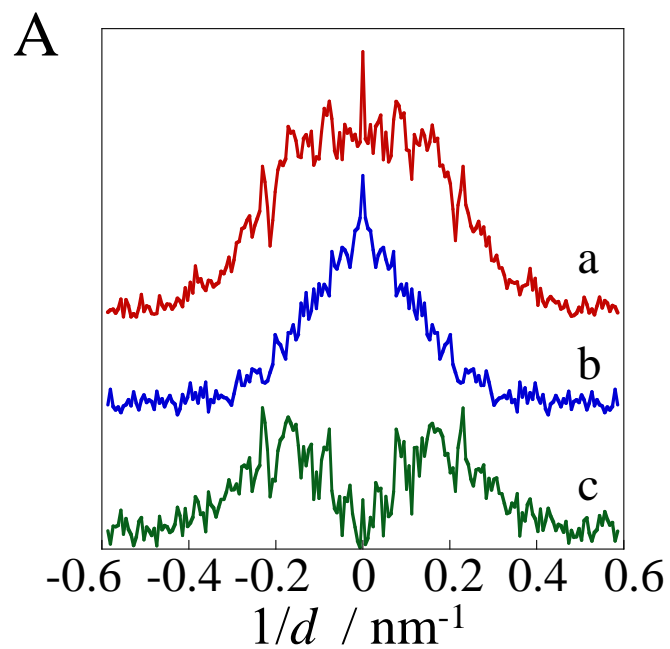


Fig. S2. (A) Line profiles of the FFT image along two directions, normal (trace a) and parallel (trace b) to the alignment direction of the mesopores, and their difference (trace c). (B) FFT is performed for the region within the white square and the two directions are shown by the arrows.

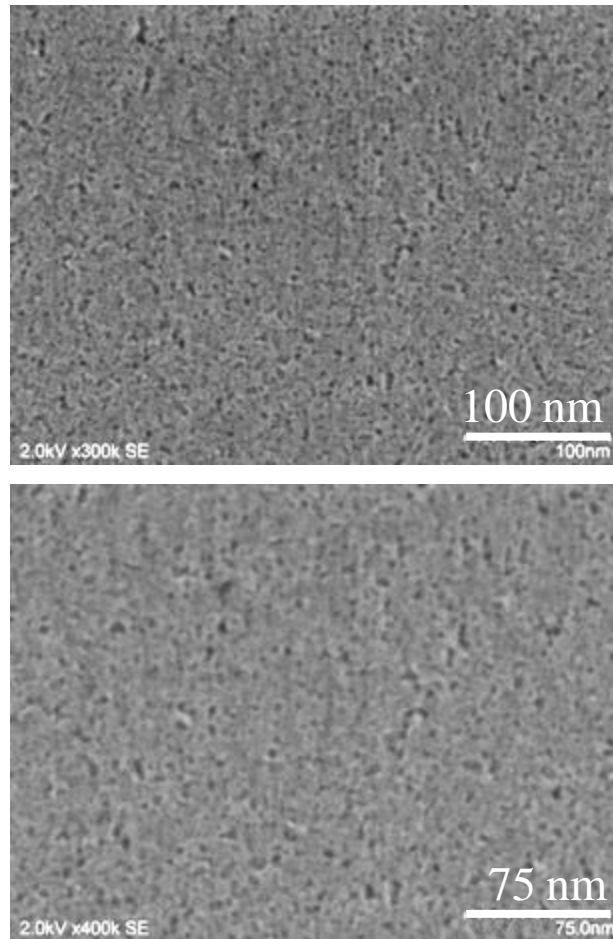


Fig. S3. Top view SEM images of the mesoporous TiO₂ film calcined at 350 °C.